

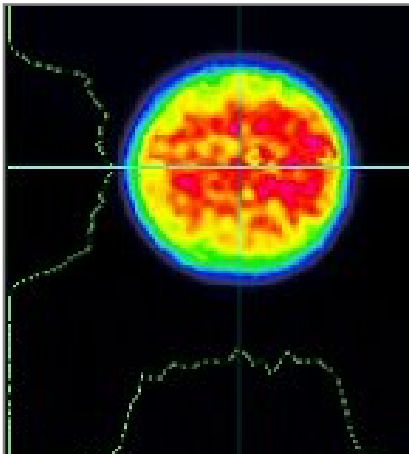
How to make the Big Sky Ultra more flexible?

FOLA – Fibre Optic Launch Adaptor

The **Fibre Optic Launch Adaptor**, or **FOLA**, is a fibre-coupling option for the Big Sky Ultra Nd:YAG laser. The FOLA has been specially developed for applications in harsh environments and it comprises an O-ring sealed, Nitrogen-purged module with factory aligned and fixed optics.

This high performance option is only available with the Big Sky Ultra, a user-friendly and rugged Nd:YAG laser, renowned for its high reliability and suitability for use in industrial environments.

The FOLA takes the output beam of the Ultra and launches it into a detachable, hard clad optical fibre to enable the laser energy to be delivered remotely. In the standard version, the module is delivered with a 3m long, 1mm diameter core (Na 0.22) optical fibre.



Key Features

- *High Performance*
- *Good Beam Homogeneity*
- *Compact & Rugged*
- *Flexibility*

Near field is imaged onto face of fibre

Ultra 



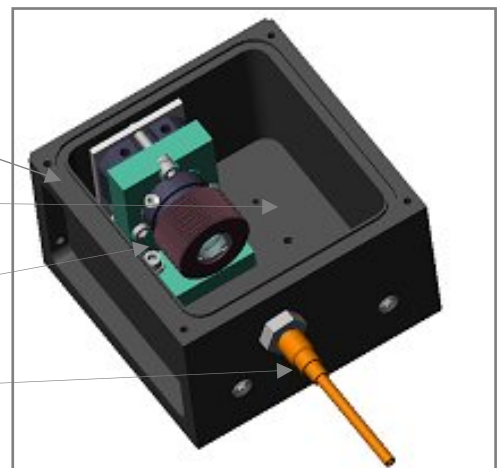
A laser source with optical fibre for remote applications: Ultra FOLA

O-ring sealed module

*Dry Nitrogen purged module to
avoid air break down*

*Optics pre-aligned in factory:
no moving parts*

High power SMA connector



FOLA Module

Specifications for Ultra FOLA	
Wavelength/nm	1064 or 532
Frequency/Hz	20
Output Energy/mJ	45 at 1064nm or 25 at 532nm
Pulse Duration/ns	8
Pulse to pulse energy stability/%rms	2
Numerical aperture	0.22
Dimensions (module only)/mm	76 x 76 x 50
Weight (module only)/kg	0.5

These specifications are subject to change without notice.