

Coaxial Light

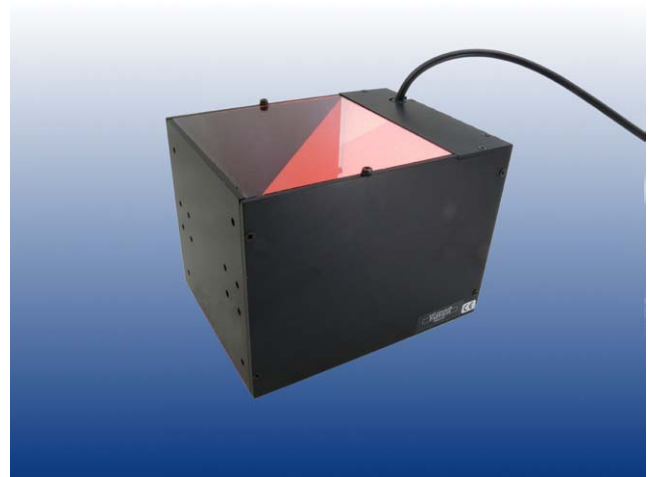
A new series of red (amber, 617 nm) coaxial lights with high intensive LEDs. They have at least 50% more light compared to the well known PAH series.

A coaxial light is used for sharp detection which requires a very even light over the whole area.

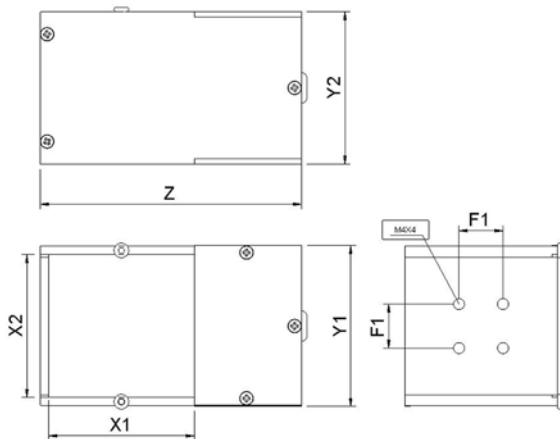
The light has got a protective glass, AR-coated.

Mounting: includes four M4 screws suited for LATAB brackets.

SAH Series



Mechanical dimensions



Specifications

The coaxial light can be used either for steady state or strobe light together with LATAB control units. Supplied with 1 meter cable as standard, longer cable on demand, see section Options.

CE approved and RoHS compliant.

Ordering information

Model	X1/ X2	Y1	Y2	Z	F1	Con- troller *
SAH9 2525	25	33	30,5	70	10	1A/8A
SAH9 5050	50	58	55,5	95	16	1A/8A
SAH9 7575	75	84	80,5	120	16	1A/8A
SAH9 0110	109	117	115	159	16	1A/8A
SAH9 0145	145	153	150	190	16	3A/24A

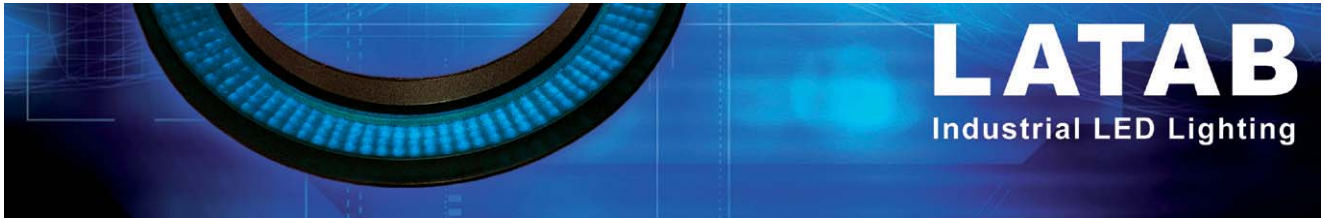
* Steady state / Strobe mode

Options

Customized cable length: e.g. add "2 m" to the article No.

Accessories

Brackets, see section Options



LED Coaxial Light, 25 mm x 25 mm

Coaxial lighting is used to illuminate objects with reflecting or highly reflecting surfaces. The light is generated by a diffuse backlight and deflected by a 50% permeable mirror on the object so that the lighting axis matches exactly to the optical axis of the camera.

This coaxial light has an exchangeable light head in order to use it for different colors.

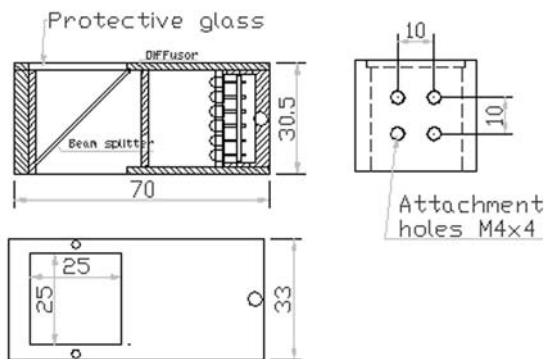
The light head is available in red, blue, green, IR, white and RGB.

The light has a protective glass.

Mounting: Four M4 screws.



Mechanical dimensions



Specifications

The coaxial light can be used either for steady state or strobe light together with LATAB control units. Supplied with 1 meter cable as standard, longer cable on demand, see section Options.

CE approved and RoHS compliant.

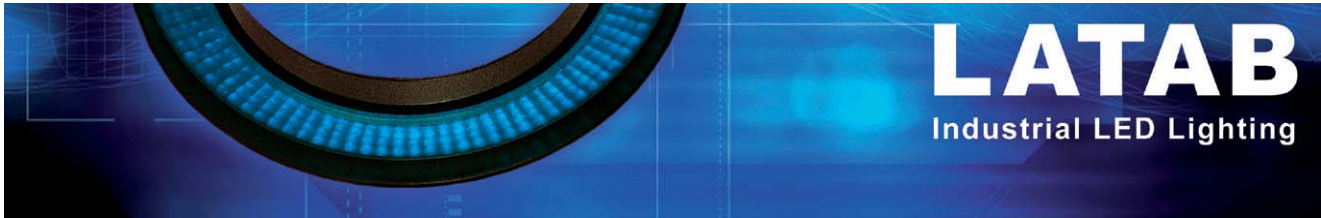
Ordering information

Color	Model	Controller*
Red 630 nm	PAH9 2525	1A/8A
IR 880 nm	PAR9 2525	1A/8A
Green 520 nm	PAG9 2525	1A/8A
Blue 465 nm	PAB9 2525	1A/8A
White	PTW9 2525	1A/8A
RGB	PRB9 2525	4-ch controller

* Steady state / Strobe mode

Options

Customized cable length: e.g. add "2 m" to the article No.



LED Coaxial Light, 50 mm x 50 mm

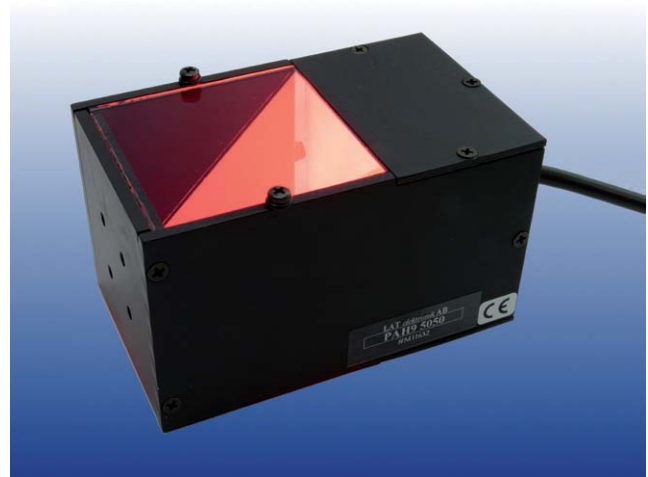
Coaxial lighting is used to illuminate objects with reflecting or highly reflecting surfaces. The light is generated by a diffuse backlight and deflected by a 50% permeable mirror on the object so that the lighting axis matches exactly to the optical axis of the camera.

This coaxial light has an exchangeable light head in order to change color heads.

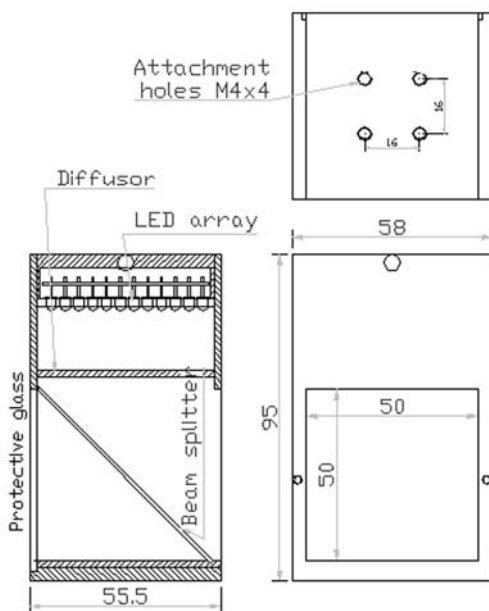
The light head is available in red, blue, green, IR white and RGB.

The light has a protective glass.

Mounting: Four M4 screws.



Mechanical dimensions



Specifications

The coaxial light can be used either for steady state or strobe light together with LATAB control units. Supplied with 1 meter cable as standard, longer cable on demand, see section Options.

CE approved and RoHS compliant.

Ordering information

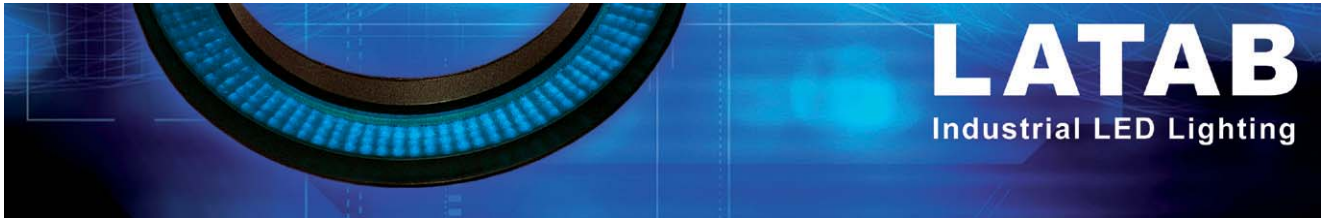
Color	Model	Controller*
Red 630 nm	PAH9 5050	1A/8A
IR 880 nm	PAR9 5050	1A/8A
Green 520 nm	PAG9 5050	1A/8A
Blue 465 nm	PAB9 5050	1A/8A
White	PTW9 5050	1A/8A
RGB	PRB9 5050	4-ch controller

* Steady state / Strobe mode

Options

Brackets, see section Options

Customized cable length: e.g. add "2 m" to the article No.



LED Coaxial Light, 75 mm x 75 mm

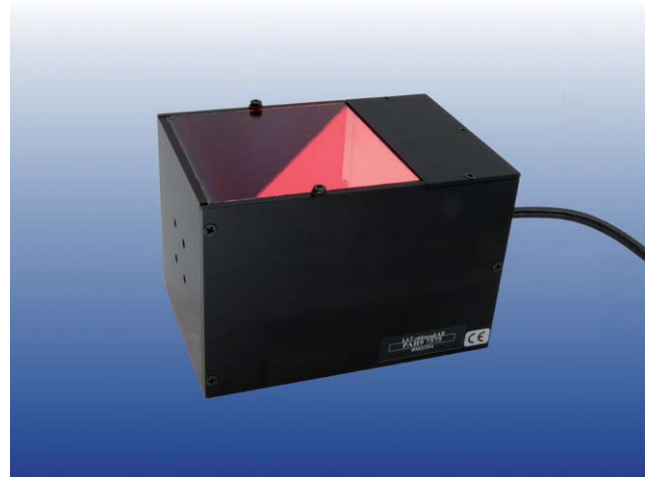
Coaxial lighting is used to illuminate objects with reflecting or highly reflecting surfaces. The light is generated by a diffuse backlight and deflected by a 50% permeable mirror on the object so that the lighting axis matches exactly to the optical axis of the camera.

This coaxial light has an exchangeable light head in order to change color heads.

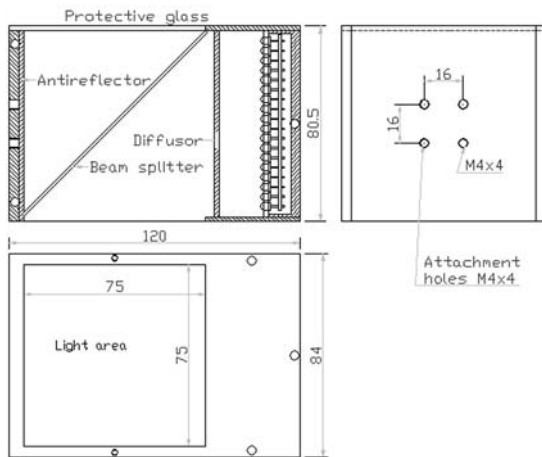
The light head is available in red, blue, green, IR, white and RGB.

The light has a protective glass.

Mounting: Four M4 screws.



Mechanical dimensions



Specifications

The coaxial light can be used either for steady state or strobe light together with LATAB control units. Supplied with 1 meter cable as standard, longer cable on demand, see section Options.

CE approved and RoHS compliant.

Ordering information

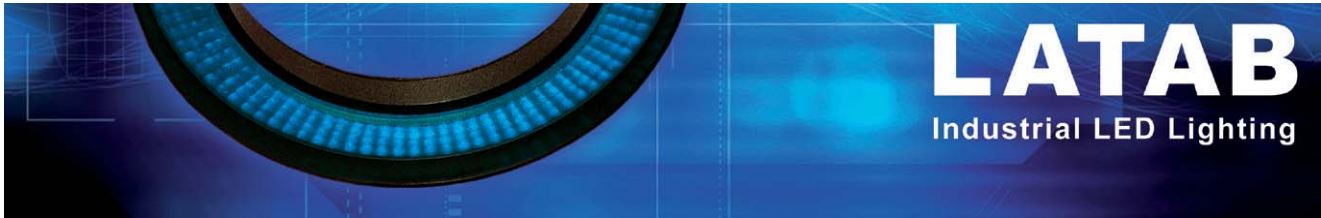
Color	Model	Controller*
Red 630 nm	PAH9 7575	1A/8A
IR 880 nm	PAR9 7575	1A/8A
Green 520 nm	PAG9 7575	1A/8A
Blue 465 nm	PAB9 7575	1A/8A
White	PTW9 7575	1A/8A
RGB	PRB9 7575	4-ch controller

* Steady state / Strobe mode

Options

Brackets, see section Options

Customized cable length: e.g. add "2 m" to the article No.



LED Coaxial Light, 110 mm x 110 mm

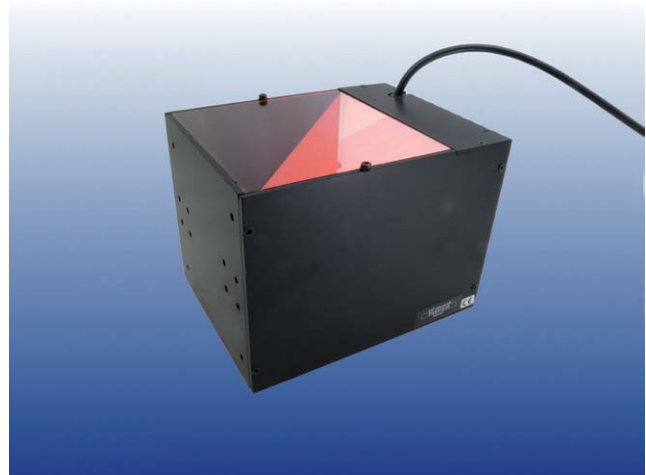
Coaxial lighting is used to illuminate objects with reflecting or highly reflecting surfaces. The light is generated by a diffuse backlight and deflected by a 50% permeable mirror on the object so that the lighting axis matches exactly to the optical axis of the camera.

This coaxial light is based on SMD-LEDs and has an exchangeable light head in order to change color heads.

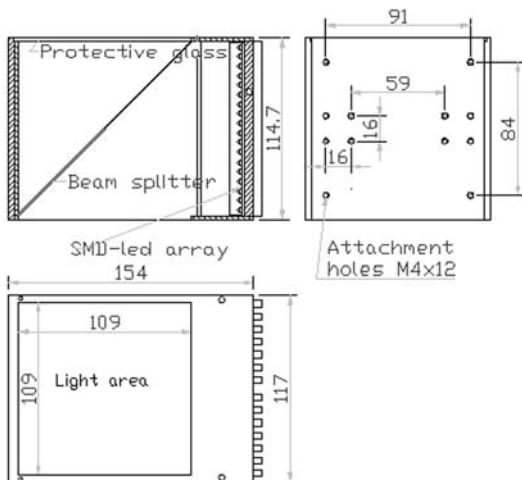
The light head is available in amber, blue, green, IR and white.

The light has a protective glass.

Mounting: Four M4 screws.



Mechanical dimensions



Specifications

The coaxial light can be used either for steady state or strobe light together with LATAB control units. Supplied with 1 meter cable as standard, longer cable on demand, see section Options.

CE approved and RoHS compliant.

Ordering information

Color	Model	Controller*
Amber 617 nm	PAH9 0110	1A/8A
IR 880 nm	PAR9 0110	1A/8A
Green 520 nm	PAG9 0110	1A/8A
Blue 465 nm	PAB9 0110	1A/8A
White	PTW9 0110	1A/8A

* Steady state / Strobe mode

Options

Brackets, see section Options

Customized cable length: e.g. add "2 m" to the article No.

