

Front Light, 80 mm x 56 mm

SAH Series

A new front light with red (amber, 617 nm) high intensive LEDs. They have at least 50% more light compared to the well known PAH series.

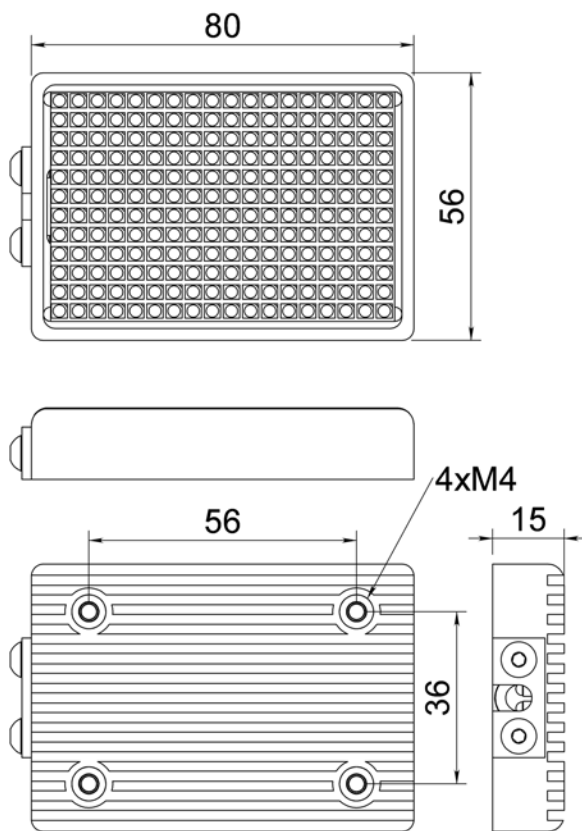
This is a basic light head that will easily suit many applications. The light is housed in black aluminium. The active LED area is 48 mm x 72 mm (34 cm²). Includes four M4 screws for fastening of the light head.

For more evenness of the light, a split diffusor can be used.

N.B.: no bracket included.



Mechanical dimensions



Specifications

The line light can be used either for steady state or strobe light together with LATAB control units. Supplied with 1 meter cable as standard, longer cable on demand, see section Options.

CE approved and RoHS compliant.

Ordering information

Color	Model	Controller*
Amber 617 nm	SAH5 1011	1A/8A

* Steady state / Strobe mode

Options

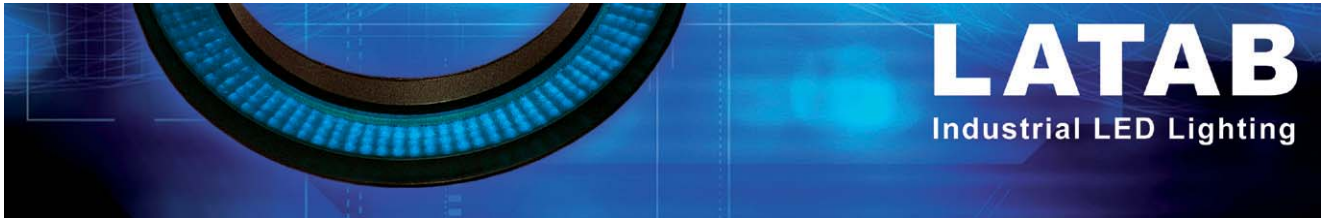
Bracket: LAD3 7217

Customized cable length: e.g. add "2 m" to the article No.

Accessories

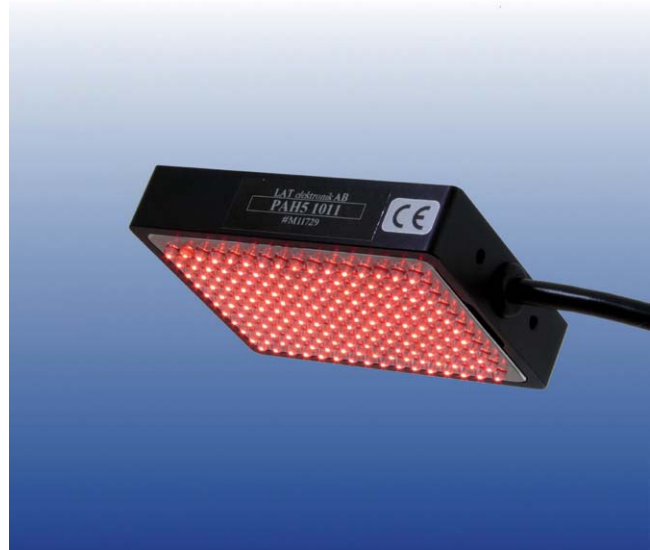
Bracket: LAD3 7217

Split diffusor: ad suffix "S"

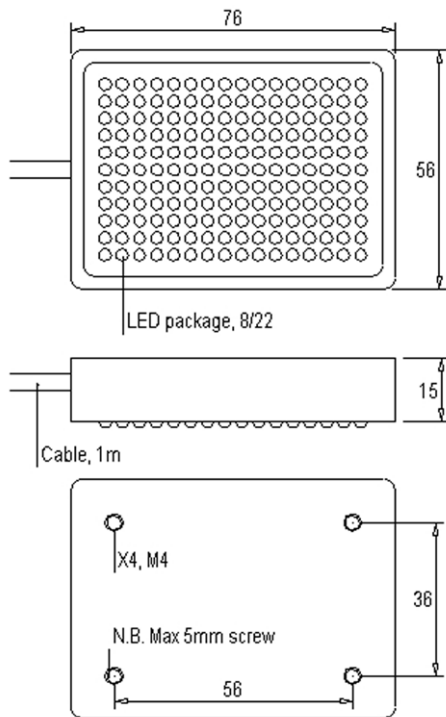


LED Front Light 56 mm x 76 mm

A basic array for a wide range of applications.
 The active LED area is 46 x 66 mm.
 Only four M3 holes for fastening the array.
 This light is housed in black aluminium.



Mechanical dimensions



Specifications

The front light can be used either for steady state or strobe light together with LATAB control units. Supplied with 1 meter cable as standard, longer cable on demand, see section Options. No bracket included. CE approved and RoHS compliant.

Ordering information

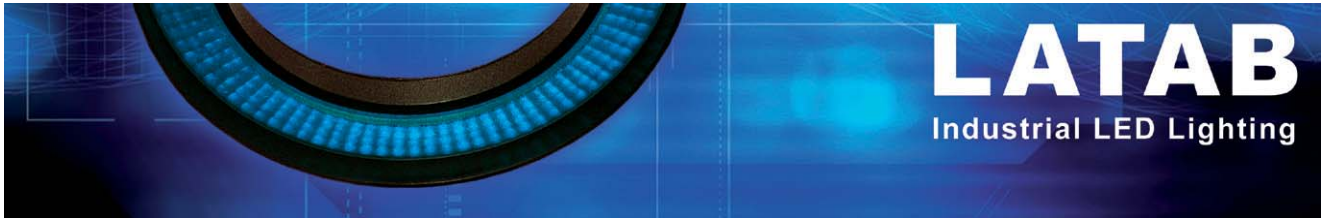
Color	Model	Controller*
Red 630 nm	PAH5 1011	1A/8A
IR 880 nm	PAR5 1011	1A/8A
Green 520 nm	PAG5 1011	1A/8A
Blue 465 nm	PAB5 1011	1A/8A
White	PTW5 1011	1A/8A

* Steady state / Strobe mode

Options

Bracket: LAD3 7217

Customized cable length: e.g. add "2 m" to the article No.



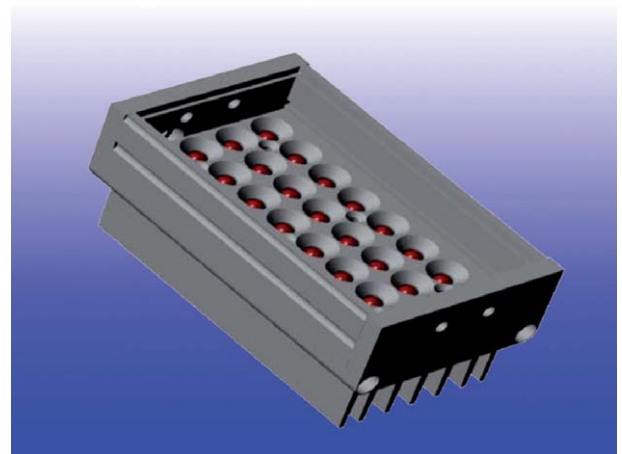
Spot Light 62 mm x 110 mm, Luxeon 3W

A spot light based on Luxeon 3W LEDs, giving 3 times more light as PAH LEDs.

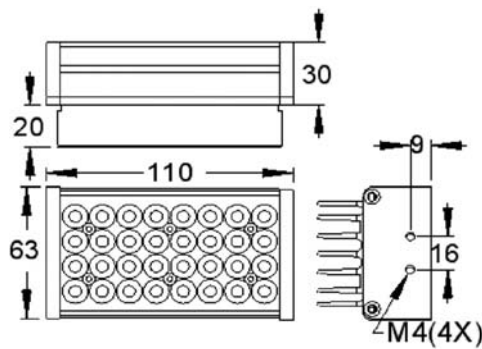
The active LED area is 54 mm x 98 mm (53 cm²). Includes two M4 holes in each end for fastening the light. The light is housed in black aluminium.

No bracket included.

Recommendation:
Use either strobe or long flash without double intensity.



Mechanical dimensions



Specifications

The spot light can be used either for steady state or strobe light together with LATAB control units. Supplied with 1 meter cable as standard, longer cable on demand, see section Options.

CE approved and RoHS compliant.

Ordering information

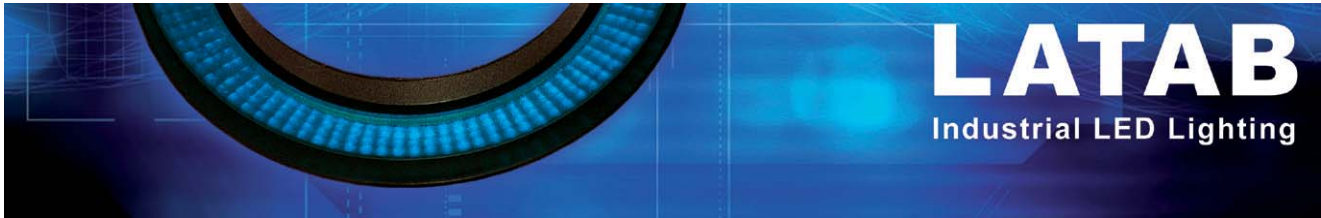
Color	Model	Controller*
Red 630 nm	FAD6 0402	3A/24A
Green 520 nm	FAG6 0402	3A/24A
Blue 465 nm	PAB6 0402	3A/24A
White 5500 K	FTW6 0402	3A/24A

* Steady state / Strobe mode

For bracket dimensions see LAD3 7217 (section Options)

Option

Bracket: LAD3 7217



Front/Back Light, Profile based SAH Series

A new series of red (amber, 617 nm) front lights, with high intensive leds.

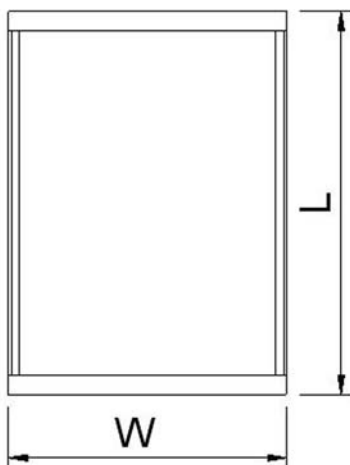
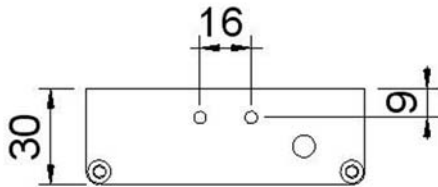
Together with a diffusor, this type can be used as a high intensive back light or a front light with very even light.

The size is from 51 mm x 84 mm to 207 mm x 408 mm. This light family is available in amber, 617 nm.

Very easy to customize applications.
Options: Brackets, Diffusor



Mechanical dimensions



Specifications

The front/back light can be used either for steady state or strobe light together with LATAB control units. Supplied with 1 meter cable as standard, longer cable on demand, see section Options.

CE approved and RoHS compliant.

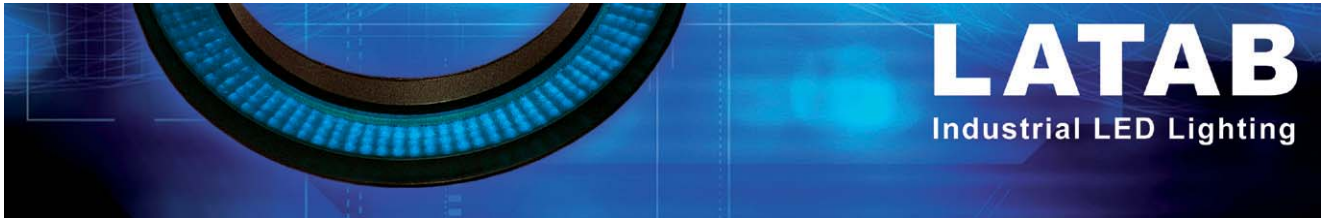
Ordering information

Color	Model	Controller*
Amber 617 nm	SAH7 XXYY	See table

Table on next page:
XX = width, YY= length

Accessories

Split diffusor: add suffix "S"
Brackets, see section Options



Dimension table for SAH7 XXYY

	YY	02	03	04	05	06	07	08	09	10	12	14
	YY mm	84	120	156	192	228	264	300	336	372	444	516
XX	XX mm											
06	51	0602	0603	0604	0605	0606	0607	0608	0609	0610	0612	0614
08	63	0802	0803	0804	0805	0806	0807	0808	0809	0810	0812	0814
10	75	1002	1003	1004	1005	1006	1007	1008	1009	1010	1012	1014
12	87	1202	1203	1204	1205	1206	1207	1208	1209	1210	1212	1214
14	99	1402	1403	1404	1405	1406	1407	1408	1409	1410	1412	1414
16	111	1602	1603	1604	1605	1606	1607	1608	1609	1610	1612	1614
18	123	1802	1803	1804	1805	1806	1807	1808	1809	1810	1812	1814
20	135	2002	2003	2004	2005	2006	2007	2008	2009	2010	2012	2014
22	147			2204	2205	2206	2207	2208	2209	2210	2212	2214
24	159			2404	2405	2406	2407	2408	2409	2410	2412	
26	171			2604	2605	2606	2607	2608	2609	2610		
28	183				2805	2906	2807	2808	2809	2810		
30	195					3006	3007	3008	3009	3010		
32	207					3206	3207	3208	3209			

Requires 1A steady state controller/ 8A strobe control units.

Requires 3A Steady state controller/ 24A strobe control units.

Requires 2 pcs 3A Steady State controller/ 2 pcs 24A strobe control units.

Order example:

For dimension 87 mm x156 mm order SAH7 1204 (see table above)

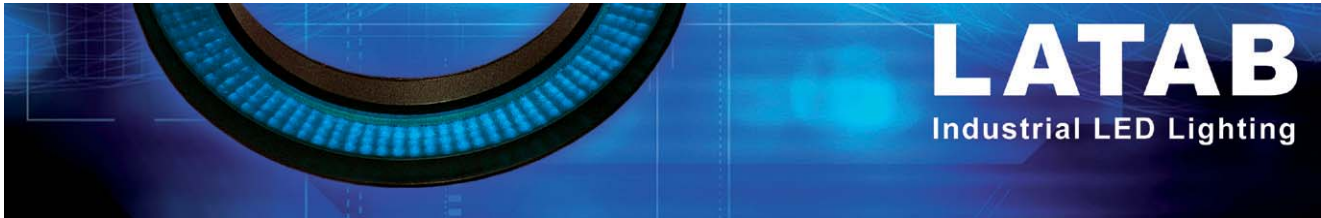
Length and width in mm, outer dimension.

For active light area reduce 12 mm in length and width.

The highth of the profile is 30 mm.

Accessories:

Brackets, see section Option



LED Back Light, Profile based

A back Light based on aluminium-profile system.

The size is from 51 mm x 84 mm to 207 mm x 516 mm.

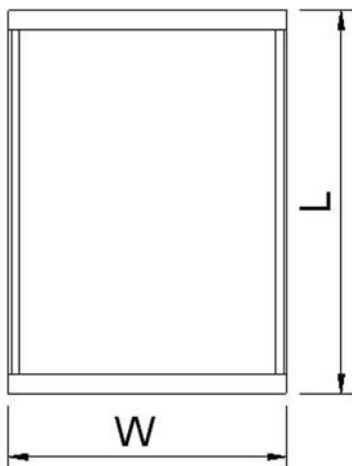
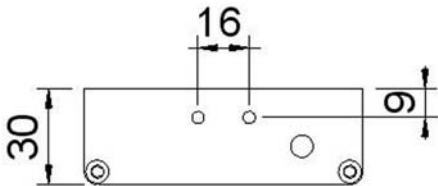
This back light family is available in red (640 nm) and amber (617 nm).

Amber is 2 times more intensive as the red one.

Very easy to customize applications.



Mechanical dimensions



Specifications

Can be used either for steady state or strobe light together with LATAB control units. Supplied with 1 meter cable as standard, longer cable on demand, see section Options.

CE approved and RoHS compliant.

Ordering information

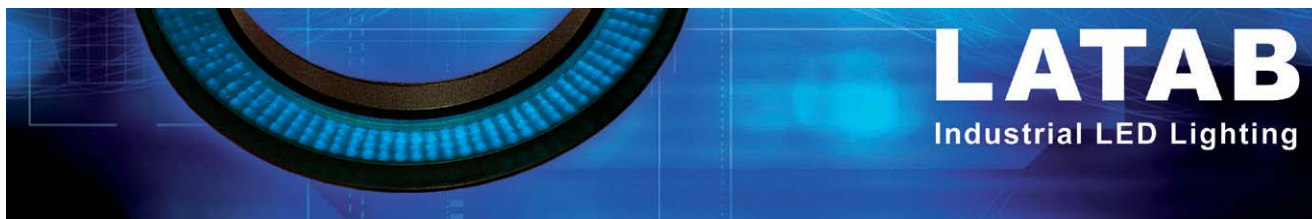
Color	Model	Controller*
Red 640 nm	PAD7 XXYY	See table
Amber 617 nm	TAD7 XXYY	See table
IR 880 nm	PAR7 XXYY	See table
Green 520 nm	PAG7 XXYY	See table
Blue 465 nm	PAB7 XXYY	See table
White	PTW7 XXYY	See table

Table on next page:
ZZ = color, XX = width, YY = length

Options

Brackets, see section Options

Customized cable length: e.g. add "2 m" to the article No.



Dimension Table for PZZ7 XXYY

	YY	02	03	04	05	06	07	08	09	10	11	12	14
	YY mm	84	120	156	192	228	264	300	336	372	408	444	516
XX	XX mm												
06	51	0602	0603	0604	0605	0606	0607	0608	0609	0610	0611	0612	0614
08	63	0802	0803	0804	0805	0806	0807	0808	0809	0810	0811	0812	0814
10	75	1002	1003	1004	1005	1006	1007	1008	1009	1010	1011	1012	1014
12	87	*	1203	1204	1205	1206	1207	1208	1209	1210	1211	1212	1214
14	99	*	1403	1404	1405	1406	1407	1408	1409	1410	1411	1412	1414
16	111	*	1603	1604	1605	1606	1607	1608	1609	1610	1611	1612	1614
18	123	*	*	1804	1805	1806	1807	1808	1809	1810	1811	1812	1814
20	135	*	*	2004	2005	2006	2007	2008	2009	2010	2011	2012	2014
22	147	*	*	2204	2205	2206	2207	2208	2209	2210	2211	2212	2214
24	159	*	*	*	2405	2406	2407	2408	2409	2410	2411	2412	*
26	171	*	*	*	2605	2606	2607	2608	2609	2610	2611	*	*
28	183	*	*	*	2805	2906	2807	2808	2809	2810	*	*	*
30	195	*	*	*	*	3006	3007	3008	3009	3010	*	*	*
32	207	*	*	*	*	3206	3207	3208	3209	*	*	*	*

* On request

Requires 1A steady state controller/ 8A strobe control units for red and IR lights.

Requires 3A steady state controller/ 24A strobe control units for red and IR lights.

Green, blue and white arrays are not available in uneven numbered modules (03, 05, 07 etc).

For controller types for these colors please ask.

Order example:

For a red array 87 mm x 156 mm order PAD7 1204 (see table above)

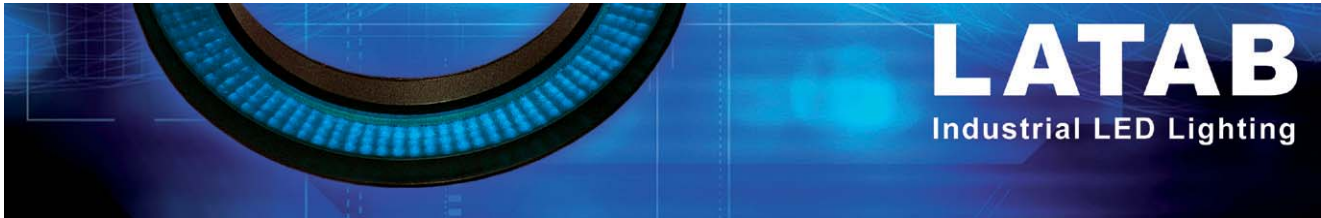
Length and width in mm, outer dimension.

For active light area reduce 12 mm in length and width.

The height of the profile is 32 mm.

Options:

Brackets, see section Option



LED Front Light, Profile based

A family of lights based on aluminium profile.

This profile gives the opportunity to make front lights in dimensions from 23 mm x 108 mm to 171 mm x 540 mm and even bigger on request.

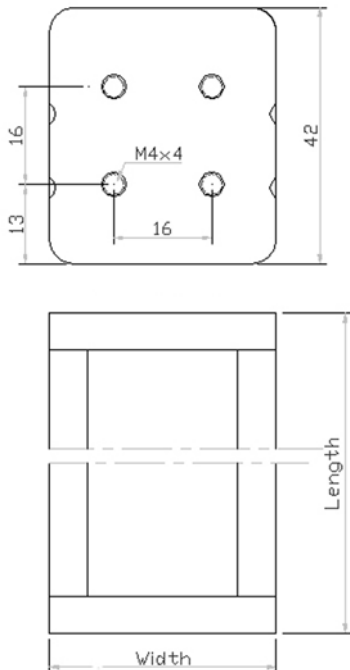
As option front lights can be delivered with a split diffusor in order to achieve a more even light.

The arrays can be delivered with a variety of brackets, even in both ends for better mechanical stability.

The illuminated area is equal to outer area minus 12 mm.



Mechanical dimensions



Specifications

The front light can be used either for steady state or strobe light together with LATAB control units. Supplied with 1 meter cable as standard, longer cable on demand, see section Options.

CE approved and RoHS compliant.

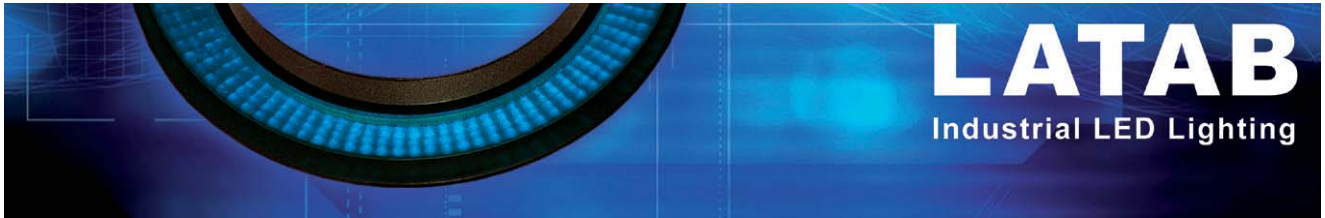
Ordering information

Color	Model	Controller*
Red 630 nm	PAH6 XXYY	See table
IR 880 nm	PAR6 XXYY	See table
Green 520 nm	PAG6 XXYY	See table
Blue 465 nm	PAB6 XXYY	See table
White	PTW6 XXYY	See table

Table on next page:
ZZ = color, XX = width, YY = length

Options

For split diffusor add "S" to the article No.
For brackets, see section Options
Customized cable length: e.g. add "2 m" to the article No.



Dimension Table for PZZ6 XXYY

	YY	04	05	06	07	08	10	12	14	16	18	20	22
	YY mm	108	132	156	180	204	252	300	348	396	444	492	540
XX	XX mm	No	No	No	No	No	No	No	No	No	No	No	No
03	23	0304	0305	0306	0307	0308	0310	0312	0314	0316	0318	0320	0322
04	27	0404	0405	0406	0407	0408	0410	0412	0414	0416	0418	0420	0422
05	31	0504	0505	0506	0507	0508	0510	0512	0514	0516	0518	0520	0522
06	35	0604	0605	0606	0607	0608	0610	0612	0614	0616	0618	0620	0622
07	39	0704	0705	0706	0707	0708	0710	0712	0714	0716	0718	0720	0722
08	43	0804	0805	0806	0807	0808	0810	0812	0814	0816	0818	0820	0822
09	47	0904	0905	0906	0907	0908	0910	0912	0914	0916	0918	0920	0922
10	51	1004	1005	1006	1007	1008	1010	1012	1014	1016	1018	1020	1022
11	55	1104	1105	1106	1107	1108	1110	1112	1114	1116	1118	1120	1122
12	59	1204	1205	1206	1207	1208	1210	1212	1214	1216	1218	1220	1222
13	63	1304	1305	1306	1307	1308	1310	1312	1314	1316	1318	1320	1322
14	67	1404	1405	1406	1407	1408	1410	1412	1414	1416	1418	1420	1422
15	71	1504	1505	1506	1507	1508	1510	1512	1514	1516	1518	*	*
16	75	1604	1605	1606	1607	1608	1610	1612	1614	1616	*	*	*
17	79	1704	1705	1706	1707	1708	1710	1712	1714	1716	*	*	*
18	83	1804	1805	1806	1807	1808	1810	1812	1814	1816	*	*	*
19	87	1904	1905	1906	1907	1908	1910	1912	1914	*	*	*	*
20	91	2004	2005	2006	2007	2008	2010	2012	2014	*	*	*	*
22	99	2204	2205	2206	2207	2208	2210	2212	*	*	*	*	*
24	107	2404	2405	2406	2407	2408	2410	2412	*	*	*	*	*
26	115	*	2605	2606	2607	2608	2610	*	*	*	*	*	*
28	123	*	2805	2806	2807	2808	2810	*	*	*	*	*	*
30	131	*	3005	3006	3007	3008	3010	*	*	*	*	*	*
35	151	*	*	3506	3507	3508	3510	*	*	*	*	*	*
40	171	*	*	*	4007	4008	4010	*	*	*	*	*	*

* On request

Requires 1A steady state controller/ 8A strobe control units for red and IR lights.

Requires 3A steady state controller/ 24A strobe control units for red and IR lights.

Green, blue and white arrays are not available in uneven numbered modules (05,07,09 etc).

For controller types for these colors please ask.

Order example:

For a red array 43 x 156 mm order PAH6 0806 (see table above)

+ split diffusors and brackets if needed.

One module consists of 6 LEDs (24mm)

Length and width in mm, outer dimension.

For active light area reduce 12 mm in length and width.

The height of the profile is 42 mm.