



Complete Vision Solutions

Smart Reader M6A

Powerful Embedded Complete Vision System

NEW Dual Head M6A Analyzer



Powerful Embedded Technology



M6A Embedded Analyzer for Giga Ethernet, Camera Link, LVDS digital cameras

FEATURES

- Stand alone complete vision system
- Fully IP addressable
- Giga Ethernet interface
- Support for:
Giga Ethernet, Camera Link and LVDS Heads
- Up to 2 digital cameras
- Optimized vision library
- Open system to port your own C application
- Intuitive graphical development environment
- New Generation FPGA on board

Typical Applications

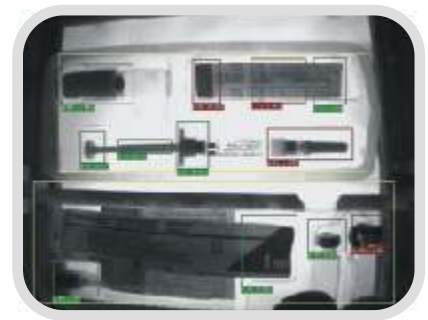
OCR/OCV



Inspection



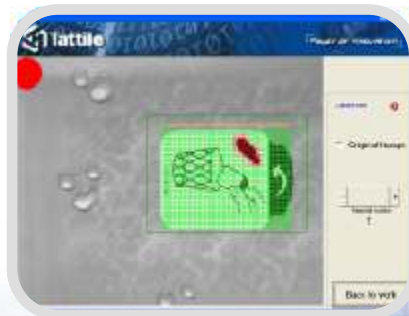
Blob Analysis



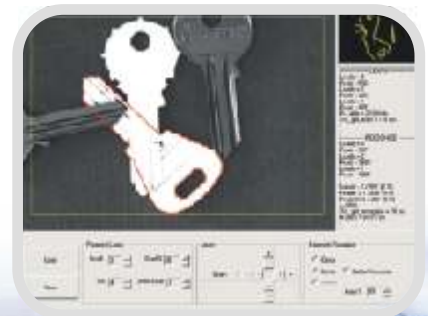
Color Analysis



Surface Inspections



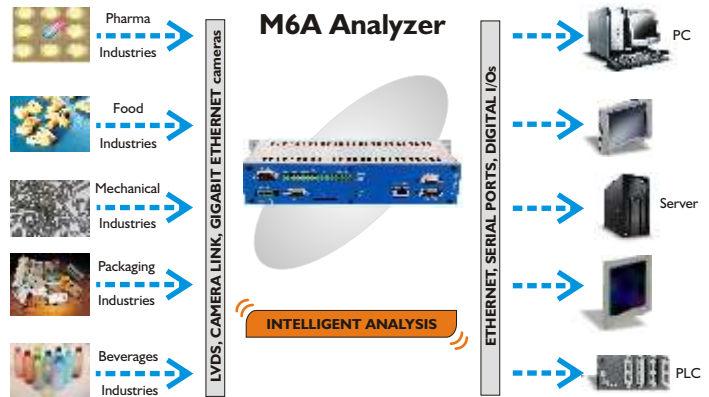
Pattern Recognition



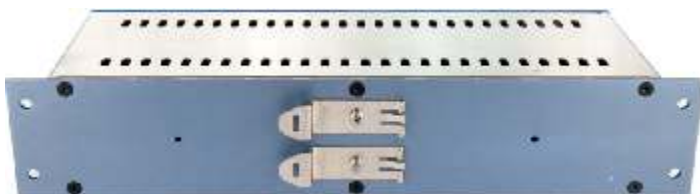
Smart Reader M6A

Powerful Embedded Complete Vision System

POWERFUL SMART READER



SOFTWARE FEATURES	
OPERATING SYSTEM	
Proprietary Tattile O.S.	Multitask Operating System for custom application
PROGRAMMING LANGUAGES	
Antares Explorer	Intuitive graphical development environment with optimized vision library
ANSI C	Standard C environment
ARM Assembler	ARM Assembler environment
COMMUNICATION	
Firmware Update	Updatable via Ethernet or Serial Ports
Data Exchange	TCP/IP, UDP/IP, RS232 or RS485
CUSTOMIZING TOOLS	
Custom Tool	Ability to add custom C functions to the standard Antares development environment with direct access to TIL (Tattile Image Libraries)
Custom Program	You can write a complete new C application program
Software Porting	Software team to support the porting of your new or existing applications



Designed with DIN rails support for a fast and standard installation

TECHNICAL FEATURES	
SYSTEM	
Microprocessor	Intel® XScale® 80200 @ 800 MHz.
Main Memory	SDRAM – 128 MB
System Flash	16 MB
FPGA	Altera Stratix II – 60k logic elements
Auxiliary Memory	DDRAM II – 256 MB
Mass Memory	SD Interface, up to 8 GB memory support
Synchronization	External trigger without delay
Software	Antares engine, PQC – Print Quality Control or custom C program
DIGITAL CAMERA	
Input Camera	2 x LVDS standard ports or 2 x CameraLink camera standard port 1 x Giga Ethernet camera port
DIGITAL I/O	
Input	6 x fast digital inputs @ 24 Vdc or 3 x fast digital inputs with 1 encoder Line Drive
Output	8 PNP digital outputs @ 24 Vdc 2 x dedicated strobo outputs
COMMUNICATION	
Ethernet Port	10/100/1000 Mbit/s, Network Interface
RS 232 Port	1 line baud rate 1200:115200
RS 485 Port	1 line half duplex baud rate 1200:115200
ENVIRONMENTAL	
Operating Temp.	-10° to 50° C
Operating Humid.	10 to 90% non cond.
Storage Temp.	-20° to 65° C
Storage Humidity	10 to 90% non cond.
Power Supply	24 Vdc ± 10% 7W @ 24 Vdc
Package body	Anodized aluminum ad Stainless Steel
Size / Weight	270 x 50 x 111 mm (L x H x W)
Protection level	IP 42

Distribution in the UK