

PE-I-USB

10 fJ - 20 nJ, Integrated USB Module



KEY FEATURES

1 Integrated USB Module

Plug the device directly to your PC, no need for an additional PC-Interface

2 Powered by your PC

No external wiring needed

3 Software Application Included

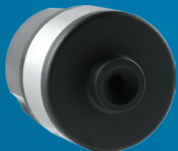
Take full control of your instrument with our unique software:

- Live display in J and J/cm²
- Set Range and Trigger Level
- Measure and Display Energy and Full Statistics
- Display Data in Strip Chart or Histogram
- Log Data to a File
- Dual Channel Software Available

4 2 Sizes Available

- PE5I-Si-USB: 5 mm Ø Silicon sensor
- PE10I-Si-USB: 10 mm Ø Silicon sensor

AVAILABLE MODELS



PE5I-Si-USB
(5 mm-Silicon)

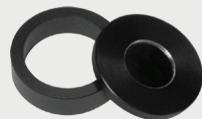


PE10I-Si-USB
(10 mm-Silicon)

ACCESSORIES



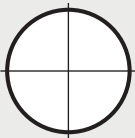
Stand with Delrin Post



Removable IR Windows
(Various types available)



Fiber Adaptors & Connectors
(FC, SC, ST and SMA)



IR Alignment Aide
and Crosshairs



Pelican Carrying Case

SEE ALSO

TECHNICAL DRAWINGS

126

PE-I-USB

SPECIFICATIONS



Approved or in the process of being approved*

| MODELS | PE5I-Si-USB | PE10I-Si-USB |
|--------------------|------------------|-------------------|
| MAX ENERGY | 20 nJ | 20 nJ |
| EFFECTIVE APERTURE | 5 mm \emptyset | 10 mm \emptyset |
| INTEGRATED MODULE | Digital (USB) | Digital (USB) |

MEASUREMENT CAPABILITY

| | PE5I-Si-USB | PE10I-Si-USB |
|-------------------------|-------------------------|-------------------------|
| Spectral Range | 0.2 - 1.1 μm | 0.2 - 1.1 μm |
| Max Measurable Energy | 20 nJ | 20 nJ |
| Noise Equivalent Energy | 10 fJ | 10 fJ |
| Rise Time (0-100%) | 23 μs | 23 μs |
| Max Repetition Rate | 1000 Hz | 1000 Hz |
| Max Pulse Width | 15 ms | 15 ms |
| Peak Sensitivity | 1 GV/J | 1 GV/J |
| Calibration Uncertainty | $\pm 5\%$ | $\pm 5\%$ |

DAMAGE THRESHOLDS

| | PE5I-Si-USB | PE10I-Si-USB |
|-----------------------|-----------------------------|-----------------------------|
| Max Energy Density | 5 $\mu\text{J}/\text{cm}^2$ | 5 $\mu\text{J}/\text{cm}^2$ |
| Max Avg Power Density | 1 mW/cm^2 | 1 mW/cm^2 |

PHYSICAL CHARACTERISTICS

| | PE5I-Si-USB | PE10I-Si-USB |
|--------------------|-----------------------------|-----------------------------|
| Effective Aperture | 5 mm \emptyset | 5 mm \emptyset |
| Sensor | Silicon | Silicon |
| Analog Output | 0-2 V | 0-2 V |
| Dimensions | 81.3 \emptyset X 94.0D mm | 81.3 \emptyset X 94.0D mm |
| Weight | 500 g | 500 g |

ORDERING INFORMATION

| | PE5I-Si-USB | PE10I-Si-USB |
|-------------------|-------------|--------------|
| Full Product Name | PE5I-Si-USB | PE10I-Si-USB |
| Product Number | 201732 | 201731 |

Specifications are subject to change without notice

* For details, contact your Gentec-EO representative