

# PH

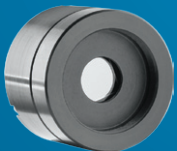
600 pW to 750 mW, Si and Ge Sensors



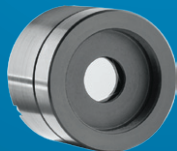
## KEY FEATURES

- 1 Large Apertures**  
11.28 mm Ø for the Silicon sensors
- 2 3 Versions**
  - Silicon: 300 - 1100 nm, up to 750 mW
  - Silicon-UV: 200 - 900 nm, up to 30 mW
  - Germanium: 800 - 1650 nm, up to 500 mW
- 3 Choice of Attenuators**
  - OD1: 10 % Transmission
  - OD2: 1 % Transmission
- 4 Precise Calibration**  
Wavelength selection in 1 nm steps
- 5 Smart Interface**  
Containing all the calibration data

## AVAILABLE MODELS



PH100-Si  
(11.28 mm - Silicon)

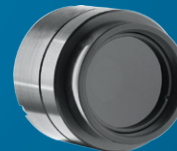


PH100-Si<sup>UV</sup>  
(11.28 mm - UV-Silicon)



PH20-Ge  
(5 mm - Germanium)

## OD1 / OD2 ATTENUATORS



PH Series Detector  
With OD1/OD2 Attenuator

OD1/OD2 Attenuators sold in option. When bought together, the detector is calibrated with and without the attenuator.

## ACCESSORIES



Stand with Delrin Post



Fiber Adaptors & Connectors  
(FC, SC, ST and SMA)



Pelican Carrying Case

## SEE ALSO

CALIBRATION	6
TECHNICAL DRAWINGS	126
COMPATIBLE MONITORS	
MAESTRO	18
UNO	24
P-LINK	28

MONITORS  
ENERGY DETECTORS  
POWER DETECTORS  
OPTICAL DETECTORS  
THZ DETECTORS  
OEM DETECTORS  
CALORIMETERS  
DIFFRACTIVE OPTICS  
BEAM DIAGNOSTICS

PH

## SPECIFICATIONS



\*Also traceable to NRC-CNRC

MODELS	PH100-Si	PH-100Si <sup>UV</sup>	PH20-Ge
<b>MAX AVERAGE POWER (ALONE / WITH OD2)</b>	30 mW / 750 mW	2.8 mW / 30 mW	30 mW / 500 mW
<b>EFFECTIVE APERTURE</b>	11.28 mm Ø	11.28 mm Ø	5 mm Ø

**MEASUREMENT CAPABILITY**

Spectral Range	300 – 1100 nm	200 – 900 nm	800 – 1650 nm
With OD1	400 – 1100 nm	400 – 900 nm	900 – 1650 nm
With OD2	630 – 1100 nm	630 – 900 nm	950 – 1650 nm
Maximum Measurable Power	30 mW @ 1064 nm	2.8 mW @ 532 nm	30 mW @ 1064 nm
With OD1	300 mW @ 1064 nm	25 mW @ 532 nm	300 mW @ 1064 nm
With OD2	750 mW @ 1064 nm	30 mW @ 850 nm	500 mW @ 1064 nm
Minimum Measurable Power <sup>a</sup>	600 pW @ 980 nm	600 pW @ 850 nm	2 nW @ 1550 nm
With OD1	6 nW @ 980 nm	6 nW @ 850 nm	20 nW @ 1550 nm
With OD2	60 nW @ 980 nm	60 nW @ 850 nm	200 nW @ 1550 nm
Rise Time (nominal)	0.2 sec	0.2 sec	0.2 sec
Peak Sensitivity	0.5 A/W	0.45 A/W	0.98 A/W
Calibration Uncertainty	±6.5 % 300 - 399 nm ±2.5 % 400 - 999 nm ±5 % 1000 - 1049 nm ±7 % 1050 - 1100 nm	±8 % 200 - 219 nm ±6.5 % 220 - 399 nm ±2.5 % 400 - 900 nm -	±3.5 % 800 - 1650 nm - -
Accuracy (with OD filters)	±5 %	±5 %	±5 %

**DAMAGE THRESHOLDS**

Maximum Average Power Density	100 W/cm <sup>2</sup>	100 W/cm <sup>2</sup>	100 W/cm <sup>2</sup>
Saturation Level	30 mW/cm <sup>2</sup> @ 1064 nm	55 mW/cm <sup>2</sup> @ 532 nm	320 mW/cm <sup>2</sup> @ 1064 nm

**PHYSICAL CHARACTERISTICS**

Effective Aperture Diameter	11.28 mm Ø	11.28 mm Ø	5 mm Ø
Dimensions	36Ø x 26.5D mm	36Ø x 26.5D mm	36Ø x 26.5D mm
Weight (head only)	130 g	130 g	130 g

**ORDERING INFORMATION**

Full Product Name	PH100-Si	PH100-Si <sup>UV</sup>	PH20-Ge
Product Number	200878	200879	200866
Full Product Name	PH100-Si-OD1	PD100-Si <sup>UV</sup> -OD1	PH20-Ge-OD1
Product Number	200880	200881	200874
Full Product Name	PH100-Si-OD2	PH100-Si <sup>UV</sup> -OD2	PH20-Ge-OD2
Product Number	200882	200883	200875

a. Half hour warm-up before offset nulling. Offset nulling on the lowest scale after each new power supply. Temperature ± 0.5 °.

Specifications are subject to change without notice