

MAIN FEATURES

NEW M12 Viewer



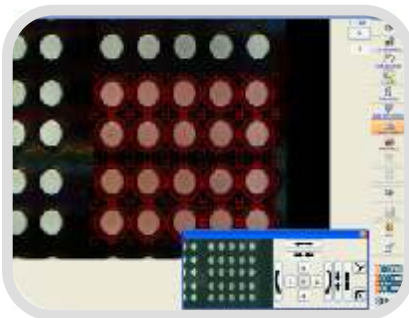
- Intel ATOM 1.6 Ghz. Processor
- Antares 4.02
- HMI intuitive and easy to use
- Windows XP embedded, linux or RTOS
- SensorFox Digital I/O management
- Multi Giga Ethernet and 4 LVDS Heads
- Advance PLC - Programmable logic controller
- Optimized Hardware vision library - HTIL
- Open system to port your own C and C++ Application

NEW M12 Analyzer

M12 Embedded Analyzer
for Giga Ethernet and LVDS digital cameras

Typical Applications

Pharma Control



Guida Robot



Packaging Control



Color & Fluid Analysis



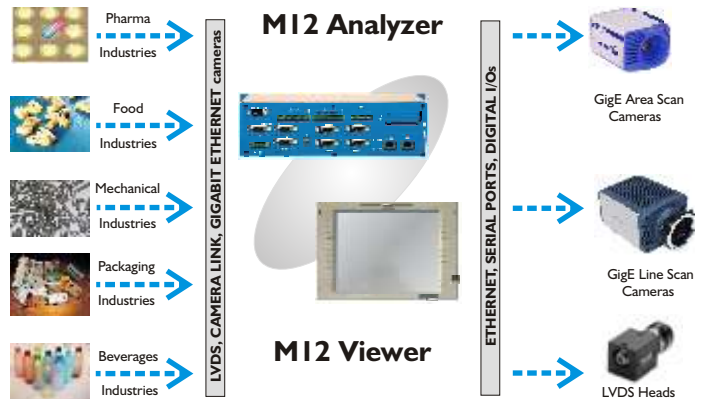
Food Control



Industrial Inspection

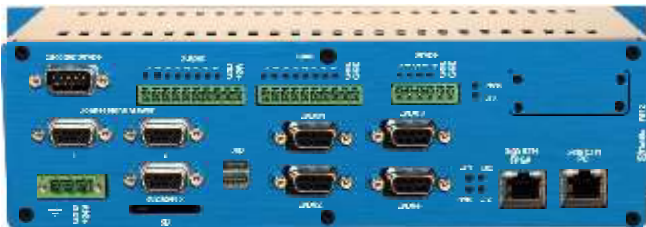


POWERFUL SMART READER

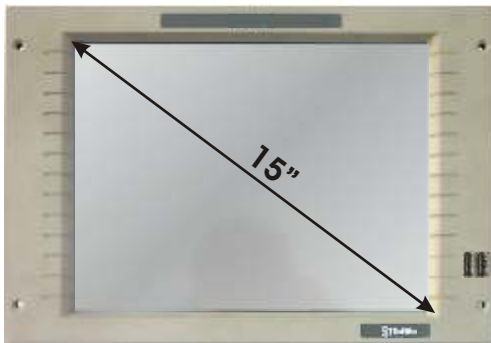


SOFTWARE FEATURES	
OPERATING SYSTEM	
MS-Windows	Windows XP embedded®, XP-RTOS
Linux	Real time Linux embedded
PROGRAMMING LANGUAGES	
Antares Explorer	Intuitive graphical development environment with optimized vision library HTIL Halcon libraries Compliant
SDK	Standard Microsoft and Linux environment
Development kit	Windows® and Linux development kits supported
COMMUNICATION	
Firmware Update	BackWall® Technology high performance SensorFox Technology Routing Matrix Technology
Data Exchange	TCP/IP, UDP/IP, RS232 or RS485
ELABORATION	
Data Processing	Complete Suitable for Hard/Soft approach

TECHNICAL FEATURES	
SYSTEM	
Microprocessor	Intel® ATOM® 1.6 Ghz.
Main Memory	DDR2 – 512 MB / 1GB
System Flash	Compact Flash
Engine	Hardware Image Library
Auxiliary Memory	DDRAM II – 1 GB
Mass Memory	SD Interface + Hard Disk (optional)
Synchronization	External trigger without delay
DIGITAL I/O	
Input	8 fast digital inputs @ 24 Vdc 1 Encoder Line Drive High Speed 2 USB port + 2 USB on Viewer
Output	8 PNP digital outputs @ 24 Vdc + 4 dedicated Strobo outputs
COMMUNICATION	
Ethernet Port	2 GigE Network Interface
RS 232	1 line baud rate 1200:115200
RS 485	1 multiple line baud rate 1200:115200 1 RS 485 optoisolated
CAN BUS	1 CAN BUS interface optoisolated
ENVIRONMENTAL	
Operating Temp.	-10° to 50° C
Operating Humid.	10 to 90% non cond.
Storage Temp.	-20° to 65° C
Storage Humidity	10 to 90% non cond.
Power Supply	24 Vdc ± 10% 12W @ 24 Vdc
Package body	Anodized aluminum
Dimensions	270 x 92 x 111 mm (L x H x W)
Protection level	IP 42



M12 Molecular Machine Analyzer Designed with DIN rails support for a fast and standard installation



M12 Viewer