



Complete Vision Solutions

TAG Family

Tattile Advanced Giga Ethernet Camera

Model TAG - 2
Line Scan



Encoder management
on board

In-camera real-time image
filtering and processing



GIG
VISION

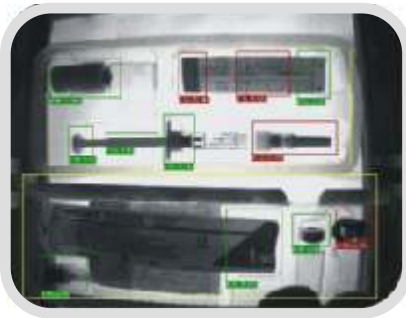
Model TAG 3
Back Focus

FEATURES

- Line Scan and Area Scan available
- Progressive CCD BW and Color
- Back Focal precalibrate for C mount distance
- Image output in RAW or JPG format
- Connection via Gigabit Ethernet
- Up to 50 meters with economic CAT5e cable
- Multiple cameras managed by one PC
- No frame-grabber required
- Minimum PC CPU usage
- SDK, filters & Tutorial to ease SW Development

Typical Applications

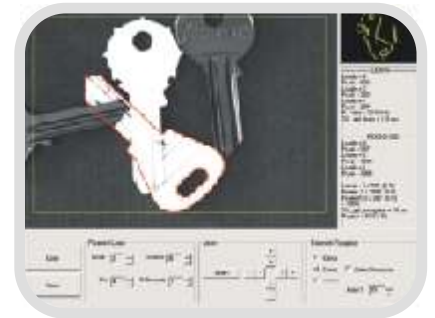
Pharma-Medical



Textile-Paper-Graphic



Digital Vision Inspection



Security



Traffic



Entertainment



Advanced in-camera Functions

ADVANCED IN -CAMERA FUNCTIONS	
IMAGE CAPTURE	
Global Shutter	Capture of all pixels at the exact same time
Asynchronous External Trigger	Maximum 200 microseconds delay
OneShot Software Trigger	For use software triggering of single image
Test Image Generation	To test correct set-up
RGB Gain Control	For white balancing or color correction
Shutter Control	From 60 microseconds to 200 milliseconds
Clamp/Offset Level	For contrast optimisation
Strobe Control	Auto-Synchronised with External Trigger
SERVICES	
Color Space Conversion	RGB 565, RGB 888, Bayer Code (raw) 10 bit, Y
User Definable Area of Interest	To manage bandwidth and CPU utilization
Programmable I/Os	2 inputs and 2 outputs
Multiple Image Output	Transfer both RAW or JPG and filtered images
FILTERS	
Real Time Shading Correction	Image normalization to compensate for lighting

Technical Features and TAG Camera Family

TECHNICAL FEATURES	
Network Interface	Giga Ethernet 802.3ab
PC Requirements	Pentium IV, 256 MB RAM
PC operating systems Requirements	MS-Windows XP Professional®, XP Embedded®, Vista®, Linux Kernel version 2.4.xx = 2.4.27 and 2.6 iptables = 1.3.3
Inputs	2 optoisolated inputs 24 Vdc 20mA
Outputs	2 PNP optoisolated outputs 24 Vdc 500mA
GigE Card Compatibility	3Com® Gigabit NIC, Intel PRO/1000MT Desktop Adapter, NetGear GA311/S, Broadcom® NetXtreme™ Gigabit Ethernet Controller
Cable	CAT5e up to 50 meters
Operating Temp.	0° to 50° C
Operating Humid.	10 to 90% non cond.
Storage Temp.	-20° to 65° C
Storage Humidity	10 to 90% non cond.
Power Supply	TAG: 12 Vdc to 24Vdc @ 9W TAG 2: 12 Vdc to 24 Vdc @ 12W TAG 3: 18 vdc to 24 Vdc @ 6W
Package body	Anodized aluminum
Size / Weight	TAG: 115 × 55 × 42 mm (LxHxW) – 277 g TAG 2: 113 x 90 x 70 mm (L x H x W) – 900 g TAG 3: 105 x 42 x 48 (L x H x W) – 320 g
Focal Distance	TAG 3: Precalibrate C mount focal Distance
Lens	C mount (Area Scan), F mount (Line Scan)
Protection level	IP 42

TAG CAMERA family			
MODEL	RESOLUTION	fps	Sensor Size
TAG MBD	640x480 BW	60	CCD 1/3"
TAG MCD	640x480 Color	60	CCD 1/3"
TAG MBD	720x576 BW	50	CCD 1/2"
TAG MCD	720x576 Color	50	CCD 1/2"
TAG MBD	1024x768 BW	20	CCD 1/3"
TAG MCD	1024x768 Color	20	CCD 1/3"
TAG MBD	1360x1024 BW	7,5	CCD 1/2"
TAG MCD	1360x1024 Color	7,5	CCD 1/2"
TAG MBD	1360x1024 BW	15	CCD 2/3"
TAG MCD	1360x1024 Color	15	CCD 2/3"
TAG MBD	1600x1200 BW	12	CCD 1/1.8"
TAG MCD	1600x1200 Color	12	CCD 1/1.8"

TAG – 3 CAMERA family		
MODEL	RESOLUTION	Sensor Size
TAG MBD	640x480 BW	CCD 1/3"
TAG MCD	782x582 BW	CCD 1/2"

TAG – 2 CAMERA family			
MODEL	RESOLUTION	fps	Sensor Size
TAG LBD	8160 BW	11000 lines/s	
TAG LCD	4080x3 Color	7000 lines/s	
TAG LCD	2048x3 Color	9000 lines/s	
TAG LBD	2048 BW	18000 lines/s	
TAG MBD	640x480 BW	200	CCD 1/3"
TAG MCD	640x480 Color	200	CCD 1/3"
TAG MBD	1600x1200 BW	30	CCD 4/3"
TAG MCD	1600x1200 Color	30	CCD 4/3"



Model TAG - 3, Side View