

B/W or Color CCD



Local Storage on SD memory card



Linux Available

FEATURES

- Stand alone complete vision system
- Fully IP addressable
- Low power consumption
- Progressive scan CCD sensor technology
- High Resolution up to 1600x1200 BW or Color
- Connection via Gigabit Ethernet
- Optimized vision library
- Open system to port your own C application
- Intuitive graphical development environment
- Secure Digital removable storage media

Typical Applications

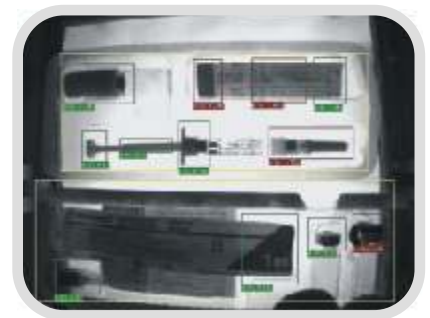
OCR/OCV



Inspection



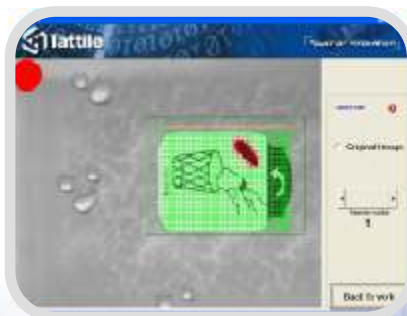
Blob Analysis



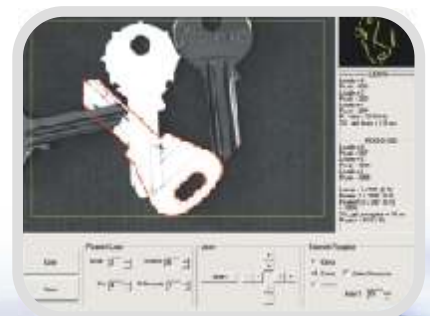
Color Analysis



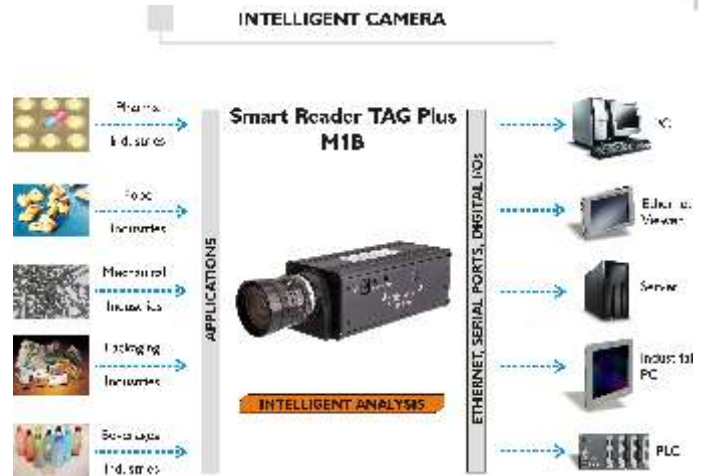
Surface Inspections



Pattern Recognition



SOFTWARE FEATURES	
OPERATING SYSTEM	
Proprietary Tattile O.S. - TOS	Multitask Operating System for custom application
Linux	Real time Linux embedded
PROGRAMMING LANGUAGES	
Antares Explorer	Intuitive graphical development environment with optimized vision library
Ansi C	Standard C environment
ARM Assembler	ARM Assembler environment
COMMUNICATION	
Firmware Update	Updatable via Ethernet or serial ports
Data Exchange	TCP/IP, UDP/IP, RS232 or RS485
CUSTOMIZING TOOLS	
Custom Tool	Ability to add custom C functions to the standard Antares development environment with direct access to TIL (Tattile Image Library)
Custom Program	You can write a complete new C application program
Software Porting	Software team to support the porting of your new or existing applications



TECHNICAL FEATURES	
SYSTEM	
Microprocessor	Intel® XScale® @ 733 MHz.
Co-processor	Analog Devices® Blackfin® Symmetric Multi-Processor
FPGA	Altera® Stratix® (25000 Logic Elements)
Analysis	Up to 60 Fps
Synchronization	External trigger without delay
CAMERA	
Sensor	BW or Color CCD
Acquisition	Progressive scan
Resolution	Up to 1600x1200
Audio Input	1 audio input 1,8 Vpp Z _{IN} =12K
Audio Output	1 mono audio output
Auto IRIS	Electronic/manual
Frame rate	60fps @ VGA ; 15fps @1600x1200
DIGITAL I/O	
Input	2 optoisolated inputs 24 Vdc
Output	3 PNP optoisolated outputs 24 Vdc
Strobe Output	1 open collector fast strobe out
COMMUNICATION	
Ethernet 10/100/1000	TCP, UDP, FTP, HTTP
RS 232	1 line baud rate 1200:115200
RS 485	1 line half duplex baud rate 1200:115200
SD Interface	Supports all mass memories (transfer rate 1 MB/s)
ENVIRONMENTAL	
Operating Temp.	-10° to 50° C
Operating Humid.	10 to 90% non cond.
Storage Temp.	-20° to 65° C
Storage Humidity	10 to 90% non cond.
Power Supply	12 to 32Vdc ± 5% 7W
Package body	Anodized aluminum
Size / Weight	142,5 x 49,5 x 60 mm (L x H x W) - 430 g (only body)
Lens	C mount related to application
Protection level	IP 42



Standard connectors and slot for SD memory card



Multitasking
O.S. On Board



Programming
Language



Audio Input/Output, Strobe,
Auto Iris electronic and manual