



Complete Vision Solutions

XP TAG

A Complete Image PC System in one Camera

FEATURES

Advanced Intelligent Camera with Microsoft Windows XP Embedded[®] on-board



- The first Intelligent Digital Camera with Features and Flexibility of a PC System
- Up to 1024x768 BW or Color progressive CCD
- Internal Storage with Compact Flash Memory
- Gigabit Ethernet Connection
- Integrated Light strobe management
- Native support to Vision Libraries TIL[®] (Tattile Image Library)
- Full support to HALCON[®] Software Libraries
- Very low power consumption

Full support to

HALCON[®] Software Libraries

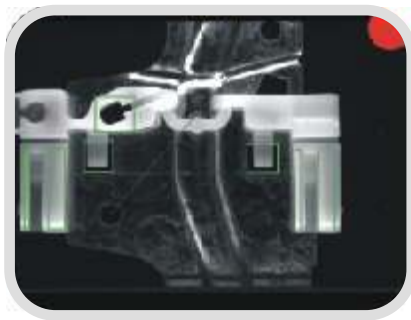
Move easily your PC applications inside XP Tag, the PC intelligent camera

Typical Applications

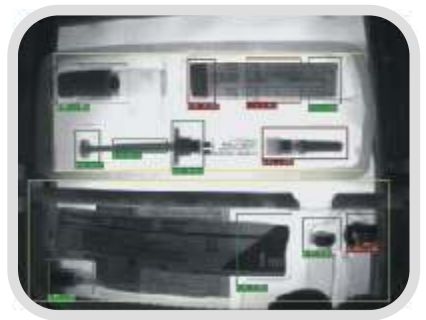
OCR/OCV



Inspection



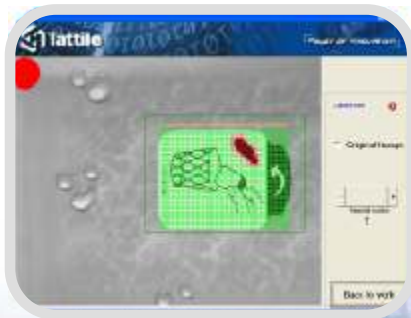
Blob Analysis



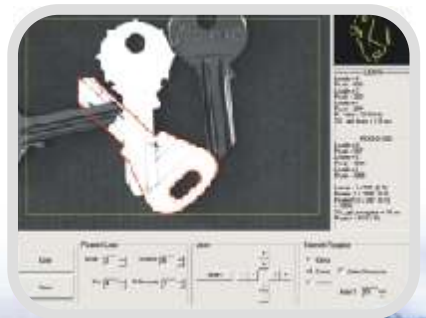
Color Analysis



Surface Inspections



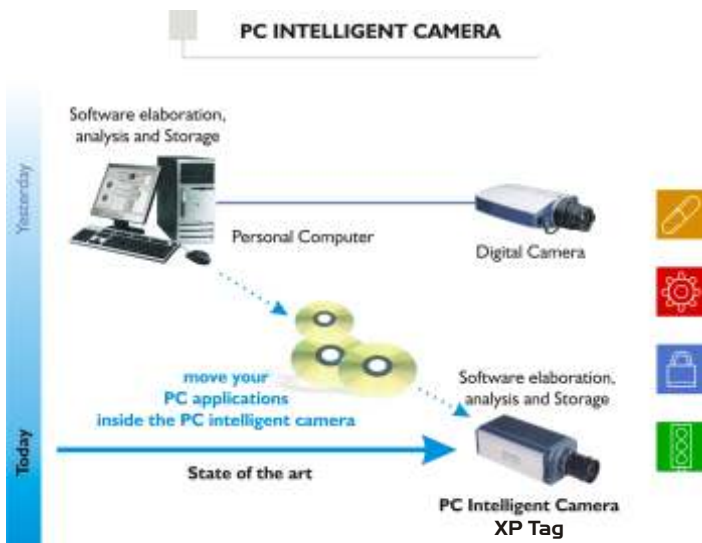
Pattern Recognition



SOFTWARE FEATURES	
OPERATING SYSTEM	
MS-Windows	Microsoft Windows XP Embedded [®] Service Pack 3
Framework Support	Frame work Microsoft .NET 2.0 [®]
PROGRAMMING LANGUAGES	
Antares Explorer	Intuitive graphical development environment with optimized vision library TIL (Tattile Image Library)
HALCON	Full support to HALCON Libraries by MVTec Software
Visual Studio Environment	Visual Basic, C/C++ , C#
SOFTWARE TOOLS	
Firmware Update	Infield upgradable FPGA firmware using Tattile's Tool "FPGA Updater 1.0.0.1"
Operating System Update	Using Windows Update Service
Remote Assistance	Using Windows Remote Desktop Connection



TECHNICAL FEATURES	
SYSTEM	
Main Processor	New x86 processor family, AMD Geode [™] LX 800 – 500 MHz, high-performances
FPGA	New complete FPGA Altera [®] Stratix II (15 KLE), image processing supported with blocks for real time elaboration; high performances
DSP	New Dedicated DSP Analog Devices [®] BLACKFin (BF561 Dual Core 600 MHz)
System Memory	256 MegaBytes - SDRAM
Mass Memory	2 GigaBytes – High Speed Compact Flash
Analysis	Up to 20 fps
Synchronization	External trigger with < than 10 μs latency
SENSOR	
CCD model	1/3" B/W or Color sensors (6 mm) Progressive Scan model ICX204-AL – B/W Progressive Scan model ICX204-AK – Color
Effective Resolution	1024 x 768 pixels
Unit cell size	4.65μm (H) - 4.65μm (V)
Frame Rate	Up to 20 fps
DIGITAL I/O	
Input	2 PNP optoisolated inputs 24 Vdc
Output	3 PNP optoisolated outputs 24 Vdc
Strobo	Integrated Strobo management
AUXILIARY I/O	
Audio Input	1 audio input 1,8 Vpp Z _N =12K
Audio Output	1 mono audio output
Auto IRIS	Electronic/manual
COMMUNICATION	
Giga Ethernet 10/100/1000 Mbps	TCP, UDP, FTP, HTTP
RS 232	1 line, baud rate 1200:115200
RS 485	1 line half duplex, baud rate 1200:115200
MECHANICAL and ENVIRONMENTAL	
Operating Temp.	0° to 50° C
Operating Humid.	10 to 90% non cond.
Storage Temp.	-20° to 65° C
Storage Humidity	10 to 90% non cond.
Power Supply	24 Vdc ± 10% - 9W
Package body	Anodized aluminum
Size / Weight	141 x 48 x 61 mm (L x H x W) - 430 g (only body)
Lens	C mount
Protection level	IP 42



Standard C mount lens



Standard connectors and Giga Ethernet port

Windows XP Embedded and Logo are registered trademarks of Microsoft Corporation Ltd.
HALCON and Logo are registered trademarks of MVTec Software GmbH.

Copyright © 2008 - Tattile srl, Mairano (BS), ITALY - All rights reserved - Tattile and logo are registered trademarks of Tattile srl
Distribution in the UK



Lambda Photometrics Ltd, Lambda House, Batford Mill, Harpenden, Hertfordshire AL5 5BZ
E: info@lambdaphoto.co.uk W: www.lambdaphoto.co.uk T: +44 (0)1582 764334 F: +44 (0)1582 712084

The leading supplier of scientific and industrial lasers, optical systems and associated accessories, fibre optic components and instrumentation, and machine vision products.

Tattile srl reserves the right to make changes to specifications of all its products without notice.

XP TAG Camera - 06/08 - ENG rel. 1