

Objectives


1X LWD

2X LWD

2X GC

2.5X STD

5X STD

10X LWD

20X STD

50X STD

100X STD

Power	Type	WD (mm)	FOV (mm)	NA	OpRes (µm)	ZYGO P/N
2.5X	STD	10.3	2.82 x 2.11	0.075	3.80	6300-0592-01
5X	STD	9.3	1.41 x 1.06	0.13	2.19	6300-0593-01
10X	STD	7.4	0.70 x 0.53	0.30	0.95	6300-0194-01
20X	STD	4.7	0.35 x 0.26	0.40	0.71	6300-0595-01
50X	STD	3.4	0.14 x 0.11	0.55	0.52	6300-0597-01
100X	STD	0.55	0.07 x 0.05	0.80	0.36	6300-0248-05
1X	LWD	8.3	7.04 x 5.28	0.03	9.50	6300-0316-01 6300-0318-01 (turret mountable)
2X	LWD	20.5	3.52 x 2.64	0.055	5.18	6300-0245-01
5X	LWD	20.5	1.41 x 1.06	0.14	2.04	6300-0249-01
10X	LWD	18.8	0.70 x 0.53	0.28	1.02	6300-0263-01
2X	GC	18.5	3.52 x 2.64	0.055	5.18	6401-0115-01
5X	GC	19.0	1.41 x 1.06	0.14	2.04	6401-0112-01
10X	GC	18.0	0.62 x 0.46	0.28	1.02	6401-0106-01

- Objectives specifications based on 1X system magnification.
- All objectives are infinite conjugate interferometric objectives.
- The 5X, 10X, 20X, 50X, and 100X standard objectives are parfocal.
- The 50X objective is thermally compensated.
- Storage case included with each objective.

Abbreviations: STD- standard, LWD- long working distance, GC- glass compensated, WD- working distance, FOV- horizontal x vertical field of view (based on 640x480 pixels), NA- numerical aperture, OpRes- optical resolution (Sparrow criteria = $0.5\lambda/NA$, $\lambda = 570$ nm).

Objective Turrets

Part Viewing

Manual 6-position

includes 3 standard objective adapters
(p/n 6300-0545-02)



Motorized 6-position

includes 3 standard objective adapters
(p/n 6300-0545-01)



Second LCD Monitor

(p/n 1510-300-079)

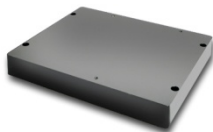


NewView 700™ Accessory Guide

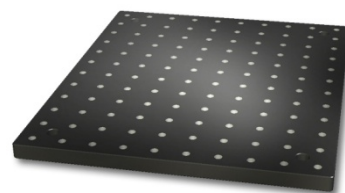
Part Stage and Fixtures



Manual Tip/Tilt and X/Y Part Stage
with $\pm 6^\circ$ tip/tilt and 4 in. (100 mm) x/y.
(p/n 6300-0153-01)



Stage Top Plates
raise thin parts to center
of tip/tilt rotation
1.03 in. thick, (p/n 6300-0130-02)
0.68 in. thick, (p/n 6300-0130-03)



Breadboard
attach custom fixtures in
place of part stage
1/4-20 holes on 1 inch centers,
10 x 12 in., (p/n 6300-0426-01)
M6 holes on 25 mm centers,
250 x 300 mm, (p/n 6300-0427-00)

Vibration Isolation Systems and Tables



Vibration Isolation Table
floor model, requires compressed air,
31 x 24 x 24 in.
(p/n 1840-700-105)



Wrap-around Table
used with Vibration Isolation Table,
34 x 52 x 35 in.
(p/n 6300-3434-01)

Calibration Standards



SiC Reference Flat
used when making system
error files
(p/n 1776-666-012)



Lateral Calibration Standard
used to determine actual
camera pixel spacing
(p/n 1670-000-020)



**Precision Lateral
Calibration Standard**
used when high precision
calibration is needed
(p/n 6300-2198-01)



Step Height Standards
used to verify vertical
accuracy 0.088 μm step,
(p/n 1776-666-009)
1.75 μm step, p/n 1776-
666-010 24.0 μm step,
(p/n 1776-666-011)

Items are not shown to scale. Specifications are subject to change without notice.

zygo[®]

ZYGO CORPORATION
LAUREL BROOK ROAD • MIDDLEFIELD, CT 06455
VOICE: 860 347-8506 • FAX: 860 346-4188
WWW.ZYGO.COM • EMAIL: inquire@zygo.com

OMP-0561B 05/10 © 2010 Zygo Corporation