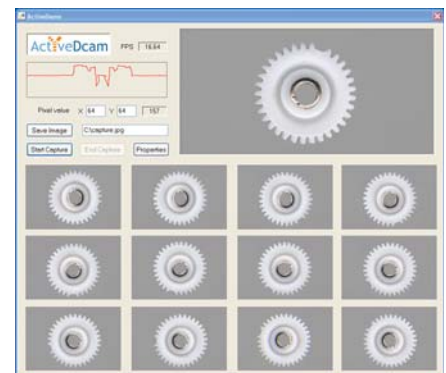


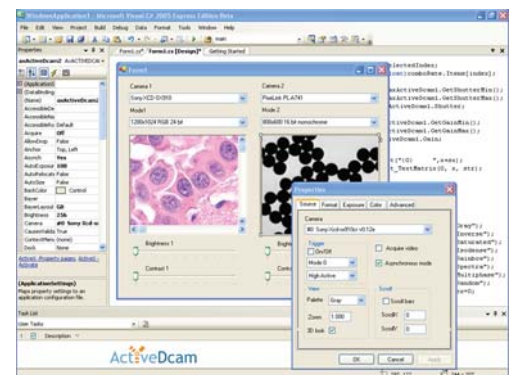
Drag and drop ActiveDcam onto the surface of your imaging application and get immediate support for multiple FireWire cameras!

KEY FEATURES

- [] Rapid application development in VB, VB.NET, C++, C#, Java, Delphi, Matlab, Python and other popular programming environments.
- [] Full compatibility with IIDC 1.31 specifications, 1394a and 1394b standards.
- [] System drivers for Windows 98/2000/XP/Vista.
- [] Acquire and display live video from multiple cameras.
- [] Select from several hardware and software trigger modes.
- [] Perform automatic color interpolation of raw video from Bayer cameras.
- [] Select a desired size and position for regions of interest.
- [] Adjust multiple camera parameters in real-time.
- [] Control non-standard camera settings via direct access to 1394 registers.
- [] Choose from several palettes for pseudo-color display.
- [] Overlay custom graphics and text on live video.
- [] Save images in BMP, TIF and JPEG formats with adjustable compression; record video to AVI files.
- [] Real-time image flipping and rotation; anti-tearing feature.
- [] Built-in background (dark and flat filed) correction.
- [] Instant access to pixel values and arrays.
- [] TWAIN and DirectShow drivers for interfacing to third party applications.
- [] Extensive documentation and source code samples.
- [] Customization available upon request.



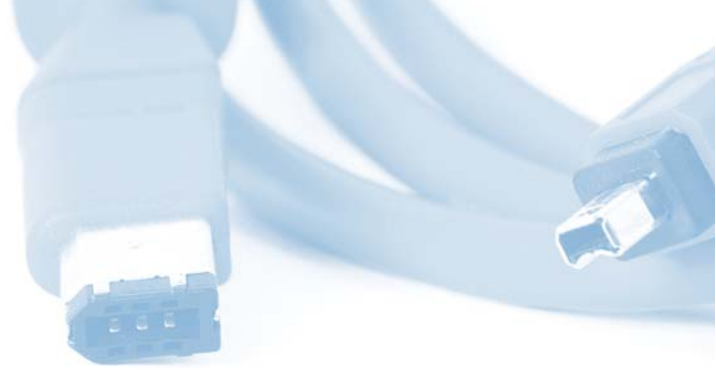
Machine Vision



Scientific Imaging

ActiveDcam

Camera Compatibility List*



Manufacturer

Model

License Packages

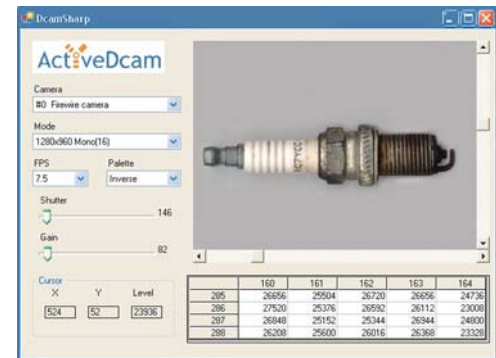
1stVision	MC Series
Aglaia Gmbh	INKA Series
Allied Vision Technologies	Dolphin, Guppy, Marlin, Oscar and Pike Series
Basler Vision	A100, A300, A600, Scout Series
C-Cam Technologies	BCi Series
Cohu	6100, 7200, 7700-3000
Hamamatsu	C8484-05G, C4742-95, C4742-96, C4742-98
Hitachi	HV-F and KP-F Series
Imaging Solutions Group	LW-1394 Series
IMI Technology	RHEIN, HAN and PEARL series
JVC	KY-F75U, KY-F1030
Kamera Werk Dresden	LOGLUX i5 FW
Micro-Epsilon	LLT2800 (laser-line profile sensor)
Net Electronic Technology	FOculus IEEE1394 series
Optronics	MicroFire, MacroFire, QuantiFire
Philips Applied Technologies	Dica 121, Inca 311, Inca 321
PixeLink	PL-A and PL-B Series
Point Grey Research	Dragonfly, Firefly, Flea, Scorpion
Prosilica	CV and EC Series
Redlake	MegaPlus II ES and EC Series
Sony	DFW and XCD Series
Toshiba Teli	CSB1100F, CSB4000F, CS8581QF, CSF5M3L18NR, FireDragon Series
Unibrain	Fire-i, Fire-i 400
VDS Vosskuhler	CCD Series
Videre Design	DCSG and MDCS2 Series

ActiveDcam 2.0 Full

Available as a Developer License (includes 2 runtime licenses) or a Developer Team License (includes 10 runtime licenses)

ActiveDcam 2.0 Runtime

Available in single licenses or volume license packages



Distribution in the UK

Lambda
photometrics

Lambda Photometrics Ltd

Lambda House, Batford Mill,
Harpenden, Hertfordshire AL5 5BZ

E: info@lambdaphoto.co.uk

W: www.lambdaphoto.co.uk

T: +44 (0)1582 764334

F: +44 (0)1582 712084

The leading supplier of scientific and industrial lasers, optical systems and associated accessories, fibre optic components and instrumentation, and machine vision products.

* ActiveDcam will work with any FireWire camera that complies with Version 1.30 and 1.31 IIDC-1394 specifications. If your camera is not on this list, please contact us or your camera manufacturer.