

## Measurement Software CS-820

This software application performs various kinds of auto measurements through remote control of the main unit of curve tracer CS-8000 series.

This software can execute stress test; which is difficult using traditional curve tracers, and can measure temperature characteristics of many devices, while controlling at the same time a hotplate and a thermostatic chamber.

It also can control switch matrix CS-700 series. It makes fully automatic test of multiple devices.

### Features

- Fully Automatic Semiconductor Static Test
- Friendly user interface
- Parameter characterization
- Temperature characteristics measurement
- Stress mode Life test and Accelerated test
- Testing multiple devices by matrix switch.

### Fully Automatic Semiconductor Static Test

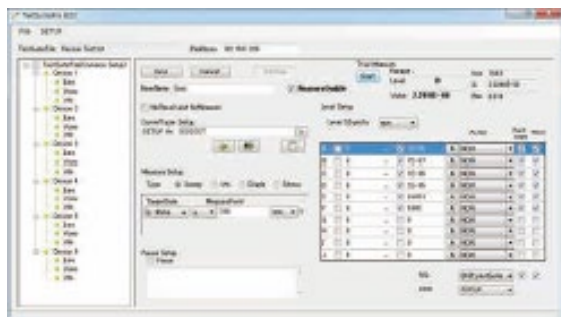
CS-8000 series cover up to 5kV and 2000A. This software can measure all static parameters of semiconductor such as leakage current, saturation voltage, breakdown voltage,  $r_{ds(on)}$  and etc.



Displays the measured value and the result of judgement

### Friendly user interface

How making automatic test sequence is very easy. Only getting test configuration by clicking copy icon, and fill some test conditions in some blanks.



User interface for automatic test configuration

### Testing multiple devices by matrix switch.

This software controls the scanner system CS-700 series as well as the curve tracer. Each unit of CS-700 series has from 4 to 10 channels. All the measurements for a power module or multiple devices can be fully automatically performed without a need for unplugging.

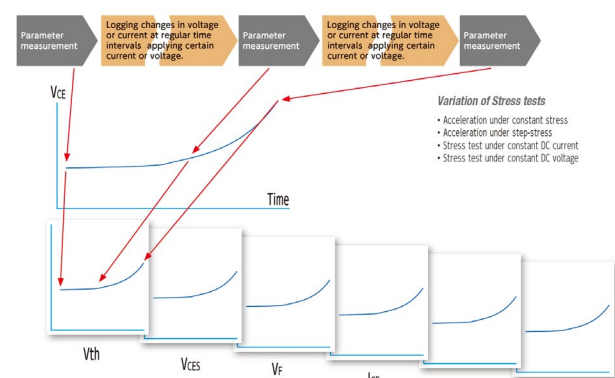


Curve Tracer CS-8000 and Scanner system CS-700

### Stress mode Life test and Accelerated test

This software supports long-time reliability tests. While the software monitors the voltage and the current via curve traces, differences of those traces are logged. Auto measurement of a wide variety of parameters is available for the stress test as illustrated below. The biasing will stop in excess of the limit value which is set for current or voltage as a lower and upper limit.

The software measures  $I_c$  or  $V_{ce}$  (Interval: 10s to 2h) keeping a certain voltage or current (10s to 1,000h)



The software measures parameters with keeping a voltage or current

### Temperature characteristics measurement

CS-820 controls thermal equipment (hotplates, temperature chamber). Even measurement that takes a long time such as per temperature can also be performed automatically.

Distribution in the UK & Ireland



**Characterisation,  
Measurement &  
Analysis**

**Lambda Photometrics Limited**  
Lambda House Batford Mill  
Harpenden Herts AL5 5BZ  
United Kingdom

**E:** [info@lambdaphoto.co.uk](mailto:info@lambdaphoto.co.uk)  
**W:** [www.lambdaphoto.co.uk](http://www.lambdaphoto.co.uk)  
**T:** +44 (0)1582 764334  
**F:** +44 (0)1582 712084