

# Spot Lights



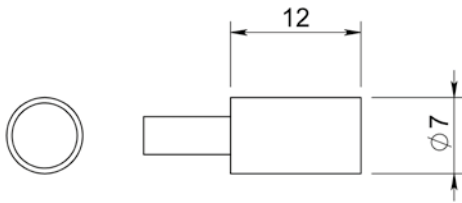
## SAX-spot light with 7 mm diameter

The small spot light is based on one S-LED.  
It is designed especially for lighting small areas.  
Option: Multi-light head applications are available with up to 10 spots using one controller.

## OSX-spot light with 16 mm diameter

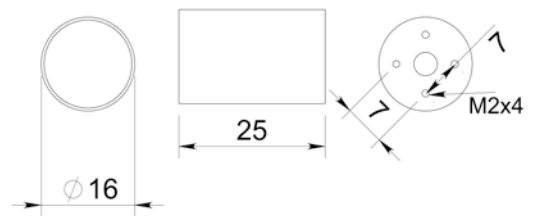
The small spot light contains four high-power O-LEDs.  
It is designed especially for lighting small areas.  
Option: Multi-light head applications are available with up to four spots using one controller.

### Mechanical Dimensions



Step files available on request

### Mechanical Dimensions



Step files available on request

### Color Information (for both types)

Replace "X" in order number by one character <sup>1</sup>	Color	Wavelength (nm)
H	Red	617
W	White	
R <sup>2</sup>	IR	880
B	Blue	465
G	Green	520

<sup>1</sup> Example for red spot light: SAH3 7007

<sup>2</sup> Only for SAX3 7007

### Order Information (for both types)

Order number	Sizes (mm)		Controller <sup>3</sup>	
	outer ø	height	continuous/ switching mode	strobe mode
SAX3 7007	7	12	1 A	8 A
OSX3 7016	16	25	1 A	8 A

<sup>3</sup> See "Controller selection" for details

Distribution in the UK & Ireland



**Lambda Photometrics Limited**  
Lambda House Batford Mill  
Harpenden Herts AL5 5BZ  
United Kingdom  
E: [info@lambdaphoto.co.uk](mailto:info@lambdaphoto.co.uk)  
W: [www.lambdaphoto.co.uk](http://www.lambdaphoto.co.uk)  
T: +44 (0)1582 764334  
F: +44 (0)1582 712084

**Characterisation,  
Measurement &  
Analysis**

### Options (for both types)

- Cable length and type see "Order options"