



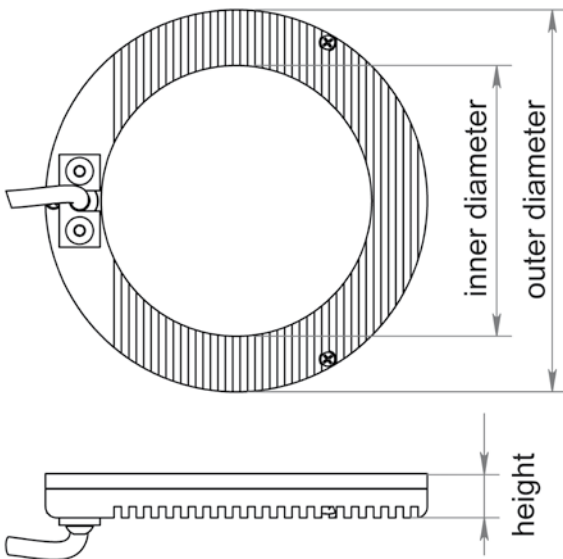
Dark field lights

Dark field lights are ideal for detecting edges and contours.

The standard light beam angle is 80°. Customized adjustment from 70° to 90° is possible.

The dark field lights have a diffuser for evenness of illumination.

Mechanical dimensions



Order information

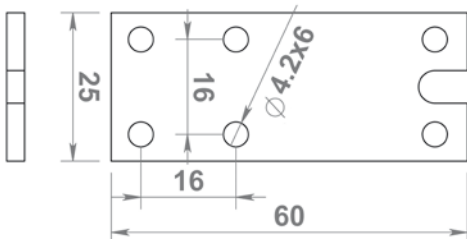
Order number	Sizes (mm)			Light beam angle	Controller ¹⁾	
	outer Ø	inner Ø	height		steady mode	strobe mode
PAX3 4025	25	15	9.5	5°	1 A	8 A
SAX3 4072	72	42	12	10°	1 A	8 A
SAX3 4103	103	73	12	10°	1 A	8 A
SAX3 4166	166	136	12	10°	1 A	8 A
SAX3 4213	213	183	12	10°	1 A 3 A ²⁾	8 A 24 A ²⁾
SAX3 4276	276	246	12	10°	1 A 3 A ²⁾	8 A 24 A ²⁾

¹⁾ See controller selection for details

²⁾ For light colors white, blue, green and UV

Options

- Cable length and type see "Order options"
- Custom beam angle see "Order options"
- Bracket LAD3 4011:



Color information

Replace "X" in order number by one character ³⁾	Color	Wavelength
H	Red	617 nm
W	White	
R	IR	880 nm
B	Blue	465 nm
G	Green	520 nm
U	UV	395 nm

³⁾ Example for red dark field light: SAH3 4072

Distribution in the UK & Ireland



Characterisation,
Measurement &
Analysis

Lambda Photometrics Limited
Lambda House Batford Mill
Harpenden Herts AL5 5BZ
United Kingdom

E: info@lambdaphoto.co.uk
W: www.lambdaphoto.co.uk
T: +44 (0)1582 764334
F: +44 (0)1582 712084