

# Mega Speed<sup>®</sup> X8 PRO



**X8 PRO Back**

## 4000 FPS MEGA Pixel High Speed Camera!

**New Sensor Design!  
Excellent Image quality!  
So fast! So Easy!**



### Specifications

Work lights:	Built in high power LED work lights.	<b>“Hot Swap” Solid State Drive Never Run Out Of Memory Again!</b>
Temperature range:	0°C to 45°C Operational range. -40°C to +50°C storage range.	
Camera size:	Depth 7.8cm x width 22.8cm x height 12.5cm.	
Camera weight:	Mobile handheld camera. Light weight 1550g / 3.5 lbs with battery.	
Camera battery:	Lithium-ion re-chargeable / removable battery with power saving features.	
Input voltage:	14 VDC from wall adapter when required. Camera charges internal battery while plugged in and recording.	
Camera body:	Self contained, hand held with advanced light weight rugged shock absorbing Space Age ABS body.	
WiFi / LAN:	Camera can connect to LAN network and camera has optional WiFi connectivity.	
LCD screen:	Rear high resolution LCD screen. Full touch screen operation and control.	
Image Sensor:	4/3" color or monochrome 1280 x 800 format CMOS 10 bit, 14um pixel pitch.	
ISO Value	12,000.	
Low light setting:	25 fps, 40 ms exposure time for pre-capture setup and focus plus built in high power LED work lights.	
High Speed Mode:	4000 fps @ 1280 x 800 resolution and 100,000 fps at minimum resolution..	
Streaming Mode:	Camera can stream in long record mode to the internal SATA solid state drive	
Shutter speed:	Global electric shutter 2 us to 40 milli-seconds in precise 1-2 us steps for no high speed blur.	
Trigger in:	3 to 48 VDC TTL centre pin positive, manual, external or countdown timer.	
Data Acquisition:	Data acquisition connection of rear of camera to accept outside signal source.	
Input / output ports:	Triggers: Pre / Post, Single Sequence, Multiple Start/Stop & Continuous Mode Trigger, Sync. & ADC.	
Storage Options:	One hot swap SSD, 2 X USB & 2 X SD ports for use with USB flash drives and SD cards.	
File Formats:	User can save images in AVI, JPEG, BMP, TIFF, RAW and DNG file formats.	
Video Out Formats:	HDMI interface for TV / monitor and one optional 3GSDI out port.	
Optical interface:	Standard “C” Mount. “F” Mount is optional.	
Solid State Drive:	One hot-swap re-moveable 240 GB Solid State Drive expandable to 512 GB or 1 TB.	
Removable storage:	One solid state drive, 2 USB ports & 2 SD ports.	
Strobe/ Sync out:	3.3 VDC TTL via multi pin connector center pin positive, active high.	
Tripod Support:	Camera has integrated 1/4 x 20 tri-pod thread.	
Camera RAM:	16 GB ( Giga Byte ) internal high speed internal image buffer memory.	
IRIG B:	Optional IRIG B time code ready via multi pin connector for IRIG B time stamping on recorded images.	
PC software:	Ships with Camera Control for image transfer, object tracking, image analysis, video editing software.	
PC requirements:	2GHz, 8 GB RAM. 1 USB and one Gig E connection. (Only needed if you connect camera to a PC)	
PC interface:	Gigabit Ethernet for full camera control and downloading files from the camera's solid state drive. User can also remove the SSD and connect it to the PC with the supplied USB DOC cable.	

# Mega Speed<sup>®</sup> X8 PRO

FEATURES

**A Portable Hand-Held High Speed Camera For Lab Or Field Use. No PC, No Lights, No Cables Required!**

Rugged, impact resistant, shock protected, high strength injection molded case

Industry standard "C" mount or optional "F" mount for easy lens selection

Re-moveable solid state drive for years of worry free performance and convenient memory upgrades

Convenient neck strap mounts for added comfort while recording

Ergonomic over-molded rubber hand grips prevent accidentally dropping your camera

Built in high power LED work lights. No need to drag around or plug in extra work lights

Large 6" screen for a clear view of your recordings

Several detachable and on-board file storage options like SDHC, USB or hot-swap solid state drives

HDMI & USB mouse ports for remote viewing the camera in confined spaces

Gigabit LAN control for when you want to control the camera from your PC

Sync in/ sync out, triggers, frame marker ADC & IRIG-B input options available

Intelligent charging module charges the battery while recording

Over-molded rubber screen bumper protects the high resolution touch screen

1/4 x 20 TPI tri-pod mounts for secure camera mounting

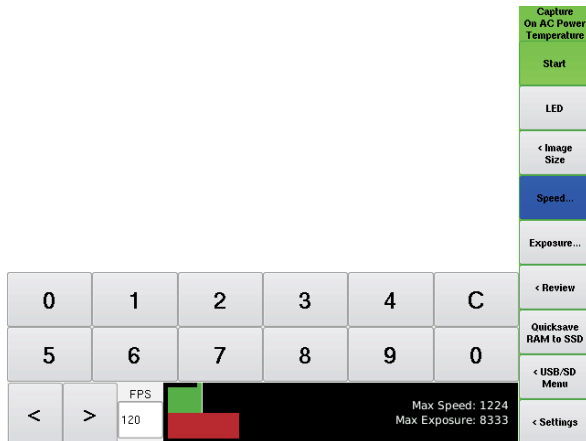
Recording rates from 30 fps to 100,000 fps

All Inclusive 3 year Warranty

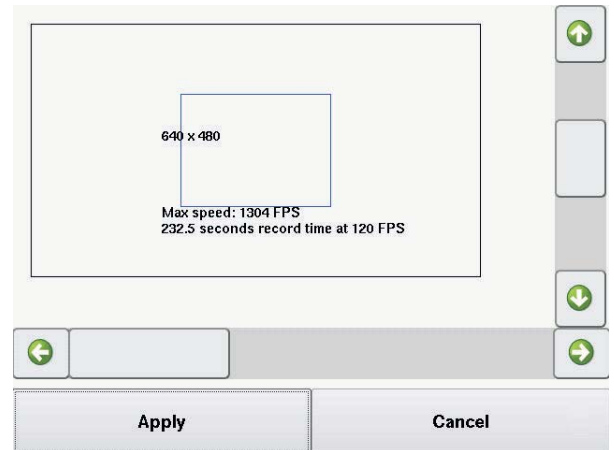
# Mega Speed<sup>®</sup> X8 PRO

## FEATURES

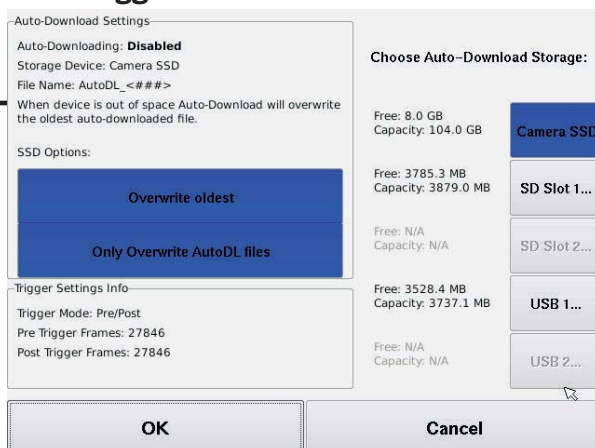
### Easy To Follow Menu For All Camera Settings



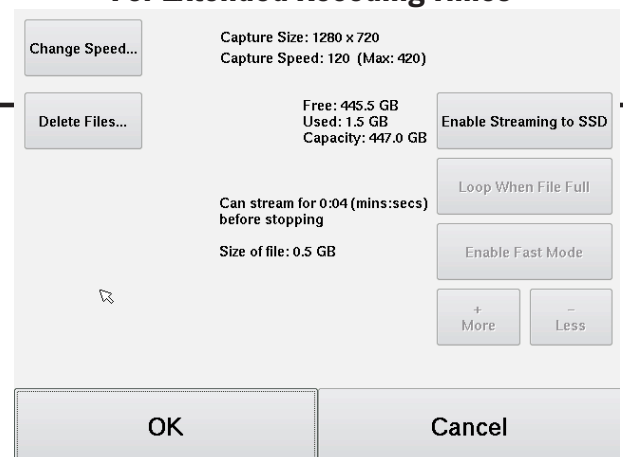
### Select Any Image Size To Match your Application



### Auto-Download Options To Continuously Save Event Trigger Video From Your PLC



### Save Right To The Cameras SSD For Extended Recording Times



### Multiple Storage & File Saving Options



### Easy to Manage File Location Menu

