

KL Gooseneck Light Guides

for KL Light Sources



These are flex and stay light guides that remain in place after positioning, providing flexible and obedient incident illumination for space-constrained applications.

Features:

- Available with one, two or three branches.
- Available as 2-branch Gooseneck plus flexible branch (Combi Light Guide).
- Focusing optics and filter accessories available.
- High white light transmission thanks to the use of SCHOTT PURAVIS® fibers.

Advantages:

- Perfect trade-off between flexibility and mechanical stability.
- Mechanical stability enables long-term usability and precise positioning for complete control of light placement.
- The Combi Light Guide can be fixed stationary at the microscope post.

Types and compatibility

Type	Compatible cold light source	Part No.	Length	End tip Ø	End tip length	Active Ø branch	Active Common end Ø	Outer Ø Jacketing	Light source adapter Ø
			(L)	(E)	(l)	(b)	(B)	(D)	(F)
1- branch	KL 300 LED	170.101	500 mm 19.69"	6 mm 0.24"	20 mm 0.79"	3.5 mm 0.14"	5 mm 0.20"	11 mm 0.43"	9 mm 0.35"
	KL 1600 LED KL 2500 LED KL 1500 HAL	154.101	600 mm 23.62"	6 mm 0.24"	20 mm 0.79"	4.5 mm 0.18"	4.5 mm 0.18"	11 mm 0.43"	10 mm 0.39"
2- branch	KL 300 LED	170.202	500 mm 19.69"	6 mm 0.24"	20 mm 0.79"	3.5 mm 0.14"	5 mm 0.20"	11 mm 0.43"	9 mm 0.35"
	KL 1600 LED KL 2500 LED KL 1500 HAL	154.202	600 mm 23.62"	6 mm 0.24"	20 mm 0.79"	4.5 mm 0.18"	6.4 mm 0.26"	11 mm 0.43"	10 mm 0.39"
3- branch	KL 1600 LED KL 2500 LED KL 1500 HAL	154.302	600 mm 23.62"	6 mm 0.24"	20 mm 0.79"	4.5 mm 0.18"	7.8 mm 0.31"	11 mm 0.43"	10 mm 0.39"
Combi Light guide: 2-branch Gooseneck and 1-branch Flexible Light Guide	KL 300 LED KL 1600 LED KL 2500 LED KL 1500 HAL	170.402	(L) 500 mm 19.69" (L*) 800 mm 31.50"	6 mm 0.24"	20 mm 0.79"	4.5 mm 0.18"	6.4 mm 0.26" randomized	(D) 11 mm 0.43" (D*) 14 mm 0.55"	9 mm 0.35" and 10 mm 0.39"

For compatibility with discontinued SCHOTT light sources and third party products, please contact us.

We provide a variety of optical and mechanical accessories for our KL light guides. For details please refer to our system diagrams or according datasheets.

Distribution in the UK & Ireland



Lambda Photometrics Limited

Lambda House Batford Mill
Harpenden Herts AL5 5BZ
United Kingdom

E: info@lambdaphoto.co.uk

W: www.lambdaphoto.co.uk

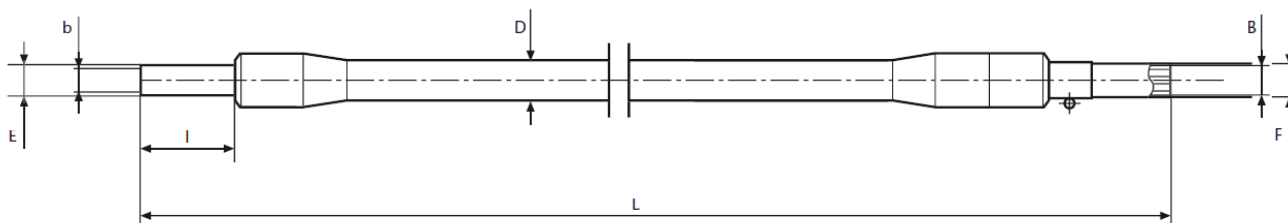
T: +44 (0)1582 764334

F: +44 (0)1582 712084

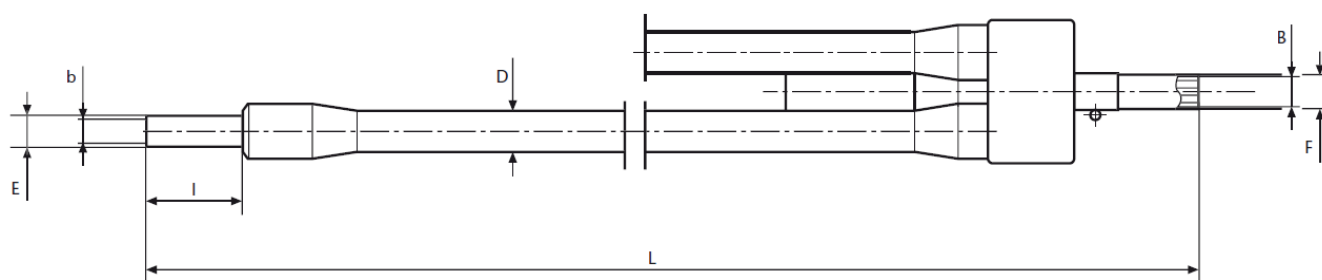
**Characterisation,
Measurement &
Analysis**



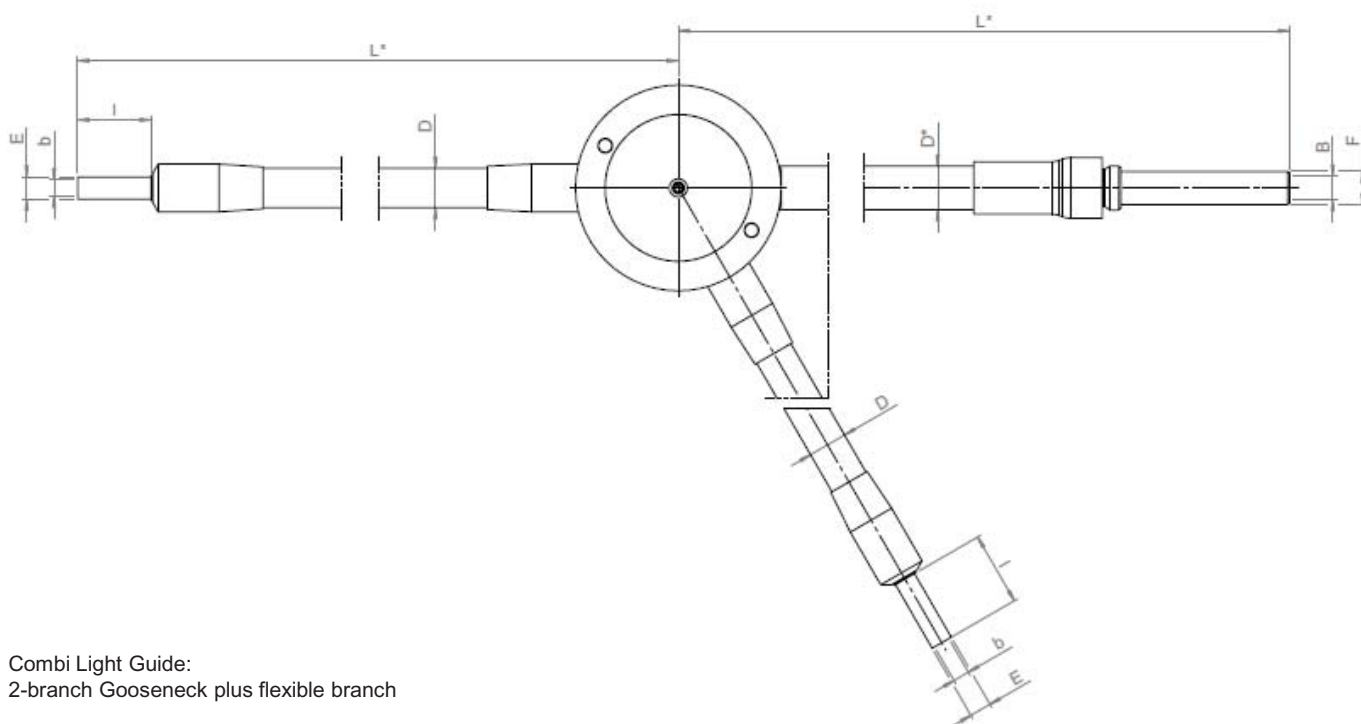
Dimensions



1-branch



2- and 3-branch



Combi Light Guide:
2-branch Gooseneck plus flexible branch

Pictures are provided for illustration purposes only, and may not provide an accurate reflection of the actual product.

All specifications are subject to change without prior notice. This datasheet or any extracts thereof may only be used in other publications with express permission of SCHOTT. © SCHOTT AG

Lighting and Imaging
SCHOTT AG
Hattenbergstrasse 10
55122 Mainz
Germany
Phone: +49 (0) 6131/66-7796
Fax: +49 (0) 6131/66-7850
info.microscopy@schott.com
www.schott.com/microscopy

SCHOTT
glass made of ideas