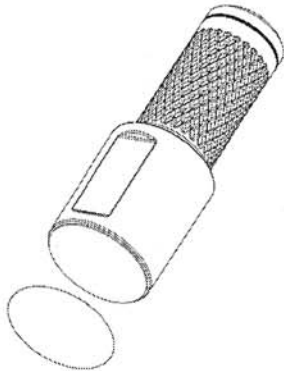


PCBite Installation Guide

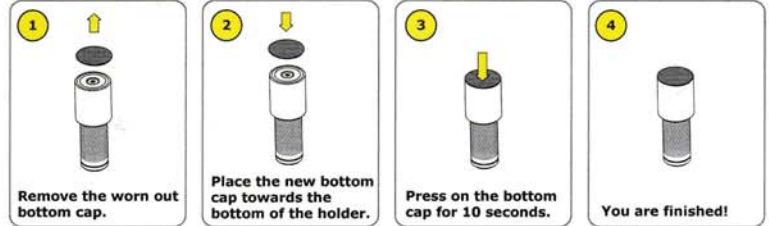
1 Protective foil removal

1a) Remove the thin protective foil underneath the PCBite holder, see picture 1a.

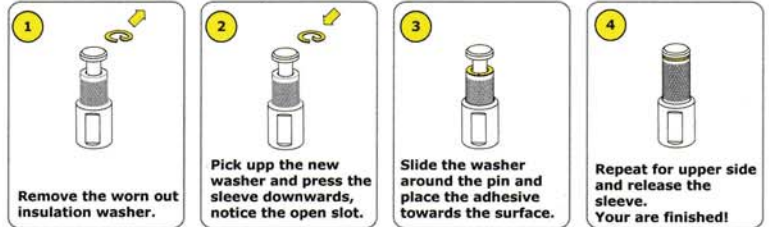


picture 1a

Bottom cap replacement



Insulation washer replacement



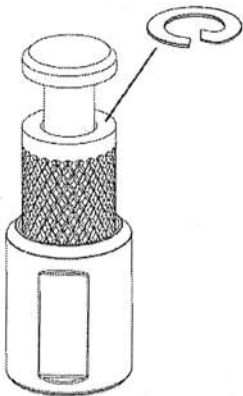
2 Insulation washers assembly

2a) Pick up a washer and remove the protective foil, notice there is an open slot, see picture 2a.

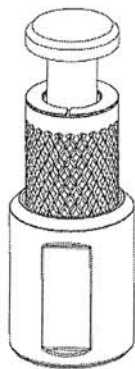
2b) Press the sleeve downwards, see picture 2a.

2c) Slide the washer around the pin and place the adhesive towards the lower aluminium surface, see picture 2b.

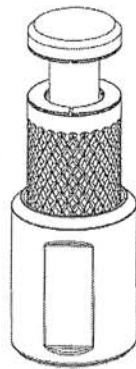
2d) Repeat for upper side, see picture 2c.



picture 2a



picture 2b



picture 2c

Distribution in the UK & Ireland



Lambda Photometrics Limited
 Lambda House Bafford Mill
 Harpenden Herts AL5 5BZ
 United Kingdom

**Characterisation,
 Measurement &
 Analysis**

E: info@lambdaphoto.co.uk
W: www.lambdaphoto.co.uk
T: +44 (0)1582 764334
F: +44 (0)1582 712084