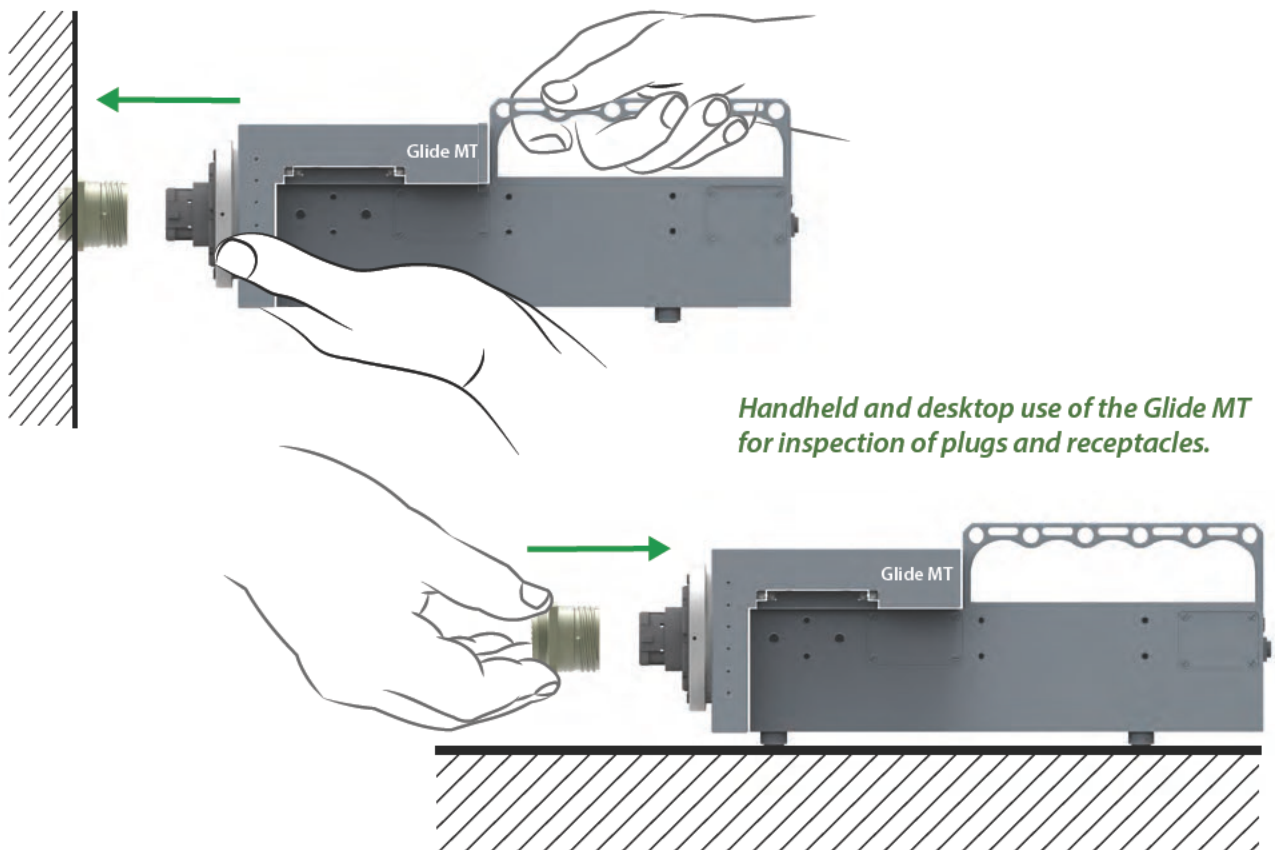


Glide MT

Robotic microscope for inspection of MIL-DTL-38999 connectors



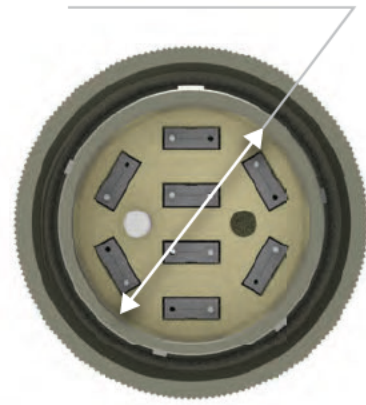
The Glide MT is a robotic 2D microscope specifically designed for the visual inspection of multiple MT end faces in a MIL-DTL-38999 connector. Equipped with an XYZ motion system, the microscope can move between ferrules in a programmed sequence, enabling fully automated inspection process. MaxInspect™ software detects and reports scratches, defects, and contamination on the fiber end face surfaces.



Applications

- Visual inspection during connector production, both after ferrules are inserted (pre-testing) and post-testing, before packaging.
- Receiving inspection.
- Field inspection prior to installation, as well as maintenance and troubleshooting.

27.8 mm Inspection Field



Sample connector configuration that can be inspected with the Glide MT.

Specification

Connectors inspected:	multi-channel MIL-DTL-38999 connectors with MT insert (up to 24 MT ferrules) or single-fiber termini insert; MTP/MPO, other multi-fiber, and large core connectors.
Field of view:	4.2 × 2.8 mm
Inspection field:	D=27.8 mm (achieved via automated XY movement)
Defect size detection:	0.5 μm
Effective resolution:	1.6 μm (based on MTF calculations)
Magnification:	0.75 μm/px or 360× (calculated for a 24" display at 1920 × 1080 resolution)
Focus:	Autofocus
Focusing range:	± 4 mm
Camera type:	CMOS, 20MP, monochrome
Data transfer cable:	USB 3.0, detachable
Power source:	24 V AC adapter
Dimensions (H × W × L):	101 × 89 × 266 mm (3.98 × 3.5 × 10.47 inches)
Weight:	1.35 kg (2.98 lbs)
Housing material:	Aircraft-grade aluminum
Compatible with:	Desktop PC, laptop, tablet
Inspection software:	MaxInspect™
Operating system:	Windows 10, Windows 11

Distribution in the UK & Ireland



**Characterisation,
Measurement &
Analysis**

Lambda Photometrics Limited
Lambda House Batford Mill
Harpenden Herts AL5 5BZ
United Kingdom

E: info@lambdaphoto.co.uk
W: www.lambdaphoto.co.uk
T: +44 (0)1582 764334
F: +44 (0)1582 712084