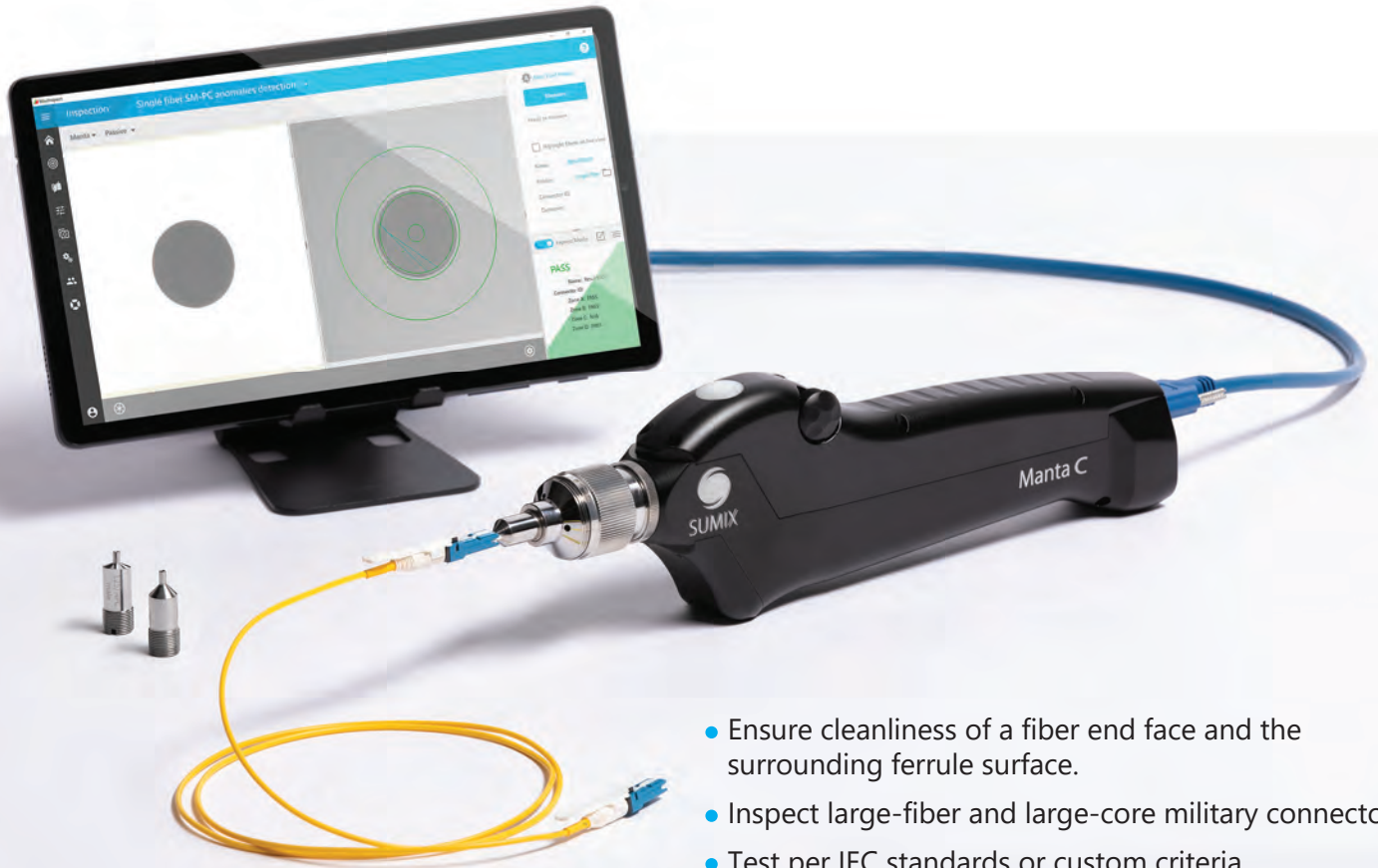
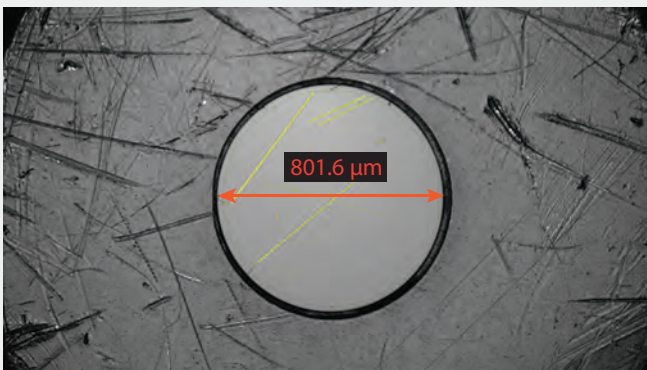


Manta C

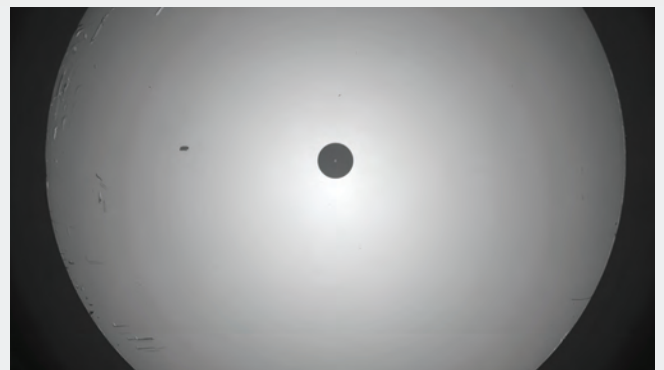
Wide view microscope for single-fiber inspection



- Ensure cleanliness of a fiber end face and the surrounding ferrule surface.
- Inspect large-fiber and large-core military connectors.
- Test per IEC standards or custom criteria.
- Measure alignment of stress elements in polarization-maintaining (PM) fibers.



Test result for a 800 μm SMA connector.

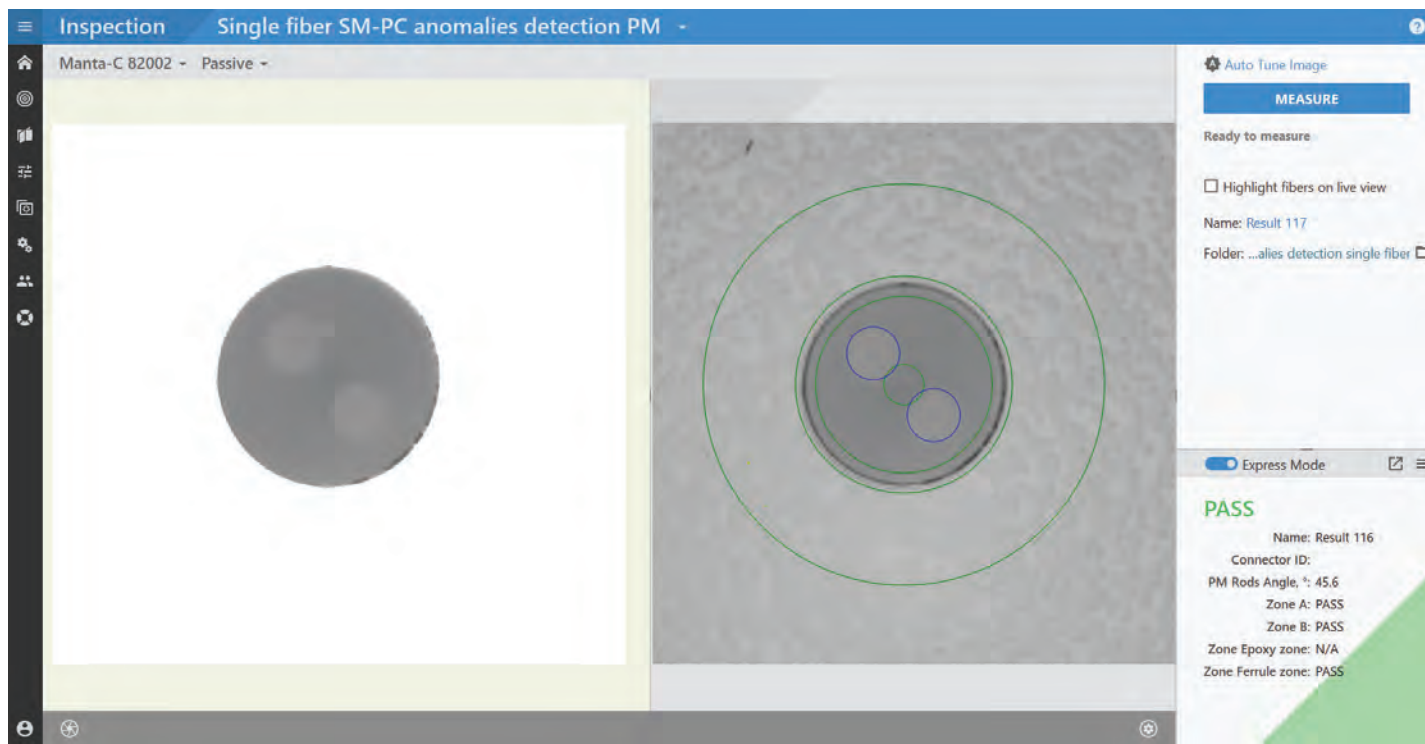


Live view of a single-fiber ferrule at full viewport.

Specification

Connectors tested:	LC, FC, SC, MU, E2000™, CS®, SN®, MDC, Arinc, Avim, mini-Avim, SMA, high-power SMA, and MIL-spec termini, on both patch cord and bulkhead sides. MTP®/MPO inspection is available in two scans.
Field of view:	2.26 × 1.27 mm
Defect size detection:	0.75 μm
Effective resolution:	1.5 μm (based on MTF calculations)
Magnification:	0.59 μm/px or 470× (for a 24" display 1920 × 1080)
Focus:	Autofocus
Measurement time*:	1 sec for single fiber, 6.5 sec for MT12, 6.9 sec for MT16, 9.7 sec for MT24
Camera type:	digital, USB 3.0
Power source:	USB 3.0 port of PC
Dimensions (H × W × L):	77 × 28 × 249 mm (3 × 1.1 × 9.8 inches)
Weight:	491 g (1.08 lbs)
Material:	aluminum housing, stainless steel barrel
Compatible with:	desktop PC, laptop, tablet
Operating system:	Windows 10, Windows 11
Software integration tools:	Excel/CSV, SQL, WebSocket API
MaxInspect™	
Centralized Database connectivity:	Yes

* doesn't include autofocusing time



Test result for a connector with polarization-maintaining (PM) fiber.

Distribution in the UK & Ireland



**Characterisation,
Measurement &
Analysis**

Lambda Photometrics Limited
Lambda House Batford Mill
Harpenden Herts AL5 5BZ
United Kingdom
E: info@lambdaphoto.co.uk
W: www.lambdaphoto.co.uk
T: +44 (0)1582 764334
F: +44 (0)1582 712084