

Be confident in your inspection results
when setting up or servicing connections.

Portable MPO Inspection Kit*

Manta Series

Fiber Inspection Microscope with **Android** Phone



Handy, fast, automated inspection tool for data-centers, fiber-to-the-antenna and other field applications. Single and multi-fiber patch cords, bulkhead and QSFP modules – all inspected with the unsurpassed resolution and level of detail.

Features and Capabilities

- Visual and Pass/Fail analysis of scratches, defects and contamination
- All MPO fiber end faces captured at once
- Fast processing speed – inspect MPO-12 in just 3-4 seconds
- One-hand operation for data-center technicians and tower climbers
- Wired USB 3.0 connection for uninterrupted operation
- Possibility to disable signal and data transmission upon request for security reasons
- Pass/Fail LED indicator to immediately see the result.

*currently includes Manta-HM microscope and Google Pixel 5a phone

Contact salesteam@sumix.com to get a quote or request a demo.

Distribution in the UK & Ireland



**Characterisation,
Measurement &
Analysis**

Lambda Photometrics Limited
Lambda House Batford Mill
Harpenden Herts AL5 5BZ
United Kingdom
E: info@lambdaphoto.co.uk
W: www.lambdaphoto.co.uk
T: +44 (0)1582 764334
F: +44 (0)1582 712084



MaxInspect™ application for Android™

Same powerful anomalies detection algorithms as in a desktop application. Multi-touch screen navigation. The inspection result at your fingertips. Literally.

Use pre-installed inspection scenarios or customize them up to your corporate requirements or regulations.

Task name: MT32 SM APC

Fiber Diameter: 125.00

Fibers per row: 16

Row count: 2

Column distance: 250.00

Row distance: 500.00

Scratch detection

Standard: IEC 61300-3-35/Ed2 SM APC

A (0.0-25.0um)

Scratch (4>0.0um)

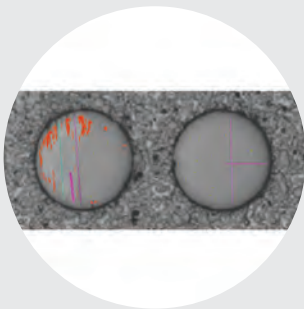
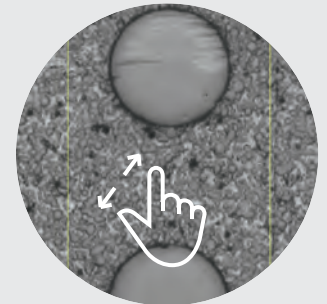
Scratch (0>3.0um)

Defect (0>0.0um)

B (25.0-115.0um)



Examine the whole ferrule end face and guide holes. Check the details if needed using multi-touch gestures.



Review measurement result data and mapped anomalies to check the defects and contamination before and after cleaning.

Fail

Fiber No	1	2	3	4	5
Verdict	FAIL	FAIL	FAIL	FAIL	FAIL
Zone A	0	1	1	0	1
Type: Scratch					
Width: > 0 μm					
Allowed: 0					
Zone B	1	0	0	0	0
Type: Defect					
Encompassing Circle					
Diameter: > 0 μm					
Allowed: 0					
Zone B	0	0	0	0	1
Type: Scratch					
Width: > 3 μm					
Allowed: 0					
Zone B	2	3	5	15	4
Type: Defect					
Encompassing Circle					
Diameter: 2 - 5 μm					
Allowed: 5					

Result browser

- Result 220 MT12 SM PC Jan 5, 2022, 3:08 PM
- Result 219 Single fiber Jan 5, 2022, 3:08 PM
- Result 218 Single fiber Jan 5, 2022, 3:08 PM
- Result 217 Single fiber Jan 5, 2022, 3:01 PM
- Result 216 Single fiber Jan 5, 2022, 2:59 PM
- Result 215 Single fiber Jan 5, 2022, 2:59 PM
- Result 214 Single fiber Jan 5, 2022, 2:58 PM
- Result 213 Single fiber Jan 5, 2022, 2:58 PM
- Result 212 Single fiber Jan 5, 2022, 2:58 PM
- Result 211 Single fiber Jan 5, 2022, 2:58 PM
- Result 210 MT12 SM PC Jan 5, 2022, 1:51 PM
- Result 209 MT12 SM PC Jan 5, 2022, 10:25 AM
- Result 208 MT12 SM PC Jan 5, 2022, 10:25 AM
- Result 207 MT12 SM PC Jan 5, 2022, 10:22 AM
- Result 206 MT12 SM PC Jan 5, 2022, 10:21 AM
- Result 205 MT12 SM PC Jan 5, 2022, 10:21 AM

Upload the results to a centralized data-base, save PDF reports for records or print them out if certification is required by your quality management policy.