

WIZ-QS-110

interferometer

Fixtures for FC, SC, MU, LC, E2000, Arinc, MS termini, bare fiber



USB 3.0 SuperSpeed connection

Low weight: 8.6 lbs
Compact size: 5.9 × 4.72 × 3.5 in



Single fiber



High resolution



White light, phase shift



Auto focus



Fast measurement



Low cost

Customizable fields

IEC, Telcordia standards

Parameters tested

3D, 2D interactive images

WIZ-QS-110 is an automated single-fiber interferometer designed as a basic solution for high-volume production, where speed, simplicity and precision matter the most.

Whitelight measurement algorithm and precision-aligned fixtures not requiring frequent calibration make it stand out from the competition in the same category of products.

Results Report

Result1288

Name: Result1288
Date & Time: 4/03/2019 4:15:51 PM
Task name: 2.5 PC
Scan quality: OK
Device SN, Fixture SN: WIZ-QS-110 13015, 1300044
Technician: Admin
Company: Sumix
Connector type: 2.5 PC
Fitting regions: D=250µm; E=140µm; F=50µm;
Pass/Fail standard: IEC61755-3-1

Measurement Parameter	Units	Pass/Fail Limits		Measured Value	Verdict
		Min	Max		
Ferrule Radius of Curvature	mm	5.00	30.00	17.65	PASS
Fiber Height	nm	-140.1	100.0	29.8	PASS
Apex Offset	µm	0.00	70.00	9.82	PASS
Polish Angle Error	°	-0.200	0.200	-0.023	PASS
Key Angle Error	°	-0.500	0.500	-0.022	PASS

Comments

3D Surface

3D Subtracted Surface

2D Subtracted S...

Modulation

4/03/2019 4:15:51 PM
DEV-1912-3ce3bf0

Distribution in the UK & Ireland



Lambda Photometrics Limited
Lambda House Batford Mill
Harpenden Herts AL5 5BZ
United Kingdom

**Characterisation,
Measurement &
Analysis**

E: info@lambdaphoto.co.uk
W: www.lambdaphoto.co.uk
T: +44 (0)1582 764334
F: +44 (0)1582 712084

Specification

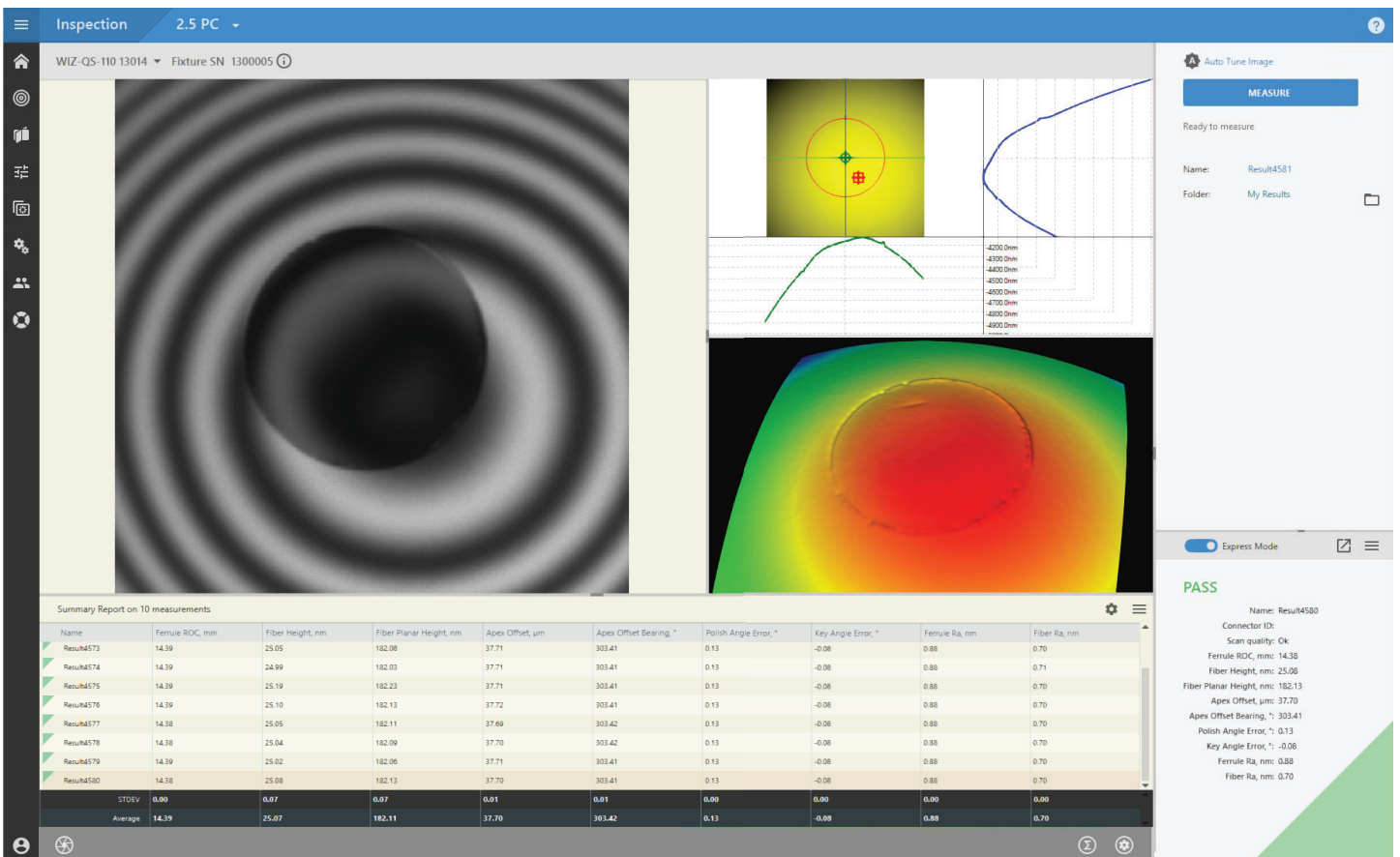
Field of view	1.2 × 0.9 mm
Optical resolution	2.5 μm
Best suitable for connectors/ferrules (PC and APC)	FC, SC, MU, LC, E2000, Arinc, MS termini, bare fiber, ST
Measurement mode	phase shift and white light
Scanning and calculation speed	1.3 sec*
Magnification	0.48 μm/px
Power supply	external, USB 3.0 cable, 12 V DC power adapter
Weight	3.9 kg (8.6 lbs)
Dimensions (H × W × L)	150 x 120 x 90 mm (5.9 × 4.72 × 3.5 in)
Focus	autofocus
Microscope mode	no

* Excluding autofocus

Features

- 100 μm scan range for fiber height
- One-click measurement
- Factory precision-aligned fixtures
- Industry-leading MaxInspect™ analytical software
- Data-base connectivity

Note: WIZ-QS-110 is an upgraded model of WIZ-QS+.



Sample measurement result with summary statistics for a batch of connectors.