

MAX-Quantum interferometer



Single fiber



Fast measurement



Auto focus



Multi-fiber



Fast measurement



White light, phase shift

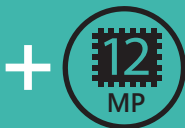
Fixtures for bare fiber, single and multi-fiber connectors, including MT16/32



What makes it unique?



Large field of view



Large imaging sensor



High resolution



High contrast optics



Reliable scratch detection



MT16/32 in one scan

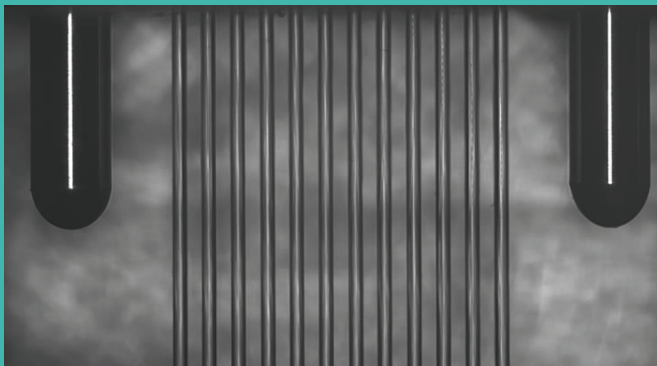


Additional parameters

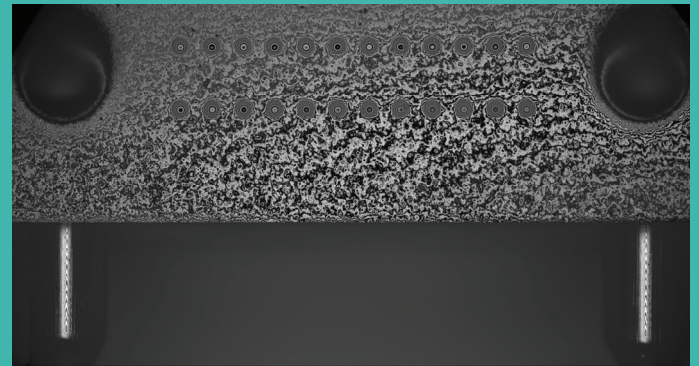
Additional MT ferrule parameters required by IEC

- angles and offset of fiber holes
- angles and parallelism of guide holes

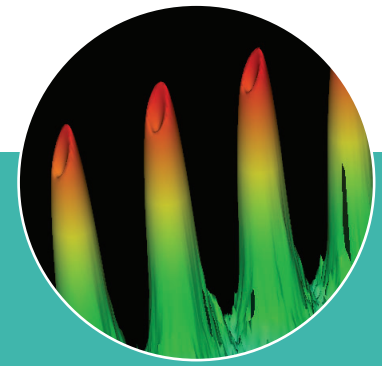
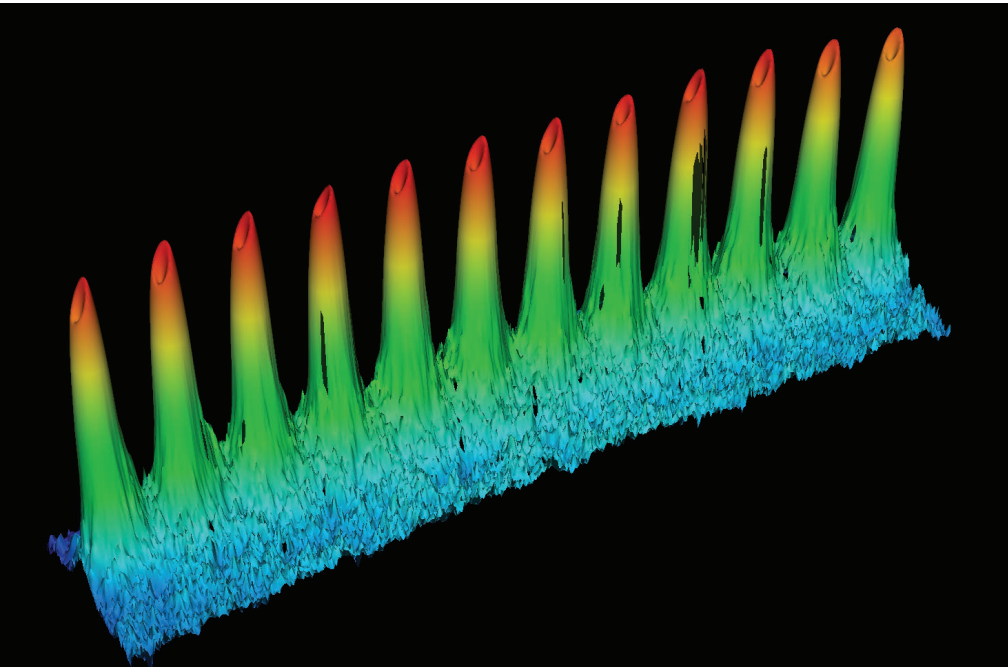
- angles and parallelism of guide holes



Side view of MT bare ferrule with inserted pins and fibers obtained with True Position™ fixture

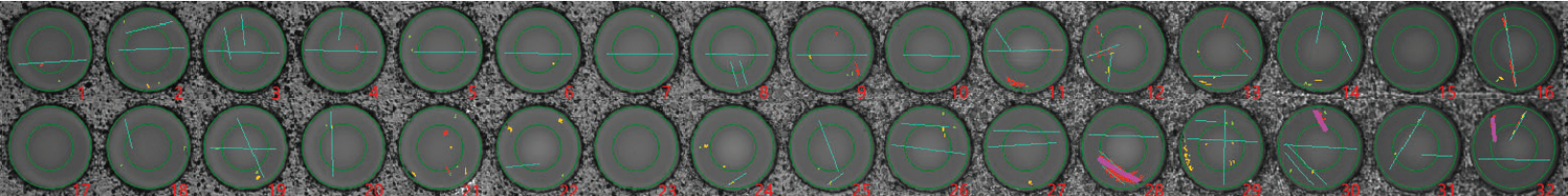


Side+front view of MT ferrule with pins obtained with MAX-SVF-series fixture



Applications

- Single and Multi-fiber Patchcords
- Mil Spec Termini
- Laser Cleaved Ribbons
- Cleaved Bare Fiber
- Bare Ferrule
- Large Diameter Fiber
- Flat Polish



Specification

Repeatability C.F.*: ROC: 0.9% (MT12); 0.04% (SC/APC)
 Fiber Height: 0.8 nm (MT12); 0.1 nm (SC/APC)
 Angles: 0.005 deg (MT12); 0.0002 deg (SC/APC)
 Apex Offset: 0.04 μ m (SC/APC)

Repeatability C.R.:** ROC: 1.2% (MT12); 0.05% (SC/APC)
 Fiber Height: 1.1 nm (MT12); 0.4 nm (SC/APC)
 Angles: 0.01 deg (MT12); 0.006 deg (SC/APC)
 Apex Offset: 1.0 μ m (SC/APC)

* Values were calculated from 30 consecutive measurements without interaction on connector between measurements (connector fixed) and represent one sigma value.
 ** Values were calculated from 30 consecutive measurements with removing and inserting connector between measurements (connector reloaded) and represent one sigma value.

Dimensions (H \times W \times L): 181 mm \times 213 mm \times 117 mm (7.13 in \times 8.39 in \times 4.61 inches)

Weight: 4.8 kg (10.6 lbs)

Power supply: external, USB 3.0 cable, 12 V DC power adapter

Distribution in the UK & Ireland



Lambda Photometrics Limited
 Lambda House Batford Mill
 Harpenden Herts AL5 5BZ
 United Kingdom
 E: info@lambdaphoto.co.uk
 W: www.lambdaphoto.co.uk
 T: +44 (0)1582 764334
 F: +44 (0)1582 712084

**Characterisation,
 Measurement &
 Analysis**



software supplied with Sumix probes