

SUMIX Interferometer Accessories



MAX-F-1.25/PC base fixture & MAX-F-1.25/APC base fixture with various key adapters

1.25/PC and 1.25/APC base fixtures with key adapters for measuring LC and MU ferrules and connectors with PC, UPC and APC end face.



MAX-F-2.5/PC base fixture & MAX-F-2.5/APC base fixture with various key adapters

2.5/PC and 2.5/APC base fixtures with key adapters for measuring SC, FC-R, FC-N, ST ferrules and connectors with PC, UPC and APC end face.

MAX-F-1.0/PC

Fixture for inspecting 1mm ferrules and connectors with PC end face, comes with a key adapter for a 7.5 mm ferrule length pin termini or for a 6.35 mm ferrule length pin termini upon customer's choice.



MAX-F-2.5/APC-OPTITAP

Fixture for inspection of OptiTap and SLIM connectors, APC type.



MAX-F-1.6/PC

Ferrule fixture for measuring 1.6 mm ferrules with PC end face (pin terminus and socket terminus), M29504/4 (measured with a key adapter) and M29504/5 style (measured without a key adapter).



E: contact@lambdaphoto.co.uk

T: +44 (0)1582 764334

www.lambdaphoto.co.uk

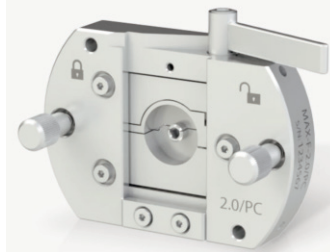
MAX-F-1.25/APC-Ar

1.25/APC connector fixture for measuring 1.25 mm ARINC 801 connectors with APC end face (with 30° key).



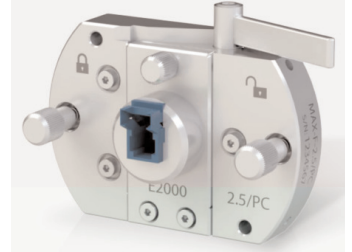
MAX-F-2.0/PC

Fixture for inspection of OptiTap and SLIM connectors, APC type.



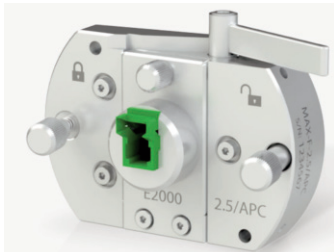
MAX-F-2.5/PC-E2000

E2000/PC connector fixture for measuring E2000™ connectors with PC (UPC) end face.



MAX-F-2.5/APC-E2000

E2000/APC connector fixture for measuring E2000™ connectors with APC end face.



MAX-F-SMA-905

3.2/SMA connector fixture for measuring SMA 905 and SMA 906 connectors.



MAX-F-1.25/APC-LC-D

LC/APC connector fixture for measuring LC Duplex connectors with APC end face.



MAX-F-1.25/PC-LC-D

LC/PC connector fixture for measuring LC Duplex connectors with PC end face.



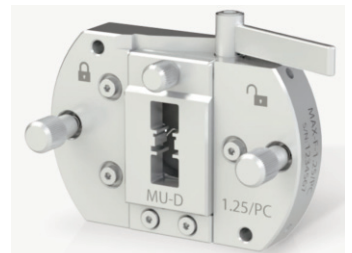
MAX-F-1.25/APC-MU-D

MU/APC connector fixture for measuring MU Duplex connectors with APC end face.



MAX-F-1.25/PC-MU-D

MU/PC connector fixture for measuring MU Duplex connectors with PC end face.



MAX-F-1.25/PC-S

Fixture for 1.25/PC ferrule with 3.5mm length, suitable for KANI and MU-simplified connectors, PC type.



MAX-F-1.25/PC-CS

1.25 mm PC connector fixture for measuring CS® connectors.



MAX-F-1.25/APC-CS-S

1.25 mm APC connector fixture for measuring CS® connectors (where polishing angles are directed in the same direction - initial CS design).



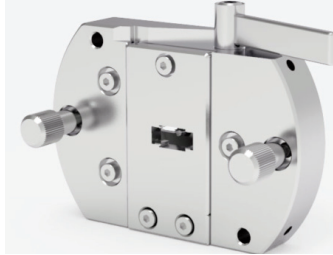
MAX-F-1.25/APC-CS-O

1.25 mm APC connector fixture for measuring CS® connectors (where polishing angles are directed in opposite directions).



MAX-F-1.25/PC-MDC

1.25 mm PC connector fixture for measuring MDC connectors. Supports MDC Jr. type.



MAX-F-1.25/PC-SN

1.25mm PC connector fixture for measuring SN® connectors.



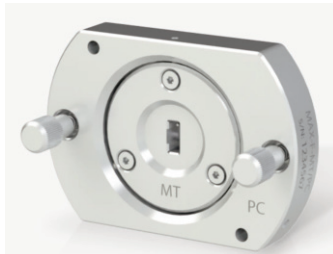
MAX-F-MT/APC

MT/APC ferrule fixture for measuring MT ferrules with APC end face (12 to 72 fibres).



MAX-F-MT/PC

MT/PC ferrule fixture for measuring ferrules with PC end face (12 to 72 fibres).



MAX-F-MT16/APC

Fixture for measuring 16-fibre and 32-fibre MT ferrules with APC end face.



MAX-F-MT16/PC

Fixture for measuring 16-fibre and 32-fibre MT ferrules with PC end face.



MAX-F-MTP/MPO-APC-F

MTP®/MPO APC female connector fixture for measuring MTP®/MPO female connectors with APC end face (12 to 72 fibres).



MAX-F-MTP/MPO-PC-F

MTP®/MPO PC female connector fixture for measuring MTP®/MPO female connectors with PC end face (12 to 72 fibres).



MAX-F-MTP/MPO-APC-M

MTP®/MPO APC male connector fixture for measuring MTP®/MPO male connectors with APC end face (12 to 72 fibres).



MAX-F-MTP/MPO-PC-M

MTP®/MPO PC male connector fixture for measuring MTP®/MPO male connectors with PC end face (12 to 72 fibres).



MAX-F-MTP/MPO16-PC-F

Fixture for MPO16/32 PC female connectors.



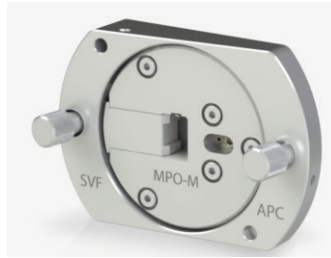
MAX-SVF-MPO-APC-M

Fixture for inspection of male MTP®/MPO patchcords, APC type, and measuring guide holes angles and parallelism. Suitable for 16-32 fibre and 12-72 fibre MTP®/MPO.

Female MTP®/MPO patch cords can be inspected if pins are inserted manually (order AC-MPO-PI pin insertion tool).

Needs calibration with a reference connector (order MAX-REF-SVF-MPO-APC-M).

**To be used with MAX-Quantum, MAX-QM+ interferometer only



MAX-F-MTP/MPO16-APC-F

Fixture for MPO16/32 APC female connectors.



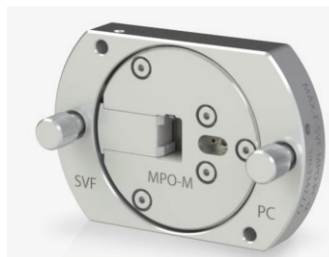
MAX-SVF-MPO-PC-M

Fixture for inspection of male MTP®/MPO patchcords, PC type, and measuring guide holes angles and parallelism. Suitable for 16-32 fibre and 12-72 fibre MTP®/MPO.

Female MTP®/MPO patch cords can be inspected if pins are inserted manually (order AC-MPO-PI pin insertion tool).

Needs calibration with a reference connector (order MAX-REF-SVF-MPO-PC-M).

**To be used with MAX-Quantum, MAX-QM+ interferometer only



MAX-TP-MT

Fixture for measuring angles and offset of fibre holes, angles and parallelism of guide holes of bare MT12 ferrules (incl. pre-angled ones). **To be used with MAX-Quantum only.



MAX-SVF-MT-APC

Fixture for inspecting geometry of MT/APC ferrules and measuring guide hole angles and parallelism. Suitable for 16-32 fibre and 12-72 fibre MT ferrules.

Needs calibration with a reference connector (order MAX-REF-SVF-MT/APC).

**To be used with MAX-Quantum, MAX-QM+ interferometer only



MAX-F-MTRJ/APC

MTRJ/APC ferrule fixture for measuring MTRJ ferrules with APC end face.

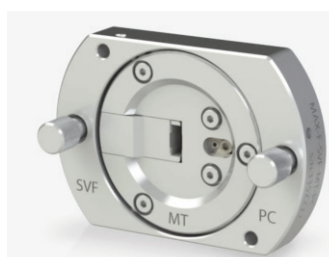


MAX-SVF-MT-PC

Fixture for inspecting geometry of MT/PC ferrules and measuring guide hole angles and parallelism. Suitable for 16-32 fibre and 12-72 fibre MT ferrules.

Needs calibration with a reference connector (order MAX-REF-SVF-MT/PC)

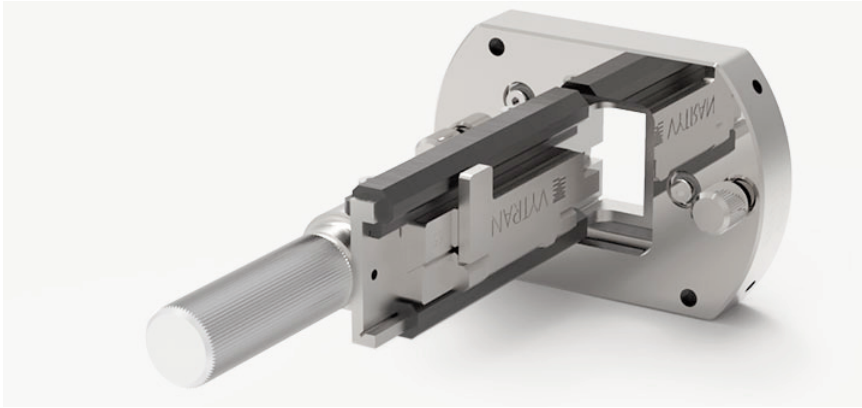
**To be used with MAX-Quantum, MAX-QM+ interferometer only



MAX-F-MTRJ/PC

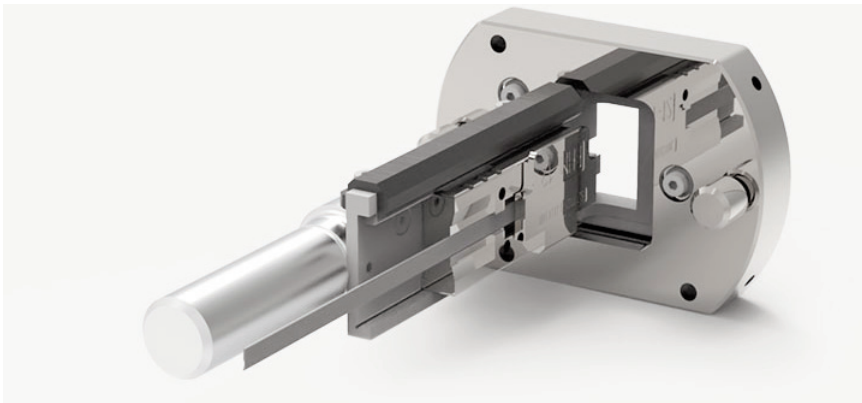
MTRJ/PC ferrule fixture for measuring MTRJ ferrules with PC end face.





MAX-F-BFV base fixture for measuring bare fibre

Bare fibre fixture for measuring straightly cleaved bare fibre of both mechanically and laser cleaved types. Coupled with a Vytran clamp.



MAX-F-RF/PC base fixture for measuring fibre ribbon

Ribbon fibre fixture for measuring straightly cleaved ribbon of both mechanically and laser cleaved types. Coupled with Sumitomo, Fujikura or other clamps.

AC-MPO-PI

Pin insertion tool to inspect female MPO patch cords with MAX-SVF-MPO-PC-M and MAX-SVF-MPO-APC-M fixtures.



SMX-FSW

USB foot switch for triggering measurement in MaxInspect™ software



SMX-BCR

1.25/APC connector fixture for measuring 1.25 mm ARINC 801 connectors with APC end face (with 30° key).



MPO-Verifier

Illumination module for polarity, continuity and fibre sequence verification of MPO patch cords (to be used with MAX-Quantum and MAX-QM+)



SUMIX MAX and **WIZ** interferometers are designed to inspect fibre optic ferrules, patch cords, pigtails and bare fibre during polishing and assembly. They enable you to check polishing quality, test connector end face geometry per IEC, Telcordia or your own custom standards and generate reports to supply with your cables. From single fibre up to MTP/MPO multichannel with integrated microscope anomaly detection, the Sumix range covers all bases.



Reference connectors for fixture verification

| | |
|------------------------------|---|
| SMX-REF-LC/APC | LC/APC reference connector for verification of 1.25/APC-LC SMX and MAX series fixtures. |
| SMX-REF-SC/APC | SC/APC reference connector for verification of 2.5/APC-SC SMX and MAX series fixtures. |
| SMX-REF-FC/APC-R | FC/APC reference connector (R-type) for verification of 2.5/APC-FC-R SMX and MAX series fixtures. |
| SMX-REF-FC/APC-N | FC/APC reference connector (N-type) for verification of 2.5/APC-FC-N SMX and MAX series fixtures. |
| MAX-REF-1.25/PC | 1.25/PC connector for verification/calibration of 1.25/PC MAX and SMX series fixtures. |
| MAX-REF-2.5/PC | 2.5/PC ferrule for verification/calibration of 2.5/PC MAX series fixtures. To be used with MAX-KA-2.5/PC-ferrule key adapter. |
| MAX-REF-1.6/PC | 1.6/PC ferrule for calibration/verification of 1.6/PC MAX series fixtures |
| MAX-REF-2.0/PC | 2.0/PC ferrule for calibration/verification of 2.0/PC MAX series fixtures |
| SMX-REF-MT/APC | MT/APC reference ferrule for verification of MT/APC SMX and MAX series fixtures. |
| SMX-REF-MT/PC | MT/PC reference ferrule for verification of MT/PC SMX and MAX series fixtures. |
| SMX-REF-MTP/MPO-APC-F | MTP/APC reference connector (female type) for verification of MTP/MPO-APC-F SMX and MAX series fixtures. |
| SMX-REF-MTP/MPO-APC-M | MTP/APC reference connector (male type) for verification of MTP/MPO-APC-M SMX and MAX series fixtures. |
| SMX-REF-MTP/MPO-PC-F | MTP/PC reference connector (female type) for verification of MTP/MPO-PC-F SMX and MAX series fixtures. |
| SMX-REF-MTP/MPO-PC-M | MTP/PC reference connector (male type) for verification of MTP/MPO-PC-M SMX and MAX series fixtures. |
| SMX-REF-MTRJ/PC | MTRJ/PC reference ferrule for verification of MTRJ/PC SMX and MAX series fixtures. |
| MAX-REF-MT16/PC | MT16/PC reference ferrule for verification of MAX-F-MT16/PC fixtures. |
| MAX-REF-MT16/APC | MT16/APC reference ferrule for verification of MAX-F-MT16/APC fixtures. |
| MAX-REF-SVF-MPO-PC-M | MPO-PC-M reference connector for verification and calibration of MAX-SVF-MPO-PC-M fixture. |
| MAX-REF-SVF-MPO-APC-M | MPO-APC-M reference connector for verification and calibration of MAX-SVF-MPO-APC-M fixture. |
| MAX-REF-SVF-MT/PC | MT/PC reference ferrule for verification and calibration of MAX-SVF-MT-PC fixture. |
| MAX-REF-SVF-MT/APC | MT/APC reference ferrule for verification and calibration of MAX-SVF-MT-APC fixture. |



E: contact@lambdaphoto.co.uk
T: +44 (0)1582 764334