

Fizeau high definition interferometer with patented QPSI™ acquisition for true on-axis common path metrology of optical surfaces or wavefront in the presence of vibration.

**SYSTEM OVERVIEW**

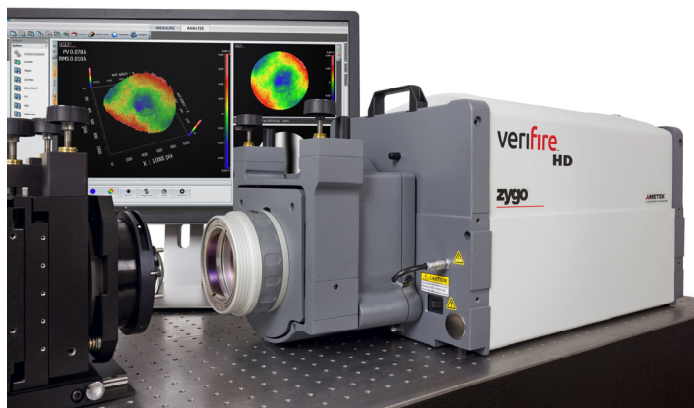
Measurement Capability	Measures surface form of reflective materials and optics, and transmitted wavefront of transparent optics
Data Acquisition Modes	PSI- temporal phase-shifting interferometry QPSI- vibration robust temporal phase-shifting interferometry DynaPhase™-vibration insensitive instantaneous interferometry (option)
Alignment System	Quick Fringe Acquisition System (QFAS) with twin spot reticle
Test Beam Diameter	4 inch (102 mm) or 6 inch (152 mm)
Alignment FOV	4 inch: ±3 degrees 6 inch: ±2 degrees
Optical Centerline	4.25 in. (108 mm)
Camera Details	Resolution: 2304 x 2304 pixels Frame Rate: 210 Hz Digitization: 8 bit Shutter Time: 200 µs – 10 ms
Acquisition Time	130 - 300 ms
Magnification	1X Fixed (1-50X digital)
Polarization	Nominally circular (1.2:1 or better)
Pupil Focus Range	4 inch: ±2 m, 6 inch: ±4.5 m
Computer and Software	High-performance Dell PC, Windows 10 64-bit, Mx™ software
Mounting Configuration	Horizontal or vertical
Remote Control	Wired and wireless remote with common interferometer function controls
Additional Options	CARS (Coherent Artifact Suppression)-minimizes artifacts from wavefront shearing, speckle or mottle
Accessories	See the ZYGO Laser Interferometer Accessory Guide, OMP-0463
Physical Envelope (LWH)	69 x 31 x 34 cm (27.3 x 12.1 x 13.4 in.)
Weight	≤85 lb (38 kg)
Warranty	3 years laser source, 2 years system

**LASER DETAILS**

Laser Source	High power stabilized HeNe
Class	IIIa (meets 3R ANSI requirements)
Wavelength	633 nm
Frequency Stabilization	<0.0001 nm
Output Power	>3 mW
Coherence Length	>100 m

**UTILITY REQUIREMENTS**

Power	100 to 240 VAC, 50/60 Hz
Compressed Air	80 psi (5.5 bar); dry and filtered source (required for optional vibration isolation)



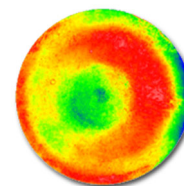
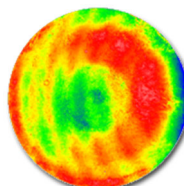
**OPERATIONAL ENVIRONMENT<sup>(1)</sup>**

Temperature	15 to 30°C (59 to 86°F)
Rate of Temp. Change	<1.0°C per 15 min
Humidity	5 to 95% relative, non-condensing
Vibration Isolation	Not required with QPSI; recommended with PSI acquisition

**PERFORMANCE<sup>(2)</sup>**

RMS Simple Repeatability <sup>3</sup>	<0.06 nm, λ/10,000 (2σ)
RMS Wavefront Repeatability <sup>4</sup>	<0.35 nm, λ/1,800 (mean + 2σ)
Peak Pixel Deviation <sup>5</sup>	<0.5 nm, λ/1,200 (99.5 <sup>th</sup> %)
ITF <sup>6</sup>	4 inch: > 0.7 @ 5.4 cyc/mm 6 inch: > 0.7 @ 3.6 cyc/mm

**Comparison of acquisitions in vibrating cavity**



PSI 13 bucket algorithm

QPSI 5 ms shutter speed

**Notations**

- These parameters outline the conditions under which the system can operate; they do not represent the environmental stability required to meet specified performance.
- Performance qualified with stable temperature set point between 20-23°C.
- RMS Simple Repeatability is defined by 2X the standard deviation of the RMS for 36 sequential measurements (16 averages) of a short 4 inch plano cavity.
- RMS Wavefront Repeatability is defined by the mean RMS difference plus 2X the standard deviation for the differential between all even numbered measurements and a synthetic reference (defined as the average of all odd numbered measurements); 36 sequential measurements (16 averages) form the basis for calculation.
- Peak Pixel Deviation is defined by the 99.5<sup>th</sup> percentile of the pixel-wise standard deviation map for 36 sequential measurements (16 averages); this result measures time varying behavior (or Type A uncertainties).
- Instrument Transfer Function (ITF) defines the spatial resolution capability of the instrument at ½ Nyquist with a short plano cavity.



Distribution in the UK & Ireland



**Lambda Photometrics Limited**  
Lambda House Batford Mill  
Harpenden Herts AL5 5BZ  
United Kingdom

**Characterisation,  
Measurement &  
Analysis**

**E: info@lambdaphoto.co.uk**  
**W: www.lambdaphoto.co.uk**  
**T: +44 (0)1582 764334**  
**F: +44 (0)1582 712084**

Specifications subject to change without prior notice.