

powerful
portable
versatile



index

Special technologies: EDOF - AMR - EDR - FLC - Polarizer	4
Universal range	10
High magnification range	14
Long Working Distance range	18
Special Lighting range	22
High Speed Real Time range	30
Basic range	38
Mobile / Wireless range	40
Dino-Lite Medical range	44
Microscope Eyepiece cameras	50
Accessories	54
Accessories – Professional stands	55
Accessories – Basic stands	58
Accessories – Light & Control	59
Accessories – Photonic Optics	61
Dino-Lite software	62
Dino-Lite software - system integration and SDK	65
User stories	67
Dino-Lite model overview	73



Universal range



High magnification range



Long Working Distance range



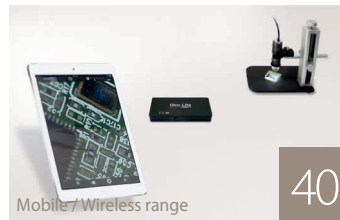
Special Lighting range



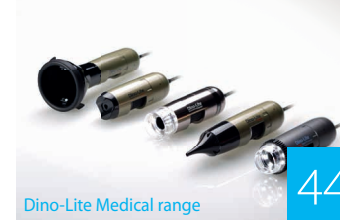
High Speed Real Time range



Basic range



Mobile / Wireless range



Dino-Lite Medical range



Microscope Eyepiece cameras



Accessories



Dino-Lite software



User stories

a powerful and portable solution

Dino-Lite digital microscopes provide a powerful, portable and feature rich solution for microscopic inspection at up to 900x magnification and 5 Megapixel resolution high-quality imaging and optics, feature-rich software and advanced hardware features that set the Dino-Lite range apart from any comparable product. As the inventor of the handheld digital USB microscope, Dino-Lite is now the market leader and industry standard for digital handheld microscopes. Nowadays the Dino-Lite digital microscope is an irreplaceable instrument for thousands of companies and professionals worldwide.

With over 150 models the Dino-Lite range offers multiple connectivity options: USB 2.0, USB 3.0, VGA, High definition, Wireless, as well as specialized illumination, such as ultraviolet or infrared, and numerous magnification ranges. A wide range of stands and accessories completes the product line-up and ensures that the Dino-Lite range offers solutions to meet the needs of the home user through to the most demanding professional.

Small in size, but full of functionality. The Dino-Lite digital microscope is a marvel of technology.

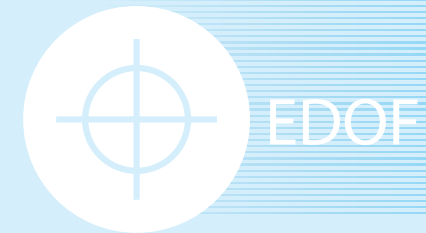
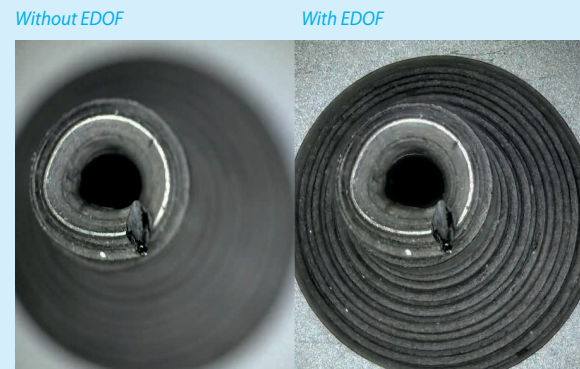


special technologies

EDOF - Extended Depth of Field

Extended Depth of Field, also known as focus stacking, is a digital image processing technique which combines multiple images taken at different focus distances to give a resulting image with a greater depth of field (DOF) than any of the individual source images. Focus stacking can be used in any situation where individual images have a very shallow depth of field. (source: Wikipedia) The EDOF capture mode can take several pictures at different levels of focus and stack them into a clear image automatically with one click of the mouse. The EDOF images maintain the picture quality from its original pictures and can be stored and viewed in the DinoCapture 2.0 software (Windows only).

The following models include EDOF: AM4815xx, AM7915xx, and AM73915xx.



Extended Depth of Field

EDR – Extended Dynamic Range

EDR (Extended Dynamic Range) is an image processing tool exclusive to some of the Dino-Lite Edge models. For surfaces with large variation in brightness, the EDR capture tool can be ideal for capturing a more neutral image of the surface by only a few clicks. The EDR capture mode takes three pictures at different exposure levels (standard, underexposed and overexposed) and stacks them into a clear image automatically with one click of the mouse. The EDR images can be stored and viewed in the Dino-Capture 2.0 software (Windows only).

The following models include EDR: AM4815xx, AM7915xx, and AM73915xx.



Extended Dynamic Range

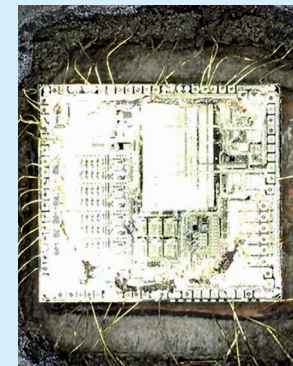
Without EDR



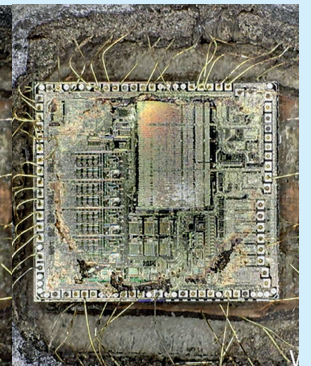
With EDR



Without EDR



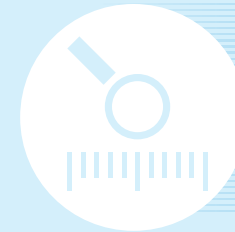
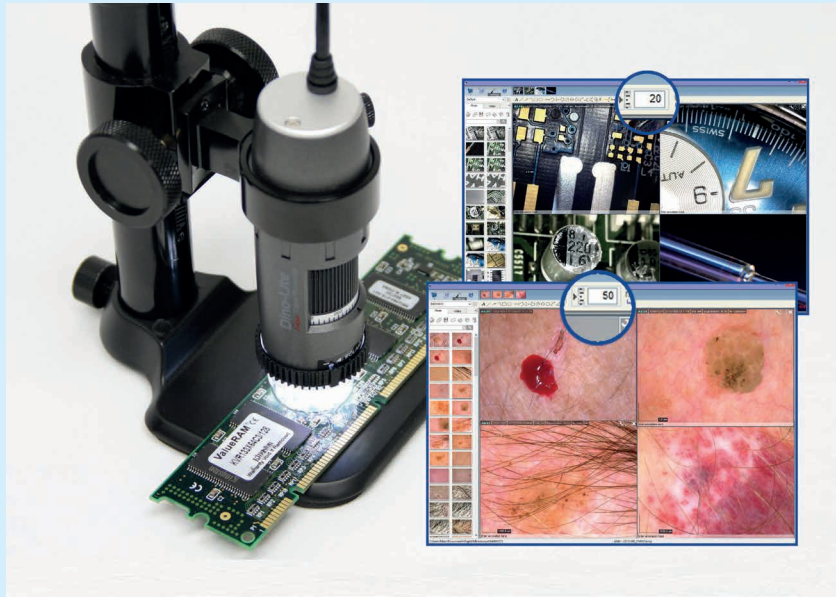
With EDR



AMR Automatic Magnification Reading

The AMR function automatically detects and displays the magnification of the Dino-Lite. The magnification is displayed within the Dino-Lite software and stored with the captured picture. The AMR function simplifies the measuring process and improves the accuracy of the measurement. AMR is recommended when high precision and/or calibrated (calibration is done manually) measurements need to be made.

The following models include AMR: AM4515xx, AM4815xx, AM7515xx, AM7915xx, AM73515XX and AM73915xx



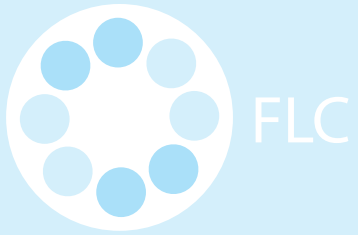
AMR

Automatic Magnification Reading

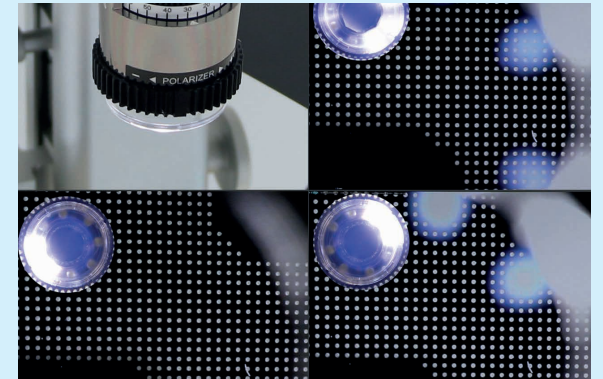
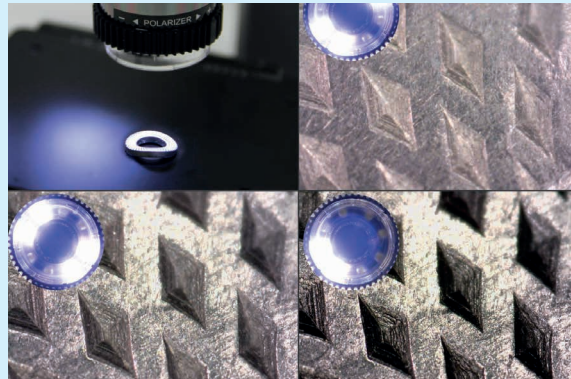
FLC Flexible LED Control

With the Flexible LED Control (FLC) function the Dino-Lite LED's can be controlled and adjusted. The LED's on the Dino-Lite models with the FLC function are divided into four different quadrants which can be adjusted separately. Six levels of illumination can be chosen. The FLC function is useful when objects need to be illuminated from the side or when certain parts of the object need more or less light.

All AM7115xx, AM73xxx, AM7515xx, AM7915xx models include FLC.



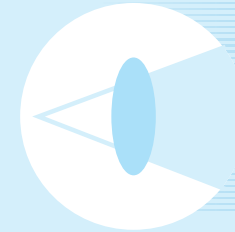
Flexible LED Control



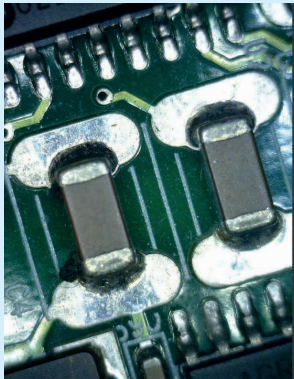
Polarizing filter / polarizer

Many Dino-Lite models offer a built-in polarizing filter. A polarizer is an optical filter that polarizes the light passing through it, which is used for reducing reflections on shiny objects and for improving contrast. The Dino-Lite polarizer can be switched on/off or can be adjusted to offer full or half polarization. A polarizer filter is highly recommended when working with shiny or reflective objects such as metal, plastic, glass, jewelry or electronics, but also for use in dermatology for skin or scalp check.

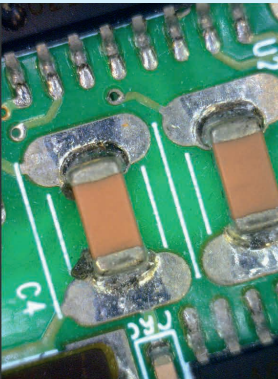
All models that include a "Z" in the product code are equipped with a Polarizer



Without Polarization



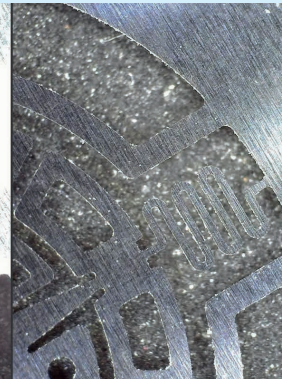
With Polarization



Without Polarization



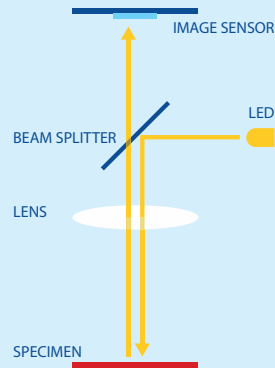
With Polarization



Polarizer anti-reflection



Co-axial lighting

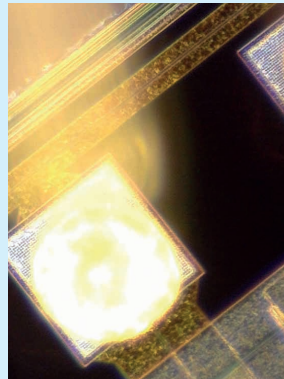


Co-axial lighting

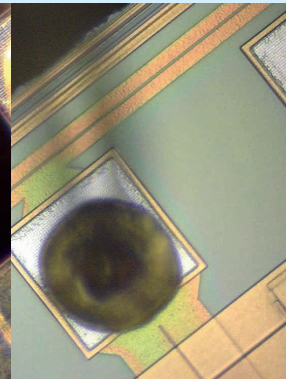
With Coaxial Illumination the light is on the axis of the optical path and is therefore only illuminating the part of the sample that is also seen by the microscope. Inside the Dino-Lite co-axial models there is an LED built-in on the side. This LED shines its light onto a mirror which acts like a beam splitter that projects the light directly onto the sample and also allows the image that is formed to be returned straight up to the Edge sensor. The most commonly used application for coaxial illumination in the semiconductor industry is the quality control and inspection wafer plates. With standard brightfield illumination the structures and overlaying structures are not all visible, while with coaxial illumination these details will appear. Other applications are the inspection of polished and chemically treated metal surfaces, inspection of microchips, microelectronics and many other surfaces that appear flat or without contrast when using brightfield illumination.

The following models include Co-axial lighting: AM7515MT2A/ AM7515MT4A / AM7515MT8A

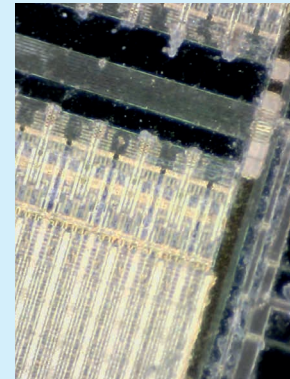
Standard lighting



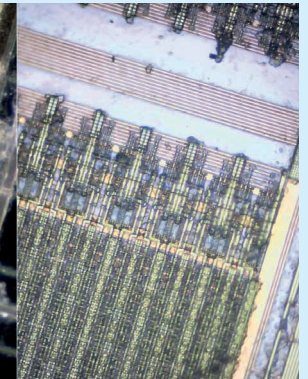
Co-axial illumination



Standard lighting



Coaxial illumination



Dino-Lite universal

More information on www.dino-lite.eu/universal



Dino-Lite universal

The Dino-Lite universal series provides a broad range of products with the highest image quality, as well as very user-friendly software with comprehensive measurement functions, and several unique hard and software features to satisfy the most demanding user. This range consists of Dino-Lite models with a USB connection with a magnification of up to 220 times and an image resolution of 1.3 megapixel or 5 megapixels.

For working with reflective objects, you can choose the models with the built-in polarization filter with adjustable polarization. For the best look and feel and enhanced durability, we offer models of robust metal housing. The Dino-Lite Edge series is a special category within the universal range; the Edge series provide even better image quality and greater flexibility. The high-quality optics provide a very sharp, bright and natural color image with very low aberration and vignetting. The exchangeable caps provide for even more flexibility for use in all kinds of professional applications.

key features

- ▶ magnification of up to 220x
- ▶ 1.3 megapixel or 5 megapixel
- ▶ with or without polarization filter
- ▶ metal housing or composite housing
- ▶ edge series with Extended Depth of Field (EDOF), Extended Dynamic Range (EDR), Flexible LED Control (FLC) and Automatic Magnification Reading (AMR)
- ▶ includes the advanced DinoCapture software for Windows and DinoXcope for MacOS



AM4113xx series



AM41xx/45xx/48xx series



AM4013xx/AM7013xx series



AM7115xx/AM7515xx/AM7915xx series

Dino-Lite universal



- 2

2-year European warranty
- SDK

Free SDK available for integration projects
- Wireless streaming in combination with WF-10 unit
- Regulatory approval: CE, FCC, ROHS
- Included software: DinoCapture 2.0 (Windows), DinoXcope (Mac OS)

MODEL	RESOLUTION	MAGNIFICATION	CONNECTIVITY	LONG WORKING DISTANCE	MEASUREMENT & CALIBRATION	NUMBER OF LEDS	EXCHANGABLE CAPS	POLARIZER	METAL HOUSING	ESD-SAFE	GENERATION	ADDITIONAL FEATURES	PRICE RANGE
UNIVERSAL													
AM4113T	1,3 Megapixel	10 - 70x, 200x	USB 2.0	-	✓	8	-	-	-	-	-	-	€ 200 - 300
AM4013MT	1,3 Megapixel	10 - 70x, 200x	USB 2.0	-	✓	8	-	-	✓	✓	-	-	€ 400 - 500
AM4113ZT	1,3 Megapixel	10 - 70x, 200x	USB 2.0	-	✓	8	-	✓	-	-	-	-	€ 300 - 400
AM4013MZT	1,3 Megapixel	10 - 70x, 200x	USB 2.0	-	✓	8	-	✓	✓	✓	-	-	€ 400 - 500
AM4115T	1,3 Megapixel	20 - 220x	USB 2.0	-	✓	8	✓	-	-	-	Edge	-	€ 400 - 500
AM4115ZT	1,3 Megapixel	20 - 220x	USB 2.0	-	✓	8	✓	✓	-	-	Edge	-	€ 500 - 600
AM4115TW	1,3 Megapixel	10 - 50x	USB 2.0	-	✓	8	✓	-	-	-	Edge	MACRO ZOOM	€ 400 - 500
AM4115ZTW	1,3 Megapixel	10 - 50x	USB 2.0	-	✓	8	✓	✓	-	-	Edge	MACRO ZOOM	€ 500 - 600
AM4515T	1,3 Megapixel	20 - 220x	USB 2.0	-	✓	8	✓	-	-	-	Edge	AMR	€ 400 - 500
AM4515ZT	1,3 Megapixel	20 - 220x	USB 2.0	-	✓	8	✓	✓	-	-	Edge	AMR	€ 500 - 600
AM4815T	1,3 Megapixel	20 - 220x	USB 2.0	-	✓	8	✓	-	-	-	Edge	EDOF/EDR	€ 600 - 700
AM4815ZT	1,3 Megapixel	20 - 220x	USB 2.0	-	✓	8	✓	✓	-	-	Edge	EDOF/EDR	€ 700 - 800
AM7013MT	5 Megapixel	10 - 70x, 200x	USB 2.0	-	✓	8	-	-	✓	✓	-	-	€ 500 - 600
AM7013MZT	5 Megapixel	10 - 70x, 200x	USB 2.0	-	✓	8	-	✓	✓	✓	-	-	€ 600 - 700
AM7115MZT	5 Megapixel	20 - 220x	USB 2.0	-	✓	8	✓	✓	✓	✓	Edge	FLC	€ 700 - 800
AM7115MZTW	5 Megapixel	10 - 50x	USB 2.0	-	✓	8	✓	✓	✓	✓	Edge	MACRO ZOOM /FLC	€ 800 - 900
AM7515MZT	5 Megapixel	20 - 220x	USB 2.0	-	✓	8	✓	✓	✓	✓	Edge	AMR/FLC	€ 800 - 900
AM7915MZT	5 Megapixel	10 - 220x	USB 2.0	-	✓	8	✓	✓	✓	✓	Edge	AMR/EDOF/EDR/FLC	€ 900 - 1000
AM7515MT2A	5 Megapixel	130 - 220x	USB 2.0	-	✓	9	✓	-	✓	✓	Edge	AMR/FLC/Coaxial	€ 900 - 1000

recommended product

More information on www.dino-lite.eu/am7915mzt

AM7915MZT

Edge Sensor - Polarizer - EDOF - EDR - AMR

With the use of the latest, cutting-edge optics, a brand new 5 megapixel sensor and several special features, the Dino-Lite AM7915MZT is a marvel of technology and the best choice for the high-demanding professional. The Dino-Lite AM7915MZT offers superb image quality and color reproduction in a robust, compact and appealing housing.

With the Extended Dynamic Range (EDR) feature, the details of darker or brighter areas within the object can be revealed by stacking images at different exposure levels. The Extended Depth of Field (EDOF) feature automatically stacks images at different focus level to improve the depth of field on rough or uneven surfaces. With the built-in automatic magnification reading (AMR), measurements can be performed easily and quickly. Because of the built-in polarization filter this model is ideal when working with shiny or reflective objects such as metal, plastic, glass, jewelry, electronics, etc.



5 megapixels
2592 x 1934



usb 2.0



adjustable
~10x - 220x



extended
depth of field
EDOF



extended
dynamic range
EDR



automatic
magnification
reading AMR



flexible LED
control FLC



exchangeable
caps



polarizer
anti-reflection



Dino-Lite high magnification

More information on www.dino-lite.eu/highmagnification



Dino-Lite high magnification

Dino-Lite models within the high magnification series exceed a magnification of 200 times and offer magnifications of 400x, 500x or even a dazzling 900 times. Microscopes in this range offer an image resolution of 1.3 megapixel or 5 megapixel, a USB connection and include the user-friendly DinoCapture software. Models with a built-in polarizer to reduce reflection or models with an extra robust metal housing are also available.

These unique features make the Dino-Lite high magnification models great inspection tools for biomedical and scientific research, material analysis, electronics inspection, or any similar application that requires high magnification, versatility, and mobility.

key features

- ▶ magnification of up to 900x
- ▶ 1.3 megapixel or 5 megapixel
- ▶ with or without a polarization filter
- ▶ metal housing or composite housing
- ▶ Edge series with Flexible LED Control (FLC) and Automatic Magnification Reading (AMR)
- ▶ includes the advanced DinoCapture software for Windows and DinoXcope for MacOS



AM4113T5 series



AM4113ZT4 series



AM4515T5 and T8 series

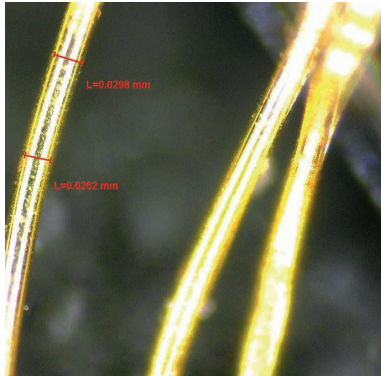
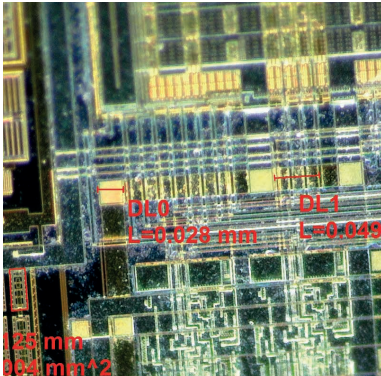
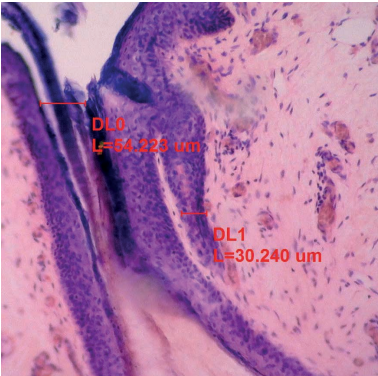


AM4013ZT4/AM7013ZT4 series



AM7515MTx series

Dino-Lite high magnification



2

2-year
European
warranty



Regulatory
approval:
CE, FCC, ROHS

SDK

Free SDK
available for
integration projects



Included software:
DinoCapture 2.0 (Windows),
DinoXcope (Mac OS)



Wireless streaming
in combination
with WF-10 unit

MODEL	RESOLUTION	MAGNIFICATION	CONNECTIVITY	LONG WORKING DISTANCE	MEASUREMENT & CALIBRATION	NUMBER OF LEDS	EXCHANGABLE CAPS	POLARIZER	METAL HOUSING	ESD-SAFE	GENERATION	ADDITIONAL FEATURES	PRICE RANGE
HIGH MAGNIFICATION													
AM4113ZT4	1,3 Megapixel	400 - 470x	USB 2.0	-	✓	8	-	✓	-	-	-	-	€ 300 - 400
AM4013MZT4	1,3 Megapixel	400 - 470x	USB 2.0	-	✓	8	-	✓	✓	✓	-	-	€ 500 - 600
AM7013MZT4	5 Megapixel	400 - 470x	USB 2.0	-	✓	8	-	✓	✓	✓	-	-	€ 600 - 700
AM4113T5	1,3 Megapixel	500x	USB 2.0	-	✓	8	-	-	-	-	-	-	€ 300 - 400
AM4013MT5	1,3 Megapixel	500x	USB 2.0	-	✓	8	-	-	✓	✓	-	-	€ 400 - 500
AM4515ZT4	1,3 Megapixel	400 - 470x	USB 2.0	-	✓	8	✓	✓	-	-	Edge	AMR	€ 500 - 600
AM4515T5	1,3 Megapixel	500 - 550x	USB 2.0	-	✓	8	✓	-	-	-	Edge	AMR	€ 500 - 600
AM4515T8	1,3 Megapixel	700 - 900x	USB 2.0	-	✓	8	✓	-	-	-	Edge	AMR	€ 600 - 700
AM7515MT4A	5 Megapixel	415 - 470x	USB 2.0	-	✓	9	✓	-	✓	✓	Edge	AMR/FLC/Coaxial	€ 900 - 1000
AM7515MT8A	5 Megapixel	700 - 900x	USB 2.0	-	✓	9	✓	-	✓	✓	Edge	AMR/FLC/Coaxial	€ 900 - 1000

recommended product

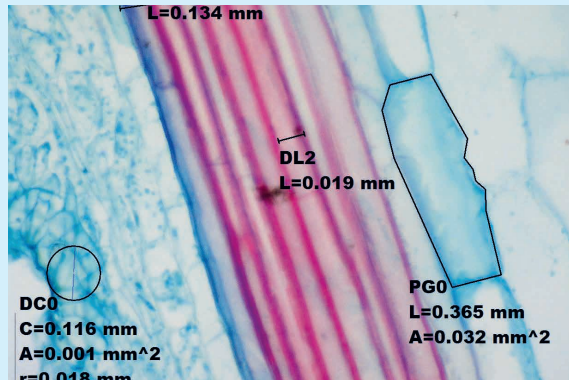
More information on www.dino-lite.eu/am4515t8

AM4515T8 – edge

Edge Sensor - AMR - up to 900x magnification

With up to 900x magnification and high-resolution optics, this high magnification Dino-Lite model reveals details as small as 1.5 micrometers (μm). It also features a greater working distance at high magnification making it easier to watch and move very small objects under the microscope. These unique features make the Dino-Lite AM4515T8 a great inspection tool for biomedical and scientific research, material analysis, electronics inspection, or any similar application that require high magnification, versatility, and mobility.

The Dino-Lite AM4515T8 is bundled with the user-friendly DinoCapture 2.0 software. For this model, it includes functions such as automatic magnification reading (AMR), calibration, measurement, capturing & annotating images, and recording video. Although the AM4515T8 model can be operated handheld, a high-precision stand is recommended. The Dino-Lite RK-10A, for example, is a great add-on, it is a sturdy and stable high-end stand solution constructed of resilient stainless steel and lightweight aluminum and offers a very precise fine-focus adjustment.



usb 2.0



measurement
functionality



adjustable
~700-900x



automatic
magnification
reading AMR



magnification
lock



1,3 megapixels
1280 x 1024



8 white leds
switchable



exchangeable
caps

Dino-Lite long working distance

More information on www.dino-lite.eu/longworkingdistance



Dino-Lite long working distance (LWD)

For tasks where extra distance to the object and a larger field of view is required Dino-Lite offers a series of long working distance microscopes. The extra working distance and larger field of view make this series an ideal solution for tasks such as repair, rework or assembly or for working with bulky objects or fragile objects that cannot be touched.

Microscopes in this range offer an image resolution of 1.3 megapixel or 5 megapixel, a USB connection and include the user-friendly DinoCapture software for Windows or MacOS. Models with a built-in polarizer to reduce reflections or models with an extra robust metal housing are also available. The maximum magnification reaches 140 times which is usually more than enough for this kind of applications.

Specifically designed with the needs of the electronics industry in mind Dino-Lite even offers several ESD safe models with long working distance and a larger field of view.



AM4113xx series



AM41xx/45xx/48xx series



AM4013xx series

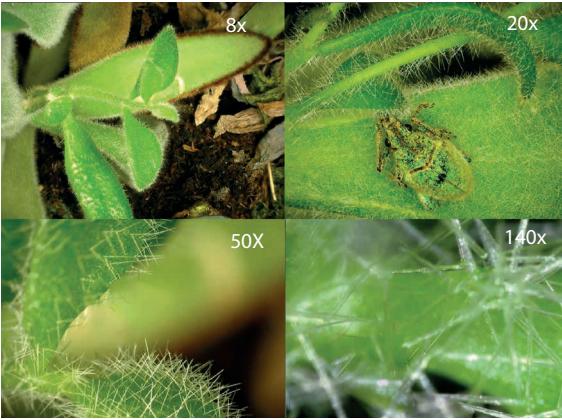


AM7115xx/AM7515xx/AM7915xx series

key features

- ▶ magnifications of 5 to 140 x
- ▶ long working distance of up to 22,5 cm (TF models up to 43 cm)
- ▶ 1.3 megapixel or 5 megapixel
- ▶ with or without a polarization filter
- ▶ metal housing or composite housing
- ▶ edge series with Extended Depth of Field (EDOF), Extended Dynamic Range (EDR), Automatic Magnification Reading (AMR) and Flexible LED Control (FLC)
- ▶ includes the advanced DinoCapture software for Windows and DinoXcope for MacOS

Dino-Lite long working distance



2 2-year European warranty

Regulatory approval: CE, FCC, ROHS

SDK Free SDK available for integration projects

Included software: DinoCapture 2.0 (Windows), DinoXcope (Mac OS)

Wireless streaming in combination with WF-10 unit

MODEL	RESOLUTION	MAGNIFICATION	CONNECTIVITY	LONG WORKING DISTANCE	MEASUREMENT & CALIBRATION	NUMBER OF LEDS	EXCHANGABLE CAPS	POLARIZER	METAL HOUSING	ESD-SAFE	GENERATION	ADDITIONAL FEATURES	PRICE RANGE
LONG WORKING DISTANCE (LWD)													
AM4113TL	1,3 Megapixel	10-90x	USB 2.0	✓	✓	8	-	-	-	-	-	-	€ 300 - 400
AM4013MTL	1,3 Megapixel	10-90x	USB 2.0	✓	✓	8	-	-	✓	✓	-	-	€ 400 - 500
AM4113TL-M40	1,3 Megapixel	5-40x	USB 2.0	✓	✓	8	-	-	-	-	-	macro zoom	€ 300 - 400
AM4113ZTL	1,3 Megapixel	10-90x	USB 2.0	✓	✓	8	-	✓	-	-	-	-	€ 300 - 400
AM4013MZTL	1,3 Megapixel	10-90x	USB 2.0	✓	✓	8	-	✓	✓	✓	-	-	€ 500 - 600
AD4113ZTL	1,3 Megapixel	20-90x	USB 2.0	✓	✓	8	✓	✓	-	-	-	-	€ 400 - 500
AD4013MZTL	1,3 Megapixel	20-90x	USB 2.0	✓	✓	8	✓	✓	✓	✓	-	-	€ 500 - 600
AM4115TL	1,3 Megapixel	10-140x	USB 2.0	✓	✓	8	✓	-	-	-	Edge	-	€ 400 - 500
AM4115ZTL	1,3 Megapixel	10-140x	USB 2.0	✓	✓	8	✓	✓	-	-	Edge	-	€ 500 - 600
AM4515ZTL	1,3 Megapixel	10-140x	USB 2.0	✓	✓	8	✓	✓	-	-	Edge	AMR	€ 500 - 600
AM4815ZTL	1,3 Megapixel	10-140x	USB 2.0	✓	✓	8	✓	✓	-	-	Edge	EDOF/EDR	€ 700 - 800
AM4115TF	1,3 Megapixel	10-70x	USB 2.0	✓	✓	8	✓	-	-	-	Edge	ELWD	€ 500 - 600
AD7013MTL	5 Megapixel	20-90x	USB 2.0	✓	✓	8	✓	-	✓	✓	-	-	€ 600 - 700
AM7115MZTL	5 Megapixel	10-140x	USB 2.0	✓	✓	8	✓	✓	✓	✓	Edge	FLC	€ 700 - 800
AM7515MZTL	5 Megapixel	10-140x	USB 2.0	✓	✓	8	✓	✓	✓	✓	Edge	AMR/FLC	€ 800 - 900
AM7915MZTL	5 Megapixel	10-140x	USB 2.0	✓	✓	8	✓	✓	✓	✓	Edge	AMR/EDOF/EDR/FLC	€ 900 - 1000
AM7115MTF	5 Megapixel	10-70x	USB 2.0	✓	✓	8	✓	-	✓	✓	Edge	ELWD/FLC	€ 700 - 800

recommended product

More information on www.dino-lite.eu/am4815ztl

AM4815ZTL – edge

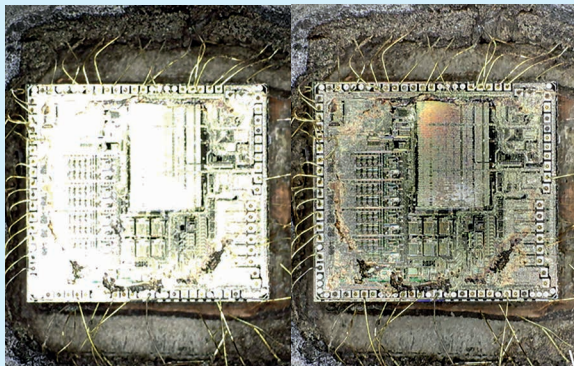
Edge Sensor - Long Working Distance - Polarizer - EDOF - EDR

The AM4815ZTL combines features such as a Polarizer, Long Working Distance, and a magnification range of 10x - 140x, with image processing features such as Extended Depth of Field (EDOF) and Extended Dynamic Range (EDR). With the Extended Dynamic Range (EDR) feature, the details of darker or brighter areas within the object can be revealed by stacking images at different exposure levels. The Extended Depth of Field (EDOF) feature automatically stacks images at different focus level to improve the depth of field on rough or uneven surfaces. Different caps are supplied with the microscope making the Dino-Lite Edge the perfect choice for any professional application.



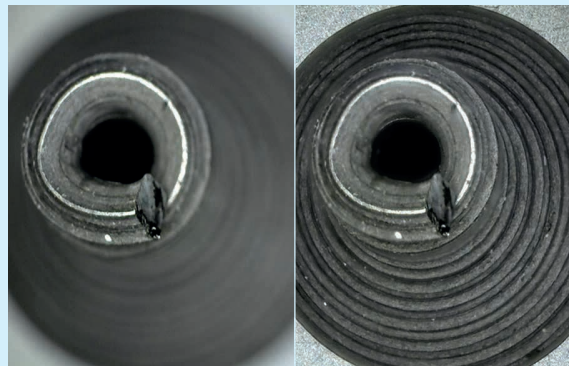
Without EDR

With EDR



Without EDOF

With EDOF



usb 2.0



long working distance
4-15 cm



continuous
~10x - 140x



extended dynamic range
EDR



extended depth of field
EDOF



magnification lock



1,3 megapixels
1280 x 1024



8 white leds
switchable



polarizer
anti-reflection



exchangeable caps

Dino-Lite special lighting

More information on www.dino-lite.eu/speciallighting



Dino-Lite special lighting

Many specialized applications in science, forensics, industry, engineering or the medical field, require special lighting. For many specific applications, Dino-Lite models were created with ultraviolet lighting, infrared lighting, fluorescent lighting or combinations between the different lighting types. Dino-Lite microscopes in this range offer an optical resolution of 1.3 megapixel or 5 megapixel, a USB connection and include the user-friendly DinoCapture or DinoXcope software. Magnification ranges from medium to high (until ~500x) are available.

Models with an extra robust metal housing are part of this range. The widely acclaimed series of Dino-Lite fluorescence microscopes are considered to be the world's smallest fluorescence microscopes. Compared to the traditional fluorescence microscopes with the band-pass type of emission filters, the Dino-Lites Long-pass emission filters provide visibility and sensitivity over a larger range of the fluorescence wavelengths.

Ultraviolet (UV)



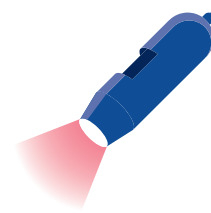
Dino-Lite handheld microscopes with ultraviolet (UV) light or a combination between UV and white light.

Fluorescence



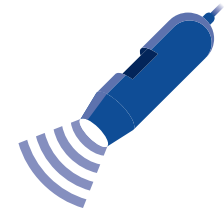
Dino-Lite handheld microscopes with fluorescent LEDs to detect fluorescence from 400nm to 620nm.

Infrared (IR)



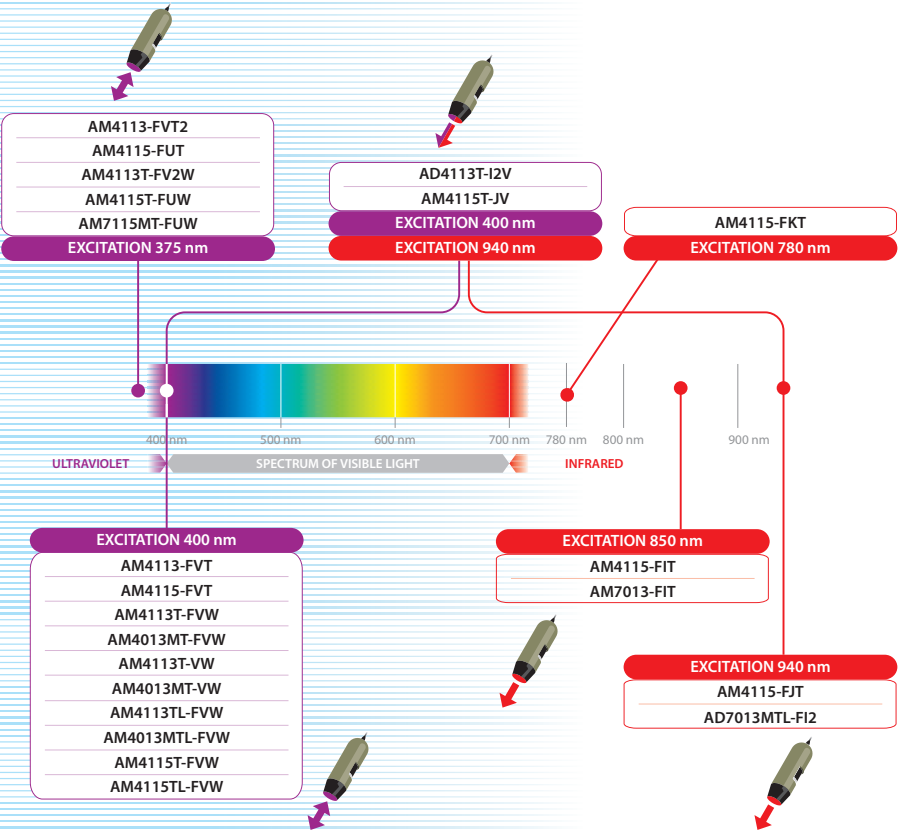
Dino-Lite handheld microscopes with infrared light or combinations between infrared and ultraviolet light.

Stroboscopic light

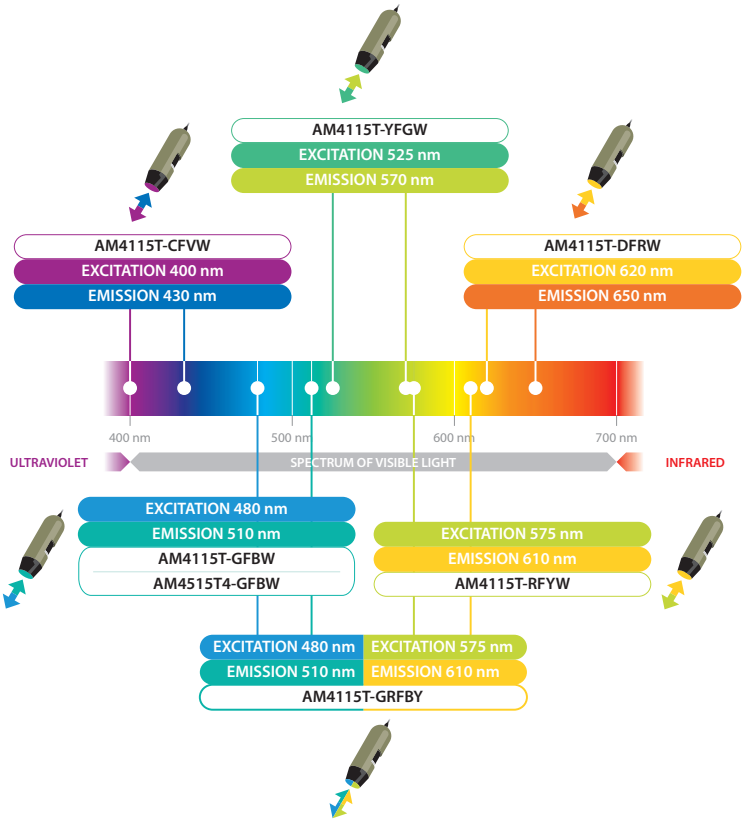


Dino-Lite handheld microscopes with stroboscopic technology to capture fast moving objects.

UV and IR models



Fluorescence models



Dino-Lite special lighting - ultraviolet (UV)

More information on www.dino-lite.eu/ultraviolet



AM4113xx series



AM4115xx series



AM4013xx / AM7013xx series

Dino-Lite handheld microscopes with ultraviolet (UV) light or a combination of UV and white light. Dino-Lite microscopes in this range offer an optical resolution of 1.3 megapixel or 5 megapixel, a USB connection and include the user-friendly DinoCapture and DinoXcope software. Models with an extra robust metal housing are part of this range.



2-year
European
warranty



Regulatory
approval:
CE, FCC, ROHS



Free SDK
available for
integration projects



Included software:
DinoCapture 2.0 (Windows),
DinoXcope (Mac OS)



Wireless streaming
in combination
with WF-10 unit

MODEL	RESOLUTION	MAGNIFICATION	CONNECTIVITY	LONG WORKING DISTANCE	MEASUREMENT & CALIBRATION	NUMBER OF LEDS	TYPE OF LEDS	EMISSION FILTER	EXCHANGABLE CAPS	POLARIZER	METAL HOUSING	ESD-SAFE	GENERATION	PRICE RANGE
SPECIAL LIGHTING ULTRAVIOLET														
AM4113FVT2	1,3 Megapixel	10 - 70x, 200x	USB 2.0	-	✓	4	~375 nm UV	✓	-	-	-	-	-	€ 200 - 300
AM4113FVT	1,3 Megapixel	10 - 70x, 200x	USB 2.0	-	✓	8	390/400 nm UV	✓	-	-	-	-	-	€ 200 - 300
AM4115-FUT	1,3 Megapixel	20 - 220x	USB 2.0	-	✓	4	~375 nm UV	✓	✓	-	-	-	Edge	€ 400 - 500
AM4115-FVT	1,3 Megapixel	20 - 220x	USB 2.0	-	✓	8	390/400 nm UV	✓	✓	-	-	-	Edge	€ 400 - 500
AM4113T-FV2W	1,3 Megapixel	10 - 70x, 200x	USB 2.0	-	✓	4+4	375 nm UV + white	✓	-	-	-	-	-	€ 300 - 400
AM4113T-FVW	1,3 Megapixel	10 - 70x, 200x	USB 2.0	-	✓	4+4	390/400 nm UV + white	✓	-	-	-	-	-	€ 300 - 400
AM4013MT-FVW	1,3 Megapixel	10 - 70x, 200x	USB 2.0	-	✓	4+4	390/400 nm UV + white	✓	-	-	✓	✓	-	€ 400 - 500
AM4113T-VW	1,3 Megapixel	10 - 70x, 200x	USB 2.0	-	✓	4+4	390/400 nm UV + white	-	-	-	-	-	-	€ 300 - 400
AM4013MT-VW	1,3 Megapixel	10 - 70x, 200x	USB 2.0	-	✓	4+4	390/400 nm UV + white	-	-	-	✓	✓	-	€ 400 - 500
AM4113TL-FVW	1,3 Megapixel	10 - 90x	USB 2.0	✓	✓	4+4	390/400 nm UV + white	✓	-	-	-	-	-	€ 300 - 400
AM4013MTL-FVW	1,3 Megapixel	10 - 90x	USB 2.0	✓	✓	4+4	390/400 nm UV + white	✓	-	-	✓	✓	-	€ 500 - 600
AM4115T-FUW	1,3 Megapixel	20 - 220x	USB 2.0	-	✓	4+4	375 nm UV + white	✓	✓	-	-	-	Edge	€ 500 - 600
AM4115T-FVW	1,3 Megapixel	20 - 220x	USB 2.0	-	✓	4+4	390/400 nm UV + white	✓	✓	-	-	-	Edge	€ 500 - 600
AM4115TL-FVW	1,3 Megapixel	10 - 140x	USB 2.0	✓	✓	4+4	390/400 nm UV + white	✓	✓	-	-	-	Edge	€ 500 - 600
AM7115MT-FUW	5 Megapixel	20 - 220x	USB 2.0	-	✓	4+4	375 nm UV + white	✓	✓	-	✓	✓	Edge	€ 700 - 800

Dino-Lite special lighting - fluorescence

More information on www.dino-lite.eu/fluorescence




The widely acclaimed series of Dino-Lite fluorescence microscopes are considered to be the world's smallest fluorescence microscopes. Compared to the traditional fluorescence microscopes with the band-pass type of emission filters, the Dino-Lites long-pass emission filters provide visibility and sensitivity over a larger range of the fluorescence wavelengths. Dino-Lite handheld microscopes with fluorescent LEDs to visualize fluorescence from 400nm to 620nm.

2 2-year European warranty

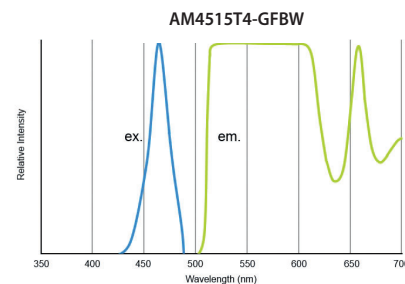
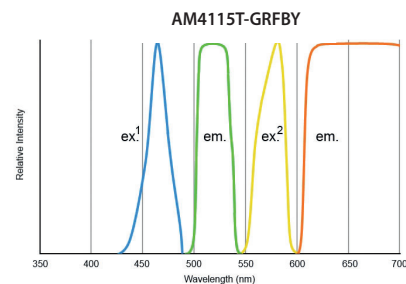
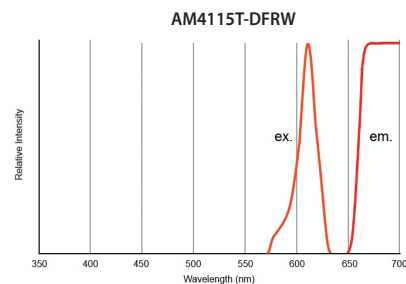
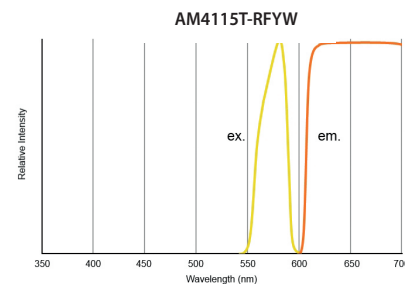
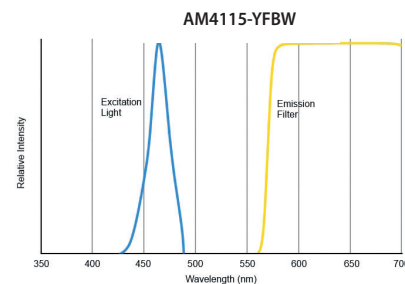
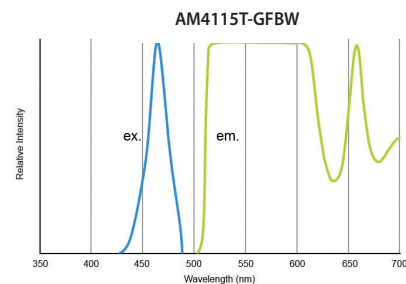
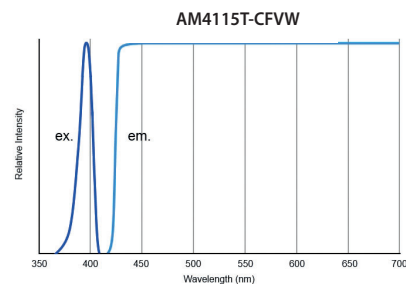
SDK Free SDK available for integration projects

 Wireless streaming in combination with WF-10 unit

 Regulatory approval: CE, FCC, ROHS

 Included software: DinoCapture 2.0 (Windows), DinoXcope (Mac OS)

Dino-Lite special lighting - fluorescence



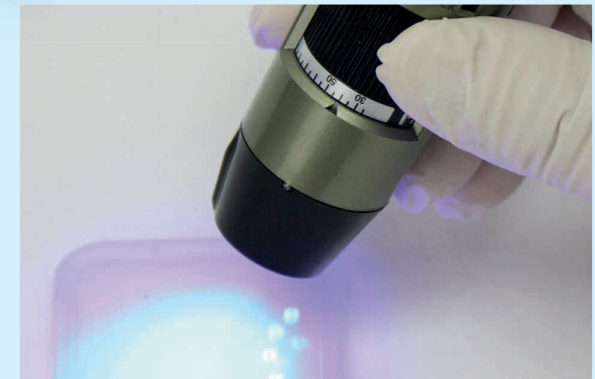
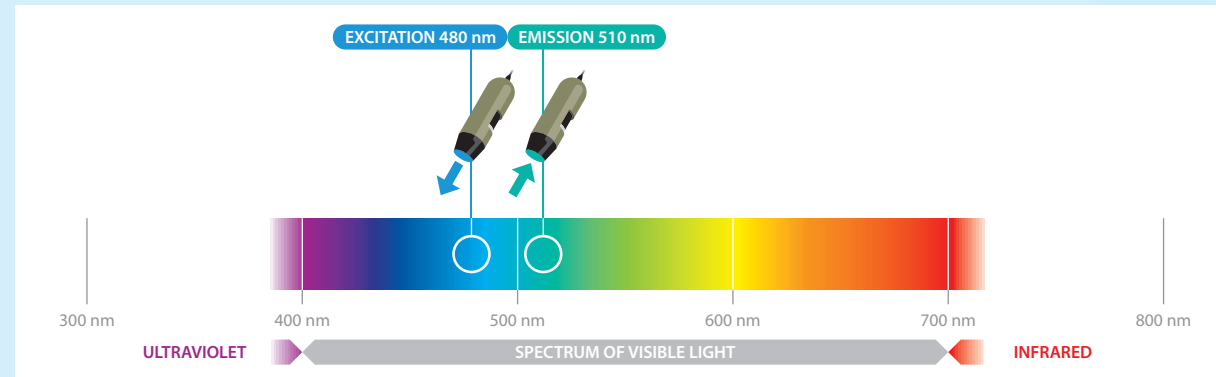
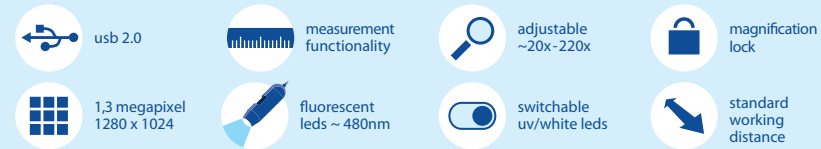
MODEL	RESOLUTION	MAGNIFICATION	CONNECTIVITY	LONG WORKING DISTANCE	MEASUREMENT & CALIBRATION	NUMBER OF LEDS	EXCITATION WAVELENGTH	EMISSION WAVELENGTH	FLUOROPHORE (EXAMPLE)	EXCHANGABLE CAPS	POLARIZER	METAL HOUSING	ESD-SAFE	GENERATION	ADDITIONAL FEATURES	PRICE RANGE
SPECIAL LIGHTING FLUORESCENCE																
AM4115T-CFVW	1,3 Megapixel	20 - 220x	USB 2.0	-	✓	7 FL + 1 White	EX: 400 nm + white	EM: 430 nm LP	DAPI	✓	-	-	-	Edge		€ 600 - 700
AM4115T-GFBW	1,3 Megapixel	20 - 220x	USB 2.0	-	✓	7 FL + 1 White	EX: 480 nm + white	EM: 510 nm LP	GFP, FITC	✓	-	-	-	Edge		€ 600 - 700
AM4115T-YFGW	1,3 Megapixel	20 - 220x	USB 2.0	-	✓	7 FL + 1 White	EX: 525 nm + white	EM: 570 nm LP	Cy3, TRITC	✓	-	-	-	Edge		€ 600 - 700
AM4115T-RFYW	1,3 Megapixel	20 - 220x	USB 2.0	-	✓	7 FL + 1 White	EX: 575 nm + white	EM: 610 nm LP	TxRed, mCherry	✓	-	-	-	Edge		€ 600 - 700
AM4115T-DFRW	1,3 Megapixel	20 - 220x	USB 2.0	-	✓	7 FL + 1 White	EX: 620 nm + white	EM: 650 nm LP	Cy5	✓	-	-	-	Edge		€ 600 - 700
AM4115T-GRFBY	1,3 Megapixel	20 - 220x	USB 2.0	-	✓	4 FL + 4 FL	EX: 480 nm + 575 nm	EM: 510 nm & 610 nm	GFP/FITC & TxRed/mCherry	✓	-	-	-	Edge		€ 700 - 800
AM4515T4-GFBW	1,3 Megapixel	400 - 470x	USB 2.0	-	✓	7 FL + 1 White	EX: 480 nm + white	EM: 510 nm LP	GFP, FITC	✓	-	-	-	Edge	AMR	€ 600 - 700

recommended product More information on www.dino-lite.eu/am4115t-gfbw

AM4115T-GFBW, fluorescence

Edge Sensor - 1 white / 7 FL LEDs - Excitation at 480 and emission from 510nm

The Dino-Lite AM4115T-GFBW digital microscope is optimized for research and viewing fluorescent objects by using blue LEDs. It has a 510 nm emission filter that is designed to observe green fluorescence including but not limited to GFP (green fluorescent protein). Compared to the traditional fluorescence microscope's band-pass type of emission filters, the Dino-Lite's high-pass type emission filter provides visibility and sensitivity over a larger range of the fluorescence wavelength. Green fluorescent objects pop out under the microscope and you can clearly see its green glow. The AM4115T-GFBW has the capability of switching the light source from the blue to white LEDs which is convenient for locating the object and obtaining an easy focus.



case study fluorescence

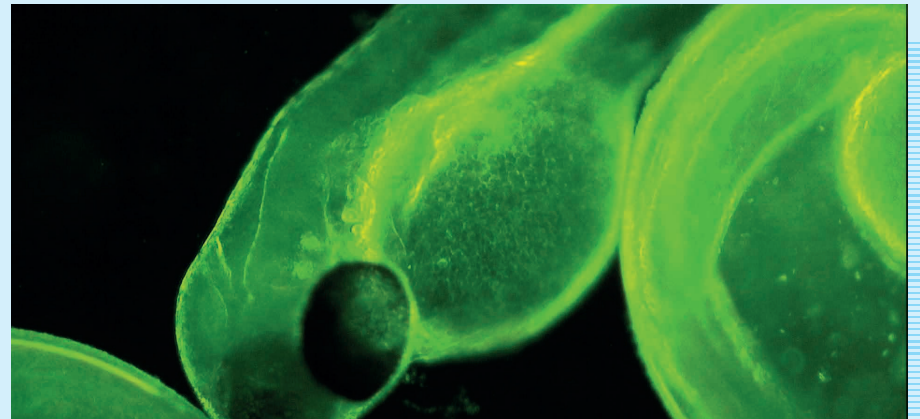
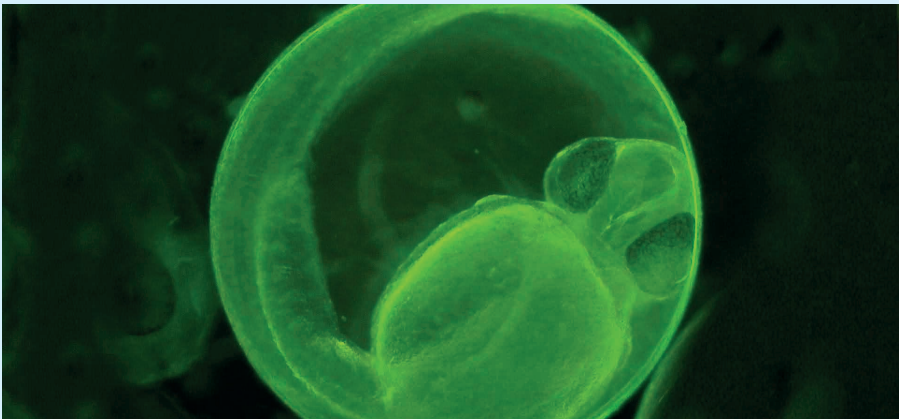
More information on www.dino-lite.eu/zebrafish-research

Cell research made visible with usb fluorescence microscopy

Dino-Lite helps researchers to form an image

Research into life-threatening diseases is of great importance. Miraculously a small striped fish with special light microscopy can play an important role. Professor Yung-Jen Chuang (47) from Taiwan is doing research with zebrafish using Dino-Lite fluorescence microscopes. Within the National Tsing Hua University in Hsinchu, Taiwan, Professor Yung-Jen Chuang runs a laboratory for vascular biology. Vascular biology is the study of our circulatory system in all its forms, from the aorta to the smallest capillary in the brains. Professor Yung-Jen Chuang and his team are particularly interested in the molecular and cellular processes that occur when new blood vessels are formed from the existing blood vessels, a process that is called angiogenesis. The team is also investigating how tissue repair occurs after injury to vital organs such as heart or brains, and examines which reactions influence the blood circulation within a tumor.

The studies also involve functional genomics that aims to identify what specific genes work harder, for instance to speed up regeneration. Obviously Professor Yung-Jen Chuang is leading a team that consists of a large number of researchers, an even greater number of zebrafish and Dino-Lite fluorescence microscopes. Professor Yung-Jen Chuang worked with Dino-Lite to develop the fluorescence digital microscopes: "I am delighted that the Dino-Lite fluorescence microscopes are of good quality and affordable. Moreover, they are easy to use. Thus, we can enable more researchers to work after minimal training, and also enlist various sets of Dino-Lites that we have for educational purposes. It is easy to show the images on a laptop, and we can store both video and still images to study changes in tissue better."



Dino-Lite special lighting - infrared (IR)

More information on www.dino-lite.eu/infrared

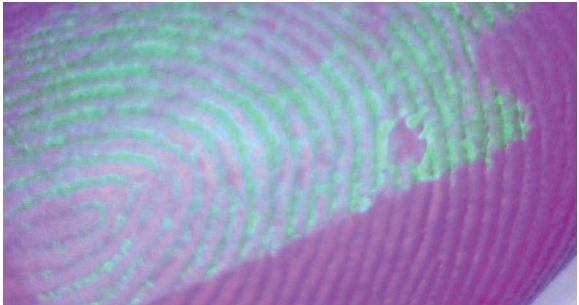


AM4113xx series

AM7013xx series

Dino-Lite handheld microscopes with infrared light or combinations between infrared and ultraviolet light.

- 2** 2-year European warranty
- SDK** Free SDK available for integration projects
- Wireless streaming in combination with WF-10 unit
- Regulatory approval: CE, FCC, ROHS
- Included software: DinoCapture 2.0 (Windows), DinoXcope (Mac OS)



MODEL	RESOLUTION	MAGNIFICATION	CONNECTIVITY	LONG WORKING DISTANCE	MEASUREMENT & CALIBRATION	NUMBER OF LEDS	TYPE OF LEDS	EMISSION FILTER	EXCHANGABLE CAPS	POLARIZER	METAL HOUSING	ESD-SAFE	GENERATION	PRICE RANGE
SPECIAL LIGHTING INFRARED														
AM4115-FKT	1,3 Megapixel	20-220x	USB 2.0	-	✓	8	780 nm IR	✓	✓	-	-	-	Edge	€ 500 - 600
AM4115-FIT	1,3 Megapixel	20-220x	USB 2.0	-	✓	8	850 nm IR	✓	✓	-	-	-	Edge	€ 400 - 500
AM4115-FJT	1,3 Megapixel	20-220x	USB 2.0	-	✓	8	940 nm IR	✓	✓	-	-	-	Edge	€ 400 - 500
AD4113T-I2V	1,3 Megapixel	20-200x	USB 2.0	-	✓	4+4	390/400 nm UV + 940 nm IR	✓	✓	-	-	-	-	€ 300 - 400
AM4115T-JV	1,3 Megapixel	20-220x	USB 2.0	-	✓	4+4	390/400 nm UV + 940 nm IR	✓	✓	-	-	-	Edge	€ 500 - 600
AM7013M-FIT	5 Megapixel	10-70x, 200x	USB 2.0	-	✓	8	850 nm IR	✓	-	-	✓	✓	-	€ 500 - 600
AD7013MTL-FI2	5 Megapixel	20-90x	USB 2.0	✓	✓	8	940 nm IR	✓	✓	-	✓	✓	-	€ 600 - 700

Dino-Lite special lighting - stroboscopic

More information on www.dino-lite.eu/stroboscopic



AM3715TB



AM3713TB

Dino-Lite handheld microscopes with stroboscopic technology make it possible to capture fast moving objects. The Dino-Lite with stroboscopic light feature takes perfect pictures by reducing motion blur, even under higher magnification. The strobomicroscope technology enables you to capture fast moving objects in a very easy and convenient way. It can be used for monitoring production lines in a manufacturing environment, observing living creatures in a laboratory environment or any other application with fast-moving objects.

2

2-year
European
warranty



Regulatory
approval:
CE, FCC, ROHS

SDK

Free SDK
available for
integration projects



Included software:
DinoCapture 2.0 (Windows),
DinoXcope (Mac OS)

MODEL	RESOLUTION	MAGNIFICATION	CONNECTIVITY	LONG WORKING DISTANCE	MEASUREMENT & CALIBRATION	NUMBER OF LEDS	TYPE OF LEDS	FPS	EXCHANGABLE CAPS	POLARIZER	METAL HOUSING	ESD-SAFE	GENERATION	ADDITIONAL FEATURES	PRICE RANGE
SPECIAL LIGHTING STROBOSCOPE															
AM3713TB	VGA (640x480)	10 - 70x, 200x	USB 2.0	-	✓	8	white (stroboscopic)	60 fps	-	-	-	-	-	-	€ 300 - 400
AM3715TB	VGA (640x480)	20 - 220x	USB 2.0	-	✓	8	white (stroboscopic)	30 fps	✓	-	-	-	Edge	external trigger	€ 400 - 500

Dino-Lite high speed

More information on www.dino-lite.eu/highspeed

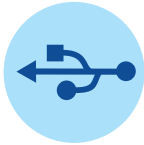


Dino-Lite high speed

For working in environments where you do not want to use a computer, or when a high-speed stream is required, a Dino-Lite with USB 3.0, DVI, VGA or direct TV connection might be the best solution.

The Dino-lite series with a VGA connector can be plugged directly into a computer monitor (VGA screen) and the DVI and TV models can be connected directly to the TV screen. A great advantage of the High-Speed models is that they offer a high frame rate of up to 60 frames per second.

USB 3.0 connection



High Speed models that connect directly to a computer via a USB 3.0 connector.



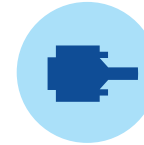
High Definition connection (HD)



High Speed models that connect directly to a computer monitor or a TV screen via a DVI connector.



Direct VGA connection



High Speed models that connect directly to a computer monitor/ VGA screen via a VGA (D-SUB) connector.



Dino-Lite high speed - USB 3.0 connection

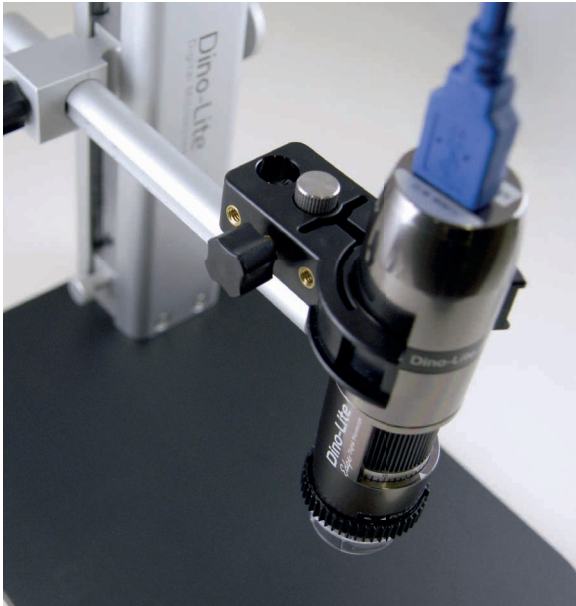
more information on www.dino-lite.eu/usb-3



AM73xxx series

USB 3.0 adds a new transfer mode called “SuperSpeed” (SS) capable of transferring data up to 5Gbits/s (625MB/s). Dino-Lite models with USB 3.0 offer an image transfer speed of up to 45FPS at a 1280 x 960 resolution. SuperSpeed allows users to take advantage of the full power of the Dino-Lite Edge Series optics including improved colour accuracy and image quality.

- 2** 2-year European warranty
- SDK** Free SDK available for integration projects
- Regulatory approval: CE, FCC, ROHS
- Included software: DinoCapture 2.0 (Windows), DinoXcope (Mac OS)



MODEL	RESOLUTION	MAGNIFICATION	CONNECTIVITY	LONG WORKING DISTANCE	MEASUREMENT & CALIBRATION	NUMBER OF LEDS	MAX. FPS*	EXCHANGEABLE CAPS	POLARIZER	METAL HOUSING	ESD-SAFE	GENERATION	ADDITIONAL FEATURES	PRICE RANGE
HIGH SPEED USB 3.0 CONNECTION														
AM73115MZT	5 Megapixel	20-220x	USB 3.0	-	✓	8	45 fps	✓	✓	✓	✓	Edge	FLC	€ 900-1000
AM73115MZTL	5 Megapixel	10-140x	USB 3.0	✓	✓	8	45 fps	✓	✓	✓	✓	Edge	FLC	€ 900-1000
AM73115MTF	5 Megapixel	10-70x	USB 3.0	✓	✓	8	45 fps	✓	-	✓	✓	Edge	ELWD/FLC	€ 900-1000
AM73515MZT	5 Megapixel	20-220x	USB 3.0	-	✓	8	45 fps	✓	✓	✓	✓	Edge	AMR/FLC	€ 900-1000
AM73515MZTL	5 Megapixel	10-140x	USB 3.0	✓	✓	8	45 fps	✓	✓	✓	✓	Edge	AMR/FLC	€ 900-1000
AM73915MZT	5 Megapixel	20-220x	USB 3.0	-	✓	8	45 fps	✓	✓	✓	✓	Edge	EDOF/EDR/AMR/FLC	€ 1100-1200
AM73915MZTL	5 Megapixel	10-140x	USB 3.0	✓	✓	8	45 fps	✓	✓	✓	✓	Edge	EDOF/EDR/AMR/FLC	€ 1100-1200

* maximum frame rate at 1.3MP

Dino-Lite high speed - Direct VGA connection (D-SUB)



AM4116xx/AM4116xx

AM5216xx/AM5216xx



High Speed models that connect directly to a computer monitor/ VGA screen via a VGA (D-SUB) connector. It offers a high frame rate of up to 60 fps at 800 x 600 resolution and has enhanced low light visibility so you can see clearly in any situation.

2 2-year European warranty

Regulatory approval: CE, FCC, ROHS

MODEL	RESOLUTION	MAGNIFICATION	CONNECTIVITY	LONG WORKING DISTANCE	MEASUREMENT & CALIBRATION	NUMBER OF LEDS	MAX. FPS*	EXCHANGEABLE CAPS	POLARIZER	METAL HOUSING	ESD-SAFE	GENERATION	ADDITIONAL FEATURES	PRICE RANGE
HIGH-SPEED VGA CONNECTION														
AM4116T	800x600	10-70x, 200x	VGA (D-Sub)	-	-	8	60 fps	-	-	-	-	-	-	€ 200-300
AM4116TL	800x600	10-90x	VGA (D-Sub)	✓	-	8	60 fps	-	-	-	-	-	-	€ 200-300
AM4116ZT	800x600	10-70x, 200x	VGA (D-Sub)	-	-	8	60 fps	-	✓	-	-	-	-	€ 300-400
AM4116ZTL	800x600	10-90x	VGA (D-Sub)	✓	-	8	60 fps	-	✓	-	-	-	-	€ 300-400
AM5116T	720P	10-70x, 200x	VGA (D-Sub)	-	-	8	60 fps	-	-	-	-	-	Freeze Frame Function	€ 300-400
AM5116ZT	720P	10-70x, 200x	VGA (D-Sub)	-	-	8	60 fps	-	✓	-	-	-	Freeze Frame Function	€ 400-500
AM5116ZTL	720P	10-90x	VGA (D-Sub)	✓	-	8	60 fps	-	✓	-	-	-	Freeze Frame Function	€ 400-500
AM5216T	720P	20-220x	VGA (D-Sub)	-	-	8	60 fps	-	-	-	-	Edge	Freeze Frame Function	€ 400-500
AM5216ZT	720P	20-220x	VGA (D-Sub)	-	-	8	60 fps	✓	✓	-	-	Edge	Freeze Frame Function	€ 500-600
AM5216ZTL	720P	10-140x	VGA (D-Sub)	✓	-	8	60 fps	✓	✓	-	-	Edge	Freeze Frame Function	€ 500-600
AM5216TF	720P	10-70x	VGA (D-Sub)	✓	-	8	60 fps	✓	-	-	-	Edge	Freeze Frame Function/ELWD	€ 500-600

Dino-Lite high speed - high definition connection (DVI)

More information on www.dino-lite.eu/dvi



High Speed models that connect directly to a computer monitor or a TV screen via a DVI connector.

2
2-year
European
warranty

Regulatory
approval:
CE, FCC, ROHS



MODEL	RESOLUTION	MAGNIFICATION	CONNECTIVITY	LONG WORKING DISTANCE	MEASUREMENT & CALIBRATION	NUMBER OF LEDS	MAX. FPS*	EXCHANGEABLE CAPS	POLARIZER	METAL HOUSING	ESD-SAFE	GENERATION	ADDITIONAL FEATURES	PRICE RANGE
HIGH-SPEED DVI CONNECTION														
AM5018MZT	HD 720p	10-70x, 200x	High Definition (DVI)	-	-	8	60 fps	-	✓	✓	✓	-	Freeze Frame Function	€ 600-700
AM5018MZTL	HD 720p	20-90x	High Definition (DVI)	✓	-	8	60 fps	-	✓	✓	✓	-	Freeze Frame Function	€ 600-700
AM5218MZT	HD 720p	20-220x	High Definition (DVI)	-	-	8	60 fps	✓	✓	✓	✓	Edge	Freeze Frame Function	€ 700-800
AM5218MZTL	HD 720p	10-140x	High Definition (DVI)	✓	-	8	60 fps	✓	✓	✓	✓	Edge	Freeze Frame Function	€ 700-800

recommended product

More information on www.dino-lite.eu/am5216ztl









AM5216ZTL

High Speed - Direct VGA Connection - Polarizer - Long Working Distance

The Dino-Lite AM5216ZTL connects directly to a VGA screen via a VGA (D-SUB) connector. It offers a high frame rate of up to 60fps at 1280x720 resolution, resulting in crystal clear images.

Together with the long working distance of up to 15 centimeters the AM5216ZTL is the ideal choice in situations, where real time images are vital, such as working on PCB's or other miniature objects. By tapping the microtouch sensor on the microscope, the image can be frozen for inspection of important details and by pressing the microtouch sensor for 2 seconds the LEDs can be switched on and off. The built-in adjustable polarizer reduces glare and reflection on shiny objects.



-  direct vga connection
-  long working distance 4-15 cm
-  continuous ~10x - 140x
-  high speed
-  magnification lock
-  resolution 1280 x 720 (720p)
-  8 white leds switchable
-  polarizer anti-reflection

Dino-Lite basic

More information on www.dino-lite.eu/basic



Dino-Lite basic

For general purpose applications, where high image resolution and advanced hardware and software features are not strictly necessary, the Dino-Lite basic series is a good choice. These Dino-Lite models are affordable and an easy-to-use, but still have the same durability and quality as the more advanced Dino-Lite product series. A basic version of the proprietary DinoCapture software is included with each Dino-Lite. The magnification of the microscopes goes from 10 to 70x and around 200x. These models provide an economic and easy-to-use solution, mainly for home use and light professional applications.

AM2111

The Dino-Lite AM2111 basic is an excellent choice for hobbyists, schools, kids or any other cost sensitive application.

AM3113T

The AM3113T has both the measurement functions and the Microtouch button to capture pictures directly from the Dino-Lite. The improved image sensor provides a high quality image with very natural colors and it also offers a high refresh rate for better real time images. It is an affordable solution for industrial, scientific and business use.



AM2111

AM3113T



2-year
European
warranty



Regulatory
approval:
CE, FCC, ROHS



Free SDK
available for
integration projects



Included software:
DinoCapture 2.0 (Windows),
DinoXcope (Mac OS)

MODEL	RESOLUTION	MAGNIFICATION	CONNECTIVITY	LONG WORKING DISTANCE	MEASUREMENT & CALIBRATION	NUMBER OF LEDS	EXCHANGABLE CAPS	POLARIZER	METAL HOUSING	ESD-SAFE	GENERATION	ADDITIONAL FEATURES	PRICE RANGE
BASIC													
AM2111	VGA (640x480)	10 - 70x, 200x	USB 2.0	-	-	4	-	-	-	-	-	-	€ 100 - 200
AM3113T	VGA (640x480)	10 - 70x, 200x	USB 2.0	-	✓	8	-	-	-	-	-	-	€ 100 - 200

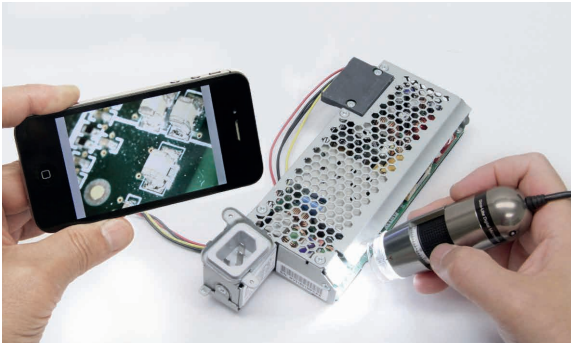
Dino-Lite mobile / wireless



Dino-Lite mobile / wireless wifi streamer

More information on www.dino-lite.eu/wifistreamer

Use your Dino-Lite digital microscope wirelessly with an ipad, iphone, or other mobile device. The WF-10 WiFi Streamer allows Dino-Lite USB models to be used wirelessly in connection with an app or through a web browser on any tablet, smartphone, or computer. The WiFi Streamer is ideal for field work or presentations. Stream from one Dino-Lite to multiple devices. The WF-10 has a built-in battery and can be used anywhere to create a WiFi signal for streaming the Dino-Lite live images.



Dino-Lite mobile/ Android and Windows

Connect your Dino-Lite Directly to your Android or Windows device.



ANDROID

Connect your Dino-Lite directly to selected Android devices.

- ▶ Connect to USB micro / USB-C port
- ▶ Official Dino-Lite Android app available in Google play store
- ▶ No “root” access required
- ▶ Control the LED’s and exposure settings with the DinoDirect app



WINDOWS

Connect your Dino-Lite directly to a Windows 10 tablet.

- ▶ Windows 10 allows compatible Dino-Lites to connect directly via USB 2.0 with the DinoCapture software
- ▶ Use built-in drivers and the native camera app to perform inspections
- ▶ No additional equipment or power source required



Dino-Lite medical

More information on www.dino-lite.eu/medical



Dino-Lite medical

Dino-Lite

Digital Microscope Medical

Dino-Lite digital microscopes have already proven their worth across the world. Many different professionals use any of the more than 150 different model Dino-Lites every day. All models are easy to use, versatile and dedicated to their daily task. Dino-Lite has become an indispensable tool for many people.

The healthcare models have the features of the general Dino-Lite models like the built-in LED lights and the possibility to store images and video on the computer, but also the specially designed caps for each application and the availability of a polarization filter on some models. All Dino-Lite's receive power through the USB port which makes them independent of batteries.



Dino-Lite USB microscopes. For specialists.

All models in this product range are certified according to the Medical Device Directive 93/42/EEC modified 2007/47/EC.

Dino-Lite DermaScope®

With the Dino-Lite DermaScope® a new generation of compact and affordable dermatoscopes has seen the light. These handy, easy-to-use USB digital microscopes can be quickly deployed and used to create sharp and clear photos and videos of a wide variety of skin problems without pain or long waiting times for the patient.

All Dino-Lite DermaScopes have a built-in adjustable polarizer that reduces the gloss effects of the skin. This allows better imaging of the skin layers, lesions and nevi. The DermaScope supports the use of water or oil, but this is not always necessary.










available models:

DermaScope Polarizer MEDL4DW

-  1,3 megapixel
1280 x 1024
-  measurement
functionality
-  adjustable
~10x - 50x
-  8 white leds
switchable
-  polarizer
anti-reflection
-  magnification
lock
-  exchangeable
caps
-  usb 2.0
-  macrozoom
fov & dof









DermaScope Polarizer 200x MEDL4DM

-  1,3 megapixel
1280 x 1024
-  measurement
functionality
-  adjustable
~10 - 50x, 200x
-  8 white leds
switchable
-  polarizer
anti-reflection
-  magnification
lock
-  usb 2.0

DermaScope Polarizer HR MEDL7DW

-  5 megapixel
2592 x 1944
-  measurement
functionality
-  adjustable
~10x - 50x
-  8 white leds
switchable
-  polarizer
anti-reflection
-  metal
housing
-  exchangeable
caps
-  usb 2.0
-  macrozoom
fov & dof
-  magnification
lock

DermaScope Polarizer HR 200x MEDL7DM

-  5 megapixel
2592 x 1944
-  measurement
functionality
-  adjustable
~10 - 70x, 200x
-  8 white leds
switchable
-  polarizer
anti-reflection
-  metal
housing
-  usb 2.0
-  magnification
lock

More information on: www.dino-lite.eu/dermascope

Dino-Lite TrichoScope

The Dino-Lite TrichoScope is a perfect tool for trichoscopy, as the digital microscope is a great tool to study the scalp, hair shaft and the hair itself in detail.

The images made with the TrichoScope can help the specialists to recognize the skin or hair problems and diseases and decide on the treatment method and resources or to prescribe the right medication.



available models:

TrichoScope Polarizer MEDL4HM

- 1,3 megapixel
1280 x 1024
- measurement
functionality
- adjustable
~10x - 70, 200x
- 8 white leds
switchable
- polarizer
anti-reflection
- usb 2.0
- magnification
lock

TrichoScope Polarizer HR MEDL7HM

- 5 megapixel
2592 x 1944
- measurement
functionality
- adjustable
~10-70x, 200x
- 8 white leds
switchable
- polarizer
anti-reflection
- metal
housing
- usb 2.0
- magnification
lock

TrichoScope UV MEDL4HVW

- 1,3 megapixel
1280 x 1024
- measurement
functionality
- adjustable
~10 - 70x, 200x
- 4 + 4 UV leds
switchable
- uv leds
390 ~ 400nm
- usb 2.0
- magnification
lock

TrichoScope Basic MEDL3H

- VGA resolution
640 x 480
- usb 2.0
- adjustable
~20x - 30x
- 4 UV leds
non-switchable

Dino-Lite EarScope

The Dino-Lite EarScope is a digital Otoscope that is easy to use and will be very helpful in general practice, in Audiology and for ear, nose and throat specialists. With the EarScope you can easily inspect and photograph the ear canal, the ear drum and the outer ear.







All Dino-Lite EarScopes have a USB connection and function independent of batteries. Therefore the EarScope is always ready for use. The image can be viewed on a computer screen to simplify diagnosis simplifies and also allows the patient to watch the images as well.









More information on: www.dino-lite.eu/earscope

available models:

EarScope Pro MEDL4E

-  1,3 megapixel
1280 x 1024
-  measurement
functionality
-  adjustable
~50x - 90x
-  8 white leds
switchable
-  usb 2.0
-  magnification
lock

EarScope Pneumatic MEDL4EP

-  1,3 megapixel
1280 x 1024
-  measurement
functionality
-  adjustable
~50x - 90x
-  8 white leds
switchable
-  usb 2.0
-  magnification
lock

-  pneumatic

EarScope Basic MEDL3E

-  VGA RESOLUTION
640 x 480
-  adjustable
~20x - 30x
-  4 white leds
non-switchable
-  usb 2.0







Dino-Lite CapillaryScope

The Dino-Lite CapillaryScope can show the capillaries in high magnification, as well as the decrease in capillaries, knot formation in capillaries and bleeding. With this information doctors can diagnose the condition of the blood vessels in the rest of the body. Capillaroscopy of the cuticle can demonstrate, for example, scleroderma or dermatomyositis.




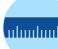





available models:

CapillaryScope 500 MEDL4N5


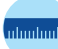





-  1,3 megapixel
1280 x 1024
-  measurement
functionality
-  fixed ~500x
-  8 white leds
switchable
-  usb 2.0
-  magnification
lock

Dino-Lite medical

CapillaryScope 500 Pro MEDL4N5 Pro

-  1,3 megapixel
1280 x 1024
-  measurement
functionality
-  fixed ~500x
-  8 white leds
switchable
-  usb 2.0
-  magnification
lock
-  polarizer
anti-reflection

CapillaryScope 200 Pro MEDL4N Pro

-  1,3 megapixel
1280 x 1024
-  measurement
functionality
-  adjustable
~10x - 200x
-  8 white leds
switchable
-  usb 2.0
-  magnification
lock
-  polarizer
anti-reflection

More information on: www.dino-lite.eu/capillaryscope

Dino-Lite IriScope

The Dino-Lite IriScope is handy, easy to use and a valuable tool for every medical practice. You can make razor-sharp images of the Iris with the magnification of 10-20 times that allows you to see details that can hardly be seen by the naked eye.


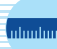



IriScope pictures can have a resolution of up to 1,3 megapixel and the specially designed front cap can be placed on the eye socket to get the right distance for a perfect picture. The IriScope has its own built-in LED's met two different colours, white and yellow. LED's provide better images of dark irises. The images have a maximum resolution of 1.3 Megapixel.



More information on: www.dino-lite.eu/iriscopes

available models:

IriScope MEDL4R

-  1,3 megapixel
1280 x 1024
-  measurement
functionality
-  adjustable
~10x - 20x
-  8 white/yellow leds
switchable
-  usb 2.0

For detailed information on Dino-Lite medical products visit dino-lite.eu/medical or request the Dino-Lite medical brochure.

Dino-Eye eyepiece cameras

More information on www.dino-lite.eu/dinoeye



Dino-Eye eyepiece cameras

With the DinoEye eyepiece cameras you can turn your conventional microscope into a digital microscope. You can easily replace the ocular (eyepiece) of your non-digital microscope with the DinoEye eyepiece and connect it via USB to your computer. With the included proprietary DinoCapture software you have a professional software environment for image or video processing, including calibrated measurement features.



MODEL	RESOLUTION	BUILT-IN MAGNIFICATION	CONNECTIVITY	MEASUREMENT & CALIBRATION	MOUNTING TYPE	OCULAR TUBE DIAMETER	GENERATION	ADDITIONAL FEATURES	PRICE RANGE
EYEPIECE CAMERA'S									
AM4023	1,3 Megapixel	✓	USB 2.0	✓	inside ocular tube	23 mm	-	-	€ 100 - 200
AM4023X	1,3 Megapixel	✓	USB 2.0	✓	inside ocular tube	23,30 & 30,5 mm	-	-	€ 200 - 300
AM4023U	1,3 Megapixel	✓	USB 2.0	✓	over ocular	up to 36 mm	-	-	€ 200 - 300
AM4025X	1,3 Megapixel	✓	USB 2.0	✓	inside ocular tube & c-mount	23,30 & 30,5 mm	Edge	manual EDOF	€ 300 - 400
AM7025X	5 Megapixel	✓	USB 2.0	✓	inside ocular tube & c-mount	23,30 & 30,5 mm	Edge	manual EDOF	€ 400 - 500

Dino-Eye eyepiece cameras

More information on: www.dino-lite.eu/dinoeyebasic



AM4023

The AM4023 fits into 23mm oculars.

- usb 2.0
- measurement functionality
- 1,3 megapixel 1280 x 1024
- fits 23mm oculars



AM4023X

The AM4023X has different adapters to fit microscopes with 23, 30 or 30,5 mm eyepieces.

- usb 2.0
- measurement functionality
- 1,3 megapixel 1280 x 1024
- fits 23, 30, 30,5 mm oculars



AM4023U

The AM4023U is a universal eyepiece version that fits over existing oculars up to 36 mm.

- usb 2.0
- measurement functionality
- 1,3 megapixel 1280 x 1024
- fits over oculars up to 36 mm



AM4025X

The AM4025X has different adapters to fit microscopes with 23, 30 or 30,5 mm eyepieces. Or it can be mounted to optical devices with a C-mount adapter.

- usb 2.0
- measurement functionality
- 1,3 megapixel 1280 x 1024
- fits 23, 30, 30,5 mm oculars
- connects to c-mount

Dino-Eye eyepiece cameras - HR 5 megapixel

More information on: www.dino-lite.eu/dinoeyehr



AM7025X

The DinoEye Edge 5MP eyepiece camera provides superior image quality and true colour reproduction



usb 2.0



measurement
functionality



5 megapixel
2592 x 1944



connects
to c-mount



fits
23, 30, 30,5 mm
oculars



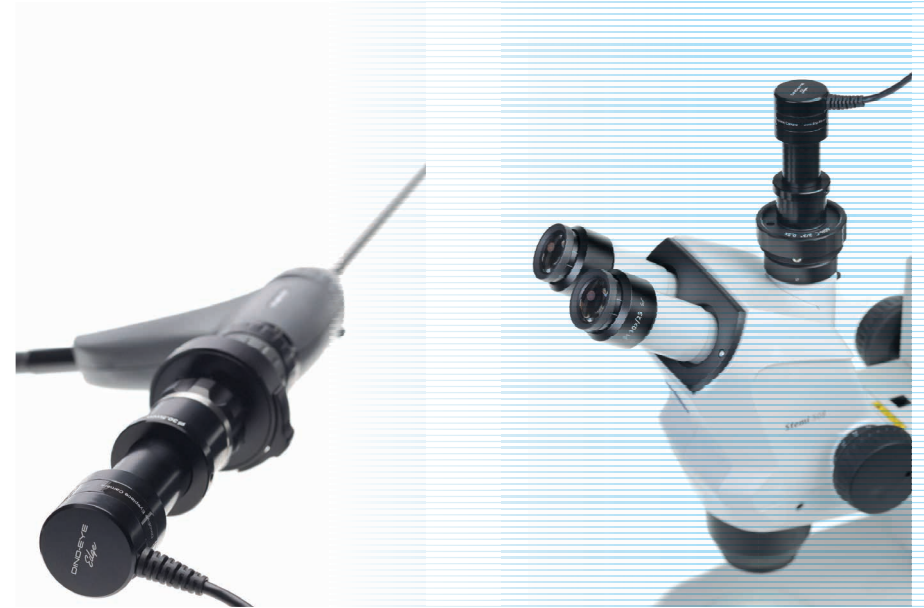
2-year
European
warranty



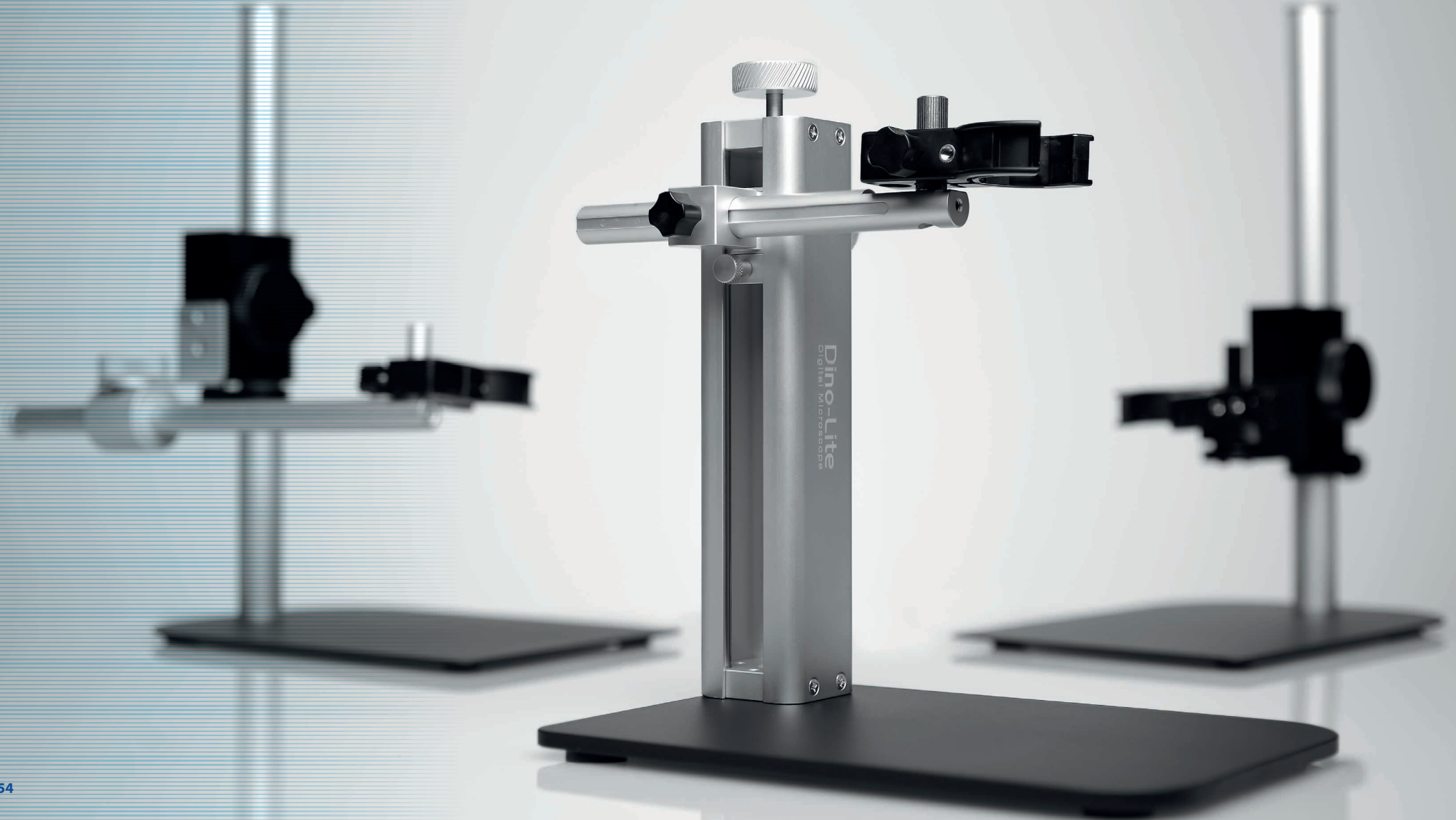
Included software:
DinoCapture 2.0 (Windows),
DinoXcope (Mac OS)



Regulatory
approval:
CE, FCC, ROHS



Dino-Lite accessories



Dino-Lite accessories - professional stands

More information on: www.dino-lite.eu/professionalstands

A sturdy and reliable stand solution is a must-have for your high precision Dino-Lite digital microscope. A broad range of stands, caps, microscope tables and other accessories is offered. From affordable basic stands to a square metal base column stand. Or from an advanced XY table to a USB powered backlight. All original Dino-Lite accessories are made at the same high quality design and construction level.



RK-10A

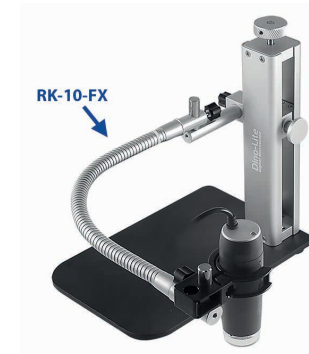
A sturdy and high-end professional stand solution. It is constructed of resilient stainless steel and lightweight aluminum for a precise fine-focus adjustment and a quick release function.



RK-06A

The Dino-Lite RK-06A stand is a sturdy and stable mid-range stand solution that can be used with all Dino-Lite digital microscopes.

Also available: RK-06-AE ESD safe version.



RK-10-FX
Flexible arm extension



RK-10-VX
Vertical arm extension

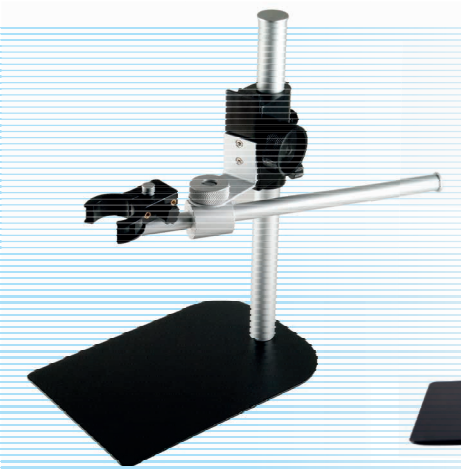


RK-10-PX
XY positioning arm with accurate and smooth adjustment options



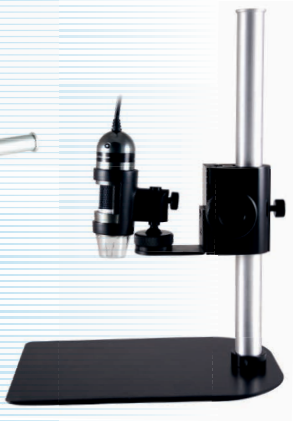
RK-10-EX
Additional horizontal arm (included with RK-10A & RK-06A)

Dino-Lite accesories – professional stands



MS36B
Square metal base with column and support providing several adaptable heights. It has a horizontal beam for additional flexibility.

Also available: MS36BE - ESD safe version.



MS35B
Square metal base with column and support providing several adaptable heights. It is a stable vertical desktop stand to be used with all Dino-Lite microscopes.

Also available: MS35BE - ESD safe version.



MS34B
For precision focus and stable viewing in a compact design. Due to the precision vertical movement of the holster, a steady view can be obtained, even at higher magnifications.



RK-02
A heavy duty gooseneck stand



MS15X
High precision X/Y table



MSAK810
Adjustable flex arm which can be attached to the pole of a MS35B/MS36B



MS52BA2
The MS52BA2 is a combination of the rigid MS52B articulating flex-arm and a desktop base rack



MS-W1
Special stand for cylinder surfaces or to roll on flat surfaces.

recommended product

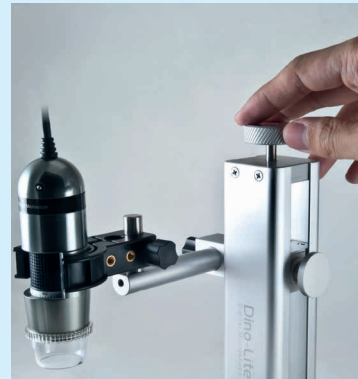
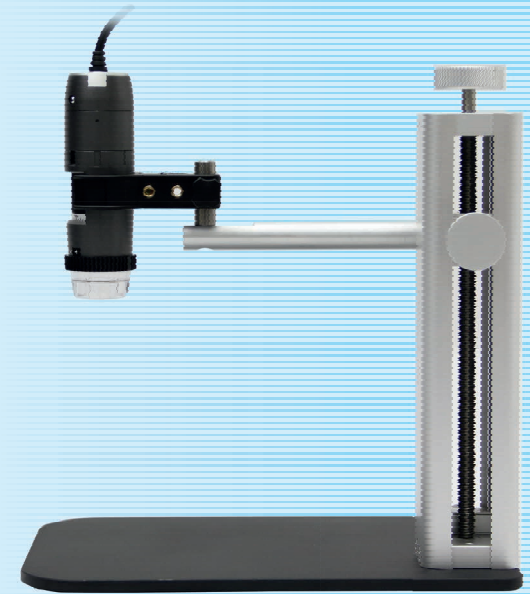
More information on: www.dino-lite.eu/rk10a

RK-10A

High-end stand - 15cm range with 360-degree rotation

A sturdy and stable high-end stand solution. The Dino-Lite RK-10A is a sturdy and stable high-end stand solution that can be used with all the professional Dino-Lite models. It is constructed of resilient stainless steel and lightweight aluminum and offers a very precise fine-focus adjustment as well as a quick release function.

The quick release button allows for fast and convenient vertical movement and the fine-focus adjustment knob is especially useful at high magnification. This model also includes an adjustable safety stop to prevent the microscope from touching the specimen. Its adjustable horizontal arm has a 15cm range with 360-degree rotation and the additional arm (included) increases its effective range to observe larger objects. With these features, the RK-10A is the ideal accessory for precise orientation and positioning for maximum productivity and ease of use in a wide range of environments including industrial, scientific and laboratory settings.



Dino-Lite accessories - basic stands

More information on: www.dino-lite.eu/basicstands

Dino-Lite accessories - basic stands



MS33W

Round metal base with flexible arm and holder for the Dino-Lite.



MS23B

The MS23B is a desktop clamp with flexible gooseneck that can be clamped to a desktop.



MS12C

The MS12C consists of a base unit with two insert adapters.



HD-P1

Universal holder for Basic Dino-Lite models.



HD-M1

Aluminium holder for Dino-Lite.



HL-2

Universal holder for Basic Dino-Lite models.

Dino-Lite accessories - light & control

www.dino-lite.eu/lightcontrol



BL-CDW

Brightfield/Darkfield Backlight Illuminator. The Dino-Lite backlight stage BL-CDW allows two different types of lighting: brightfield and darkfield.



SW-F1

Foot pedal accessory allowing you to take a picture with your foot. No additional software is required, simply plug in the device into your USB port and it is ready to use.



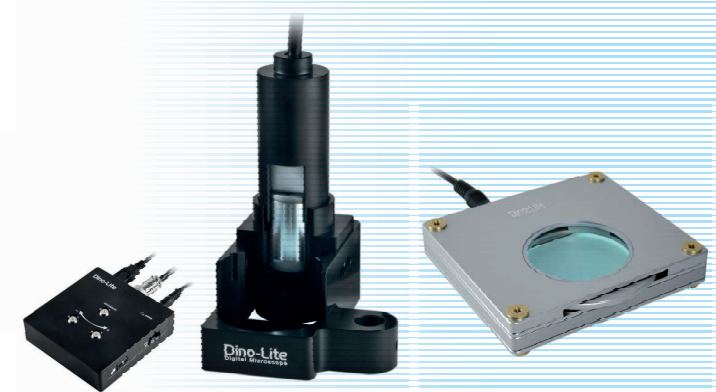
N3C-R

The N3C-R is a passive ring light solution that helps to reveal more details by generating shadow-less illumination (Edge LWD models only)



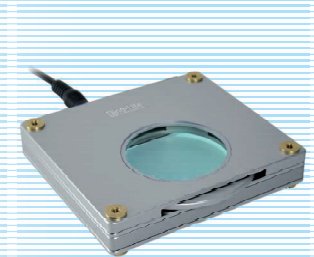
N3C-A

The N3C-A coaxial light cap is a useful accessory for the Dino-Lite Edge models from the Long Working Distance range.



KM-01

The KM-01 can be used to control the Dino-Lite focus wheel without touching the device. This is especially useful when the Dino-Lite needs to be isolated during use.



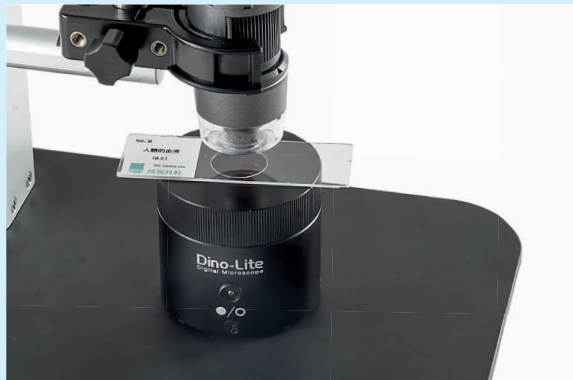
BL-ZW1

USB or DC powered backlight with a built in, freely rotatable polarizer.

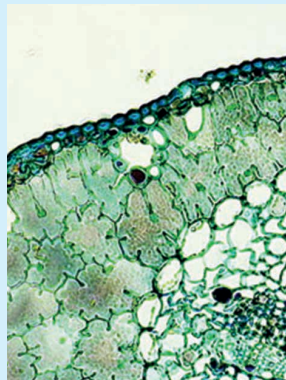
recommended product More information on: www.dino-lite.eu/bl-cdw

BL-CDW, dark field / bright field backlight

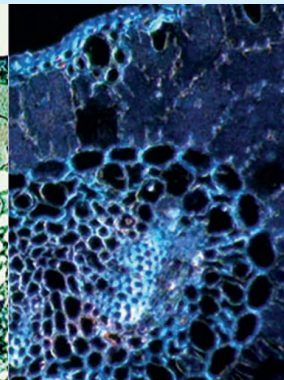
The Dino-Lite backlight stage BL-CDW allows two different types of lighting: brightfield and darkfield. In the brightfield mode, the light is transmitted from below the sample that shows up vividly showing the form and structure of the specimen on a bright background. With darkfield illumination, the transmitted light will not reach the microscope and will therefore not be part of the image. The image will show bright objects on an almost black background. This type of light is not only suitable for prepared specimen but also for live specimen such as flagellum, the pseudopod movement, spirochete and more. Both types of illumination allow for high contrast, clear images and adds a whole new dimension to the Dino-Lite digital handheld microscopes with magnifications over 100x.



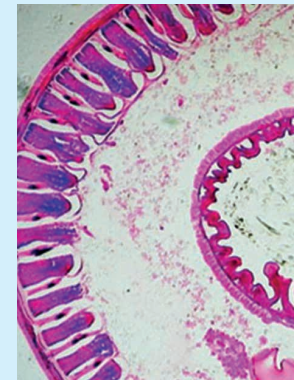
Bright field



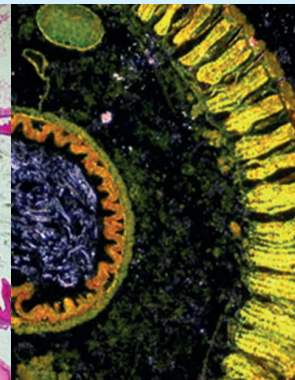
Dark field



Bright field



Dark field



Photonic Optics

More information on: www.dino-lite.eu/photonic

Photonic optics develops high quality LED illumination systems for many different applications, including microscopy. For over 30 years Photonic has been providing modular systems at a good price/performance ratio, making it the ideal partner for Dino-Lite digital microscopes



Photonic PH-Deskset

- ▶ High power LED spot, 2 pieces
- ▶ Flexible arms, 2 individual pieces
- ▶ Individually mounted on a base plate
- ▶ Control unit: brightness and on/off



Photonic PH-F1 Set

- ▶ Fiber optic illumination, LED
- ▶ Fiber optic light guide: Double-arm goose-neck
- ▶ High power cold light source, metal housing
- ▶ Adjustable brightness control



Photonic PH-HPS set

- ▶ High power LED spots
- ▶ 2-arms, flexible
- ▶ MS35/36B stand adapter
- ▶ Control unit: brightness and on/off

Dino-Lite software

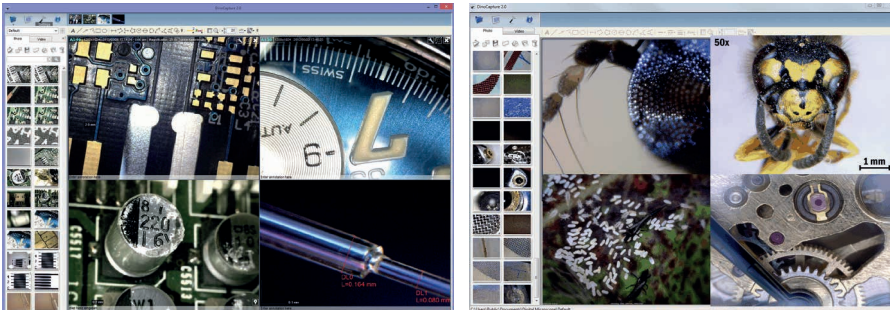


Dino-Lite software - DinoCapture and DinoXcope

A professional, reliable software environment is essential when working with computer equipment like an USB microscope. All Dino-Lite USB products are delivered with an in-house developed software program.

The Dino-Lite software is continuously developed, is free of charge for Dino-Lite users and has an automatic update feature. Dino-Lite software is available for Windows and for MacOS (DinoXcope). DinoCapture software is intuitive, user-friendly and can be used with hardly any training. Free online & e-mail software support is available.

The DinoCapture 2.0 software is available in many languages, such as: English, German, French, Spanish, Chinese, Japanese, Korean, Portuguese, Italian, Russian, Dutch, Greek, Hungarian, Polish, Romanian, Swedish, Finnish, Danish, Czech, Croatian, Norwegian, Turkish, Arabic.



main software features:

- ▶ capturing photographs, videos or time-lapsed videos
- ▶ saving pictures in several formats
- ▶ advanced image processing
- ▶ measurement options like: line, radius, circle, 3-point circle, angle, etc.
- ▶ measurements on captured images or on live images
- ▶ calibration
- ▶ e-mail integration
- ▶ adding notes and markings on images
- ▶ skype integration for real-time on-line sharing with suppliers, customers or colleagues
- ▶ connect multiple Dino-Lite microscopes
- ▶ controlling lighting options from the software
- ▶ IP functionality for remote viewing of microscopic images
- ▶ barcode/QR code recognition functionality
- ▶ GPS integration

Dino-Lite software

Extended Depth of Field (EDOF)

Extended Dynamic Range (EDR)

Advanced measurement options like:
line, radius, circle, 3-point circle, angle, etc.

Calibration functionality

Flexible LED Control (FLC)

Illumination settings

Settings menu

Capturing photographs, videos or time-lapsed videos

Camera adjustment settings such as white balance, auto exposure, etc.

Detailed Excel report including measurement data

Auto-update functionality (free of charge updates)

Magnifier for more precise measurements

Camera Adjustment

Brightness: 128
Contrast: 16
Hue: 0
White Balance: Red: 0, Green: 0, Blue: 0
Saturation: 16
Sharpness: 1
Gamma: 64
Mirror: ☐ Horizontal ☐ Vertical
Others: ☐ Monochrome ☐ Negative
Load the current setting on startup ☐
Export Import Default Cancel OK

AB11

Name	Length(um)	x1	y1	x2	y2
D10	3,508	646	292	646	284
D11	63,25	266	236	409	217
D12	8,943	935	271	931	251

Name	Length(um)	(um^2)	x1	y1	x2	y2
PG0	214,066	12594	769	454	734	503

Name	Angle(deg)
TA0	134,927

Dino-Lite software - system integration + software development kit

System integration is bringing together components into one system ensuring that all elements function together. Visualization with (high) magnification is often the key to provide visual or automatic inspection or analysis. This is exactly what Dino-Lite can help you with when you do not have or do not want to have the expertise needed for developing optical equipment.

With over 10 years of highly specialized knowledge and skills Dino-Lite is seen as the expert in the field of digital optics and digital microscopy. This expertise is being used by many companies around the world that produce, develop and sell high-tech machines and devices and need the best suitable quality inspection tool to integrate into their equipment.

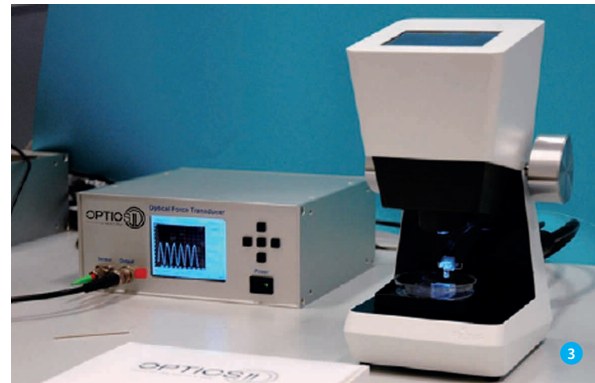
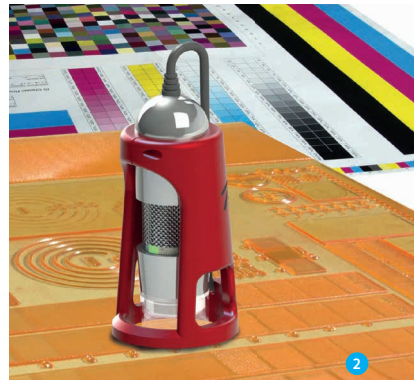
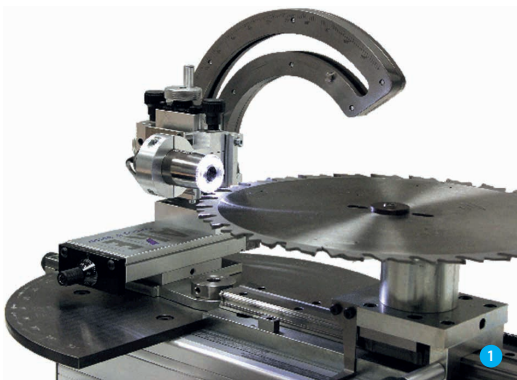
These devices cover a wide variety of applications, Dino-Lite microscopes are integrated in machines for tissue engineering, laser hair removal, drink can seam inspection, machines for material analysis, specialist laboratory equipment and other equipment for quality assurance tasks.

1 RTA Analyser

2 Print quality control system with Dino-Lite integrated

3 Nanoindentation system with a Dino-Lite in use

4 Trichinoscope TriquiVisor with integrated Dino-Lite



Dino-Lite software – system integration + software development kit

Customization and Software Development Kit (SDK)

If you need a Dino-Lite digital microscope but need extra customization or features? From custom LED wavelength to special adapters or accessories, contact us with your ideas and we will work to find a solution for your needs. We can also supply a software development kit (SDK) which allows developers to easily add control of Dino-Lite digital microscopes. It works with any Windows-compatible device and offers complete control over LED and Microtouch on the Dino-Lite. Moreover, it provides simple methods for extracting color, real-time binary image, image comparing, etc. The SDK is available free of charge for Dino-Lite partners and users.

- 5 Service engineer inspection kit with Dino-Lite
- 6 DVS Advantage system with integrated Dino-Lite for visualisation of samples
- 7 Mass spectrometer with ion source

Third party software

All Dino-Lite USB products are supplied with the DinoCapture and DinoXcope software, which was developed in-house and provides an excellent and stable software environment with features that fulfill most application needs. Specific applications or specialized markets often require additional functionality. To stay ahead of the market we are constantly looking to integrate new and specialized software packages with the Dino-Lite digital microscopes. This makes the combination between the Dino-Lite hardware and software even more suitable to the high demands of markets like the industrial or medical sectors.



user story

INTEGRATED PEST MANAGEMENT IN GREENHOUSES

Eric Vereijken is the owner and director of an advanced, 47-hectare tomato cultivation business. His enterprise is distributed across six locations in Brabant and Westland, two regions in the Netherlands that are of international significance for the ornamental plant and produce industries.

Thanks to his many years of experience, Vereijken has optimised the cultivation of tomatoes in greenhouses. However, there was one factor that threatened that success until recently: the gall mite. It is a damaging pest that cannot be seen by the naked eye. However, the effects of the gall mite are plainly visible. Vereijken says “The mite consumes leaves and stems in the greenhouses. You only realise it once the leaves have begun to fade. By then, the gall mite has already been at work for a while”. The tomato farmer noticed that, recently, this pest had appeared in his greenhouses more frequently and in greater numbers.

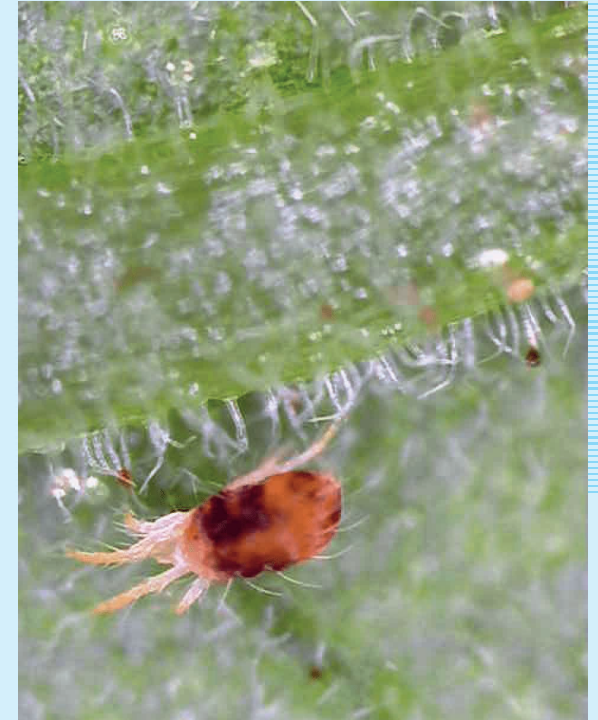


INCREASING RISKS

The risk of realising too late that gall mites have been active continues to grow. If plants are harmed too much, they die and the damage is significant. First, we tried to find the gall mites with a magnifying glass, but they were just too small. After that, I tried putting them under a traditional microscope at the office. That allows you to see them. However, that means you have to pull samples from throughout the greenhouse, with the risk of new infections. The effect turned out to be very limited. It is difficult, if not impossible, to get a good idea of their spread using this method. Furthermore, this approach is extremely time-consuming and, ultimately, expensive as well”.

SUITABLE FOR OTHER PLANTS AS WELL

Eric says “The gall mite is a growing problem for the cultivation of tomatoes under grow lights. It is high time that for an effective tool that can be used to determine the level of infestation and required control efforts quickly and well”. He expects that his fellow cultivators can benefit from handy, mobile, digital Dino-Lite microscopes, just like he did. Dino-Lite can make just as much of a difference for other plants with gall mites and different pests. Dino-Lite appears to be a solution for promptly detecting mites, lice, parasites, spores and other disease carriers in the flower industry as well.



Eric Vereijken says “In our experience, it works quickly and easily for the most part. Not to mention, you can film with this Dino-Lite tool. It is useful for convincingly showing others what is going on.”

user story

IDEAL FOR RESTORATION OF ETHNOGRAPHIC AND ART OBJECTS

Dino-Lite digital microscopes can be a solution for the restoration of archaeological and art objects. This mobile microscope is a useful tool because it makes details visible and is flexible in application. Restorers of the Tropenmuseum recently experienced this. The Tropenmuseum in Amsterdam has restored ten bisj poles. Thanks to the Dino-Lites, the museum visitors were able to observe the achievements of the conservators down to the wood fiber level. The Dino-Lite also proved to be a valuable tool for restoring down to the square time-lapse millimeter.



REVERENCE FOR THE DEAD

Dino-Lite-in-use-during-restoration-at-the-Tropical-Museum- With a height of up to ten meters, the bisj poles were made in the last century by the Asmat, a Papuan people in former Dutch New Guinea. Using these richly decorated nutmeg wood poles, the dead are still being honored. The bisj pole ensures that the soul of the deceased can ascend to the afterlife.



VERY FLEXIBLE

Precision work was required. The human eye cannot discern these subtle nuances for long. One restorer said: "Using the Dino-Lite microscope, we easily noticed the difference between

dirt, overpainting and the original paint layer. We used this microscope before and after cleaning the surface. That was the only way to easily notice the changes. In this area, the Dino-Lite was also very flexible." The time-lapse function was also very handy during the recovery process. It could be used to document how different layers were applied onto the original paint layer.

VIEWING THE WORK ON A SCREEN

Dino-Lite-in-use-during-restoration-at-the-Tropical-Museum The restoration took place in the Lichthal, the central hall of the museum. "In this way, the visitors could easily observe our work. An extra dimension was added because visitors could watch on the screen every detail of what we saw" A museum visitor can't get closer to a restoration process.

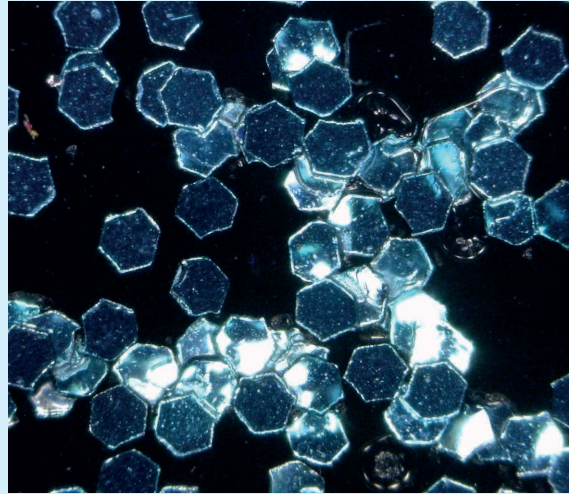
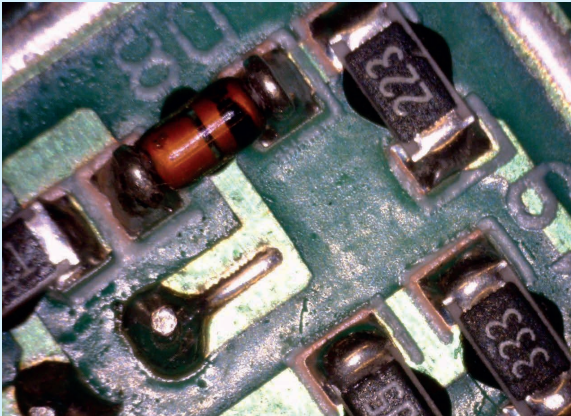
FUTURE RESTORATIONS

For the first time, the restorers of the Tropenmuseum were introduced to the possibilities of the Dino-Lites. They liked to use them, because the enlargements of details and the time-lapse function have contributed to the quality of the restoration work. Because of these experiences, the museum decided that the Dino-Lites can also be used in future restorations. The successful restoration project in the Tropenmuseum showed that the Dino-Lite should be an important instrument for restorers of art and other museum objects.

user story

INDUSTRIAL QUALITY CONTROL

Due to miniaturisation and mass customization, the demands on quality control have increased heavily. Quality control in many industrial fields can benefit greatly from the Dino-Lite digital microscopes. Checking the quality of milling, painting, assembly, manufacturing, tooling has already become daily work for Dino-Lite in thousands of industrial companies. Dino-Lite is easy to use and affordable, but also offers digital storage of images and video's with software options such as measurement, annotation and comparing images.



Highly innovate industries such as automotive, aeronautics, electronics, medical device manufacturers can greatly benefit from Dino-Lite because of the speed and portability of both the regular USB Dino-Lite models, the high speed models or even the Dino-Lite mobile solution with 5 inch portable screen. More traditional industries such as print and paper, paint and lacquer, metal and plastics production, textiles but also foodstuffs, packaging and many more can now use microscopy across the full production chain. In all industries, one can now easily

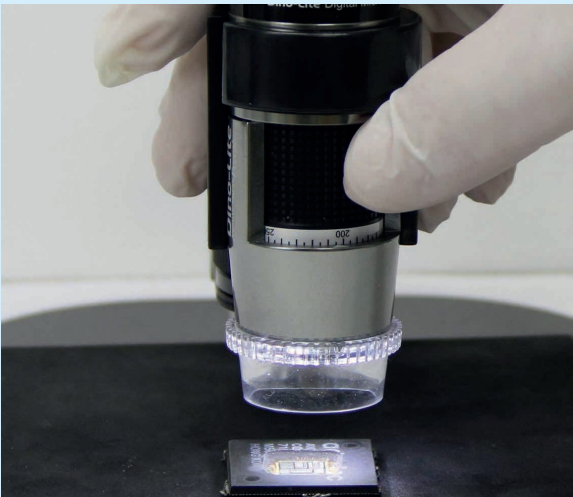
exchange quality information with suppliers and customers but also assure high level product support and problem solving across the supply chain.



Dino-Lite digital microscopes can be implemented in larger industrial systems and integrated into existing software solutions with the Software Development Kit (SDK). Or you can digitize existing microscopy equipment with one of the ocular camera's from the DinoEye eyepiece range that are is software compatible with Dino-Lite. Software partners have made application solutions for specific industries, please check the software menu on this website.

COUNTERFEIT DETECTION

RECOGNIZING PRODUCT FALSIFICATIONS WITH DINO-LITE



Counterfeiting or falsifying products is a global problem that makes many manufacturers suffer. It is not only common for food and non-food, soft drinks, perfumes and pharmaceutical products to the fast moving consumer goods and the automotive industry. Counterfeiting is not just an Asian issue, Europeans can also play this game. It is estimated that more than ten percent of all products are counterfeits, which constitutes a global loss between 200 and 300 billion euro each year. Enough

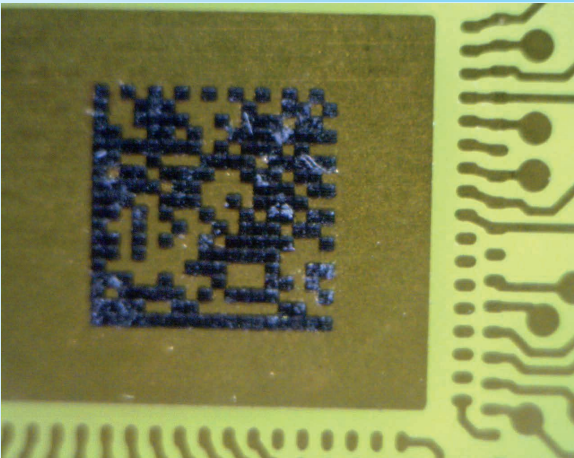
reason to take serious efforts to protect your products against counterfeiting. A leading security company in France works with manufacturers with the help of Dino-Lite digital microscopes and proprietary software that was adapted with the Dino-Lite Software Development Kit (SDK).

Deadly forgery:

This process allows manufacturers to apply an authenticity feature to their products. Their product manager explains: “This can be a code with a dot matrix, but it can also be engraved or even stuck in the cap of a product. This code tells us everything about the product and allows us to see if it’s a real product, a forgery or a so-called gray product, the origin of which is not immediately obvious. You can imagine that counterfeit drugs are dangerous and can even be lethal. More than enough reason for the creation of the Anti-Counterfeiting Trade Agreement, known as ACTA.

“We are using Dino-Lite to read and recognize the codes with our own software. With the Software Development Kit (SDK), supplied by Dino-Lite, we have adjusted our own software to work with Dino-Lite and all its features. On behalf of our clients we do worldwide research into product authenticity. Our people go in the field with a Dino-Lite, linked to a laptop where that runs our software. By ‘scanning’ the product, we can quickly determine

whether something is genuine or counterfeit. Based on our findings, the producer can then take action, as counterfeiting is still a criminal offense.”



At present this company uses approximately thirty Dino-Lites. But it is expected that this number will increase rapidly because of the ease of use and the modest size of the Dino-Lite.

“With Dino-Lite we can recognize product falsifications at a glance”

TELEDERMATOLOGY

TELEDERMATOLOGY WITH A DINO-LITE DERMASCOPE®

The Dutch health care institution Ksyos Tele Medical Center focuses on research, development and introduction of tele-consultation in the regular health care. Ksyos cooperates with over 3500 doctors and 2000 medical specialists and paramedics in tele-cardiology, tele-dermatology, tele- ophthalmology and tele-pulmonology.



Ksyos is offering the tele-dermatology service since early 2011. Physicians interested in using this service have the option of using a Dino-Lite digital dermascope, which is seen as a major incentive for starting tele-dermatology. Physicians currently using the Dino-Lite experience this equipment as versatile and

very easy to use. The direct link to the PC is generally seen as one of the most important features. A general practitioner can use a secure web application to send over dermatoscopic images to the dermatologist, including patient data and medical history.

Distance medicine with the Dino-Lite DermaScope®

Albert van der Velde is a general practitioner in Haarlem, The Netherlands and has more than 2,200 patients in his practice. He is an early adopter when it comes to technology and has been working with the Dino-Lite DermaScope for quite some time. "Much to my pleasure and that of my patients", says Van der Velde. "The DermaScope is compact and my patients can see on the screen what I see, which involves the patient in the diagnosis. The biggest advantage is of course the speed of working. I send my findings and photos to KSYOS (the teledermatology organisation) and I receive the results the next day. There is a negative and a positive to this. If the result is positive, you can reassure the patient immediately by phone, but if there is something suspicious, the patient will visit the dermatologist the next day instead of having to wait in suspense for several weeks. So either way it is better for the patient."



Increasing expertise

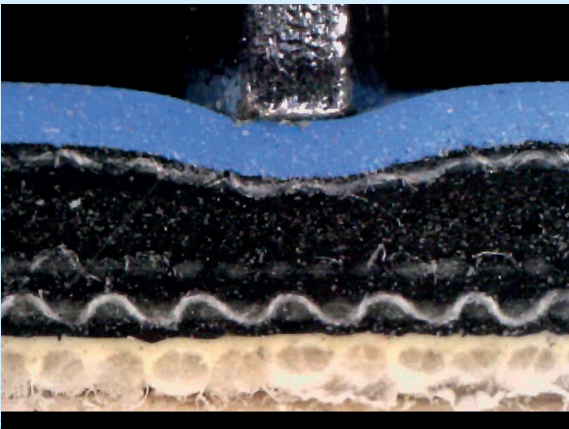
Using the DermaScope does take some getting used to. Van der Velde: "Yes, I had to find a medium between skin and scope and have found water to work best. You need to maneuver the Dino-Lite to achieve optimal viewing, but you get the hang of it quite soon". For Van der Velde using the Dino-Lite DermaScope also means that he increases his expertise. "I have no ambition to be a dermatologist, but by seeing the images and getting the results back very soon, you learn something every time. You can say that the DermaScope has high added value, and most of all this benefits the patient."

user story

RESEARCHING GRAPHICAL QUALITY

Researching graphical quality at the Print Technology Division of the Warsaw University of Technology.

The Print Technology Division of the Warsaw University of Technology in Poland is using four types of Dino-Lite digital microscopes to analyse the quality of printed images and photographs. This research includes zooming in on microscopic changes in paper and card stock during the printing process. In addition, the university's researchers use the digital microscopes to monitor the various stages of book-binding. These include cutting, folding and testing the physical endurance of bound books.



Dr. Georgij Petriaszwili, professor at the Print Technology Division, says, “Dino-Lite provides excellent image analysis quality for a fair price. Until recently we were using other microscope brands. They were expensive and didn’t always meet our needs. I first learned about the quality of Dino-Lite during a visit to the Arteveldehogeschool [Artevelde University College] in Ghent, Belgium. When I returned home to Poland, I started reading more about the options and the diverse models of Dino-Lite digital microscopes. I was pleasantly surprised. What’s



really important for us is that, in spite of the differences between Dino-Lite microscopes, the performance and support software form a well-coordinated package. We’re definitely keeping track

of any new developments from Dino-Lite. I expect that we’ll be using the WiFi features in the near future to process greater numbers of images online.”

The Print Technology Division of the Warsaw University of Technology trains specialists in analysing the image quality of graphical products. The division cooperates closely with graphics companies and printers throughout Poland. By 2018, the division will have been in existence for fifty years. Thus far, the division has trained over two thousand scientific professionals in the field of graphics arts.



“A well-coordinated package”

model overview



universal – high magnification

MODEL	RESOLUTION	MAGNIFICATION	CONNECTIVITY	LONG WORKING DISTANCE	MEASUREMENT & CALIBRATION	NUMBER OF LEDS	EXCHANGABLE CAPS	POLARIZER	METAL HOUSING	ESD-SAFE	GENERATION	ADDITIONAL FEATURES	PRICE RANGE
UNIVERSAL													
AM4113T	1,3 Megapixel	10 - 70x, 200x	USB 2.0	-	✓	8	-	-	-	-	-	-	€ 200 - 300
AM4013MT	1,3 Megapixel	10 - 70x, 200x	USB 2.0	-	✓	8	-	-	✓	✓	-	-	€ 400 - 500
AM4113ZT	1,3 Megapixel	10 - 70x, 200x	USB 2.0	-	✓	8	-	✓	-	-	-	-	€ 300 - 400
AM4013MZT	1,3 Megapixel	10 - 70x, 200x	USB 2.0	-	✓	8	-	✓	✓	✓	-	-	€ 400 - 500
AM4115T	1,3 Megapixel	20 - 220x	USB 2.0	-	✓	8	✓	-	-	-	Edge	-	€ 400 - 500
AM4115ZT	1,3 Megapixel	20 - 220x	USB 2.0	-	✓	8	✓	✓	-	-	Edge	-	€ 500 - 600
AM4115TW	1,3 Megapixel	10 - 50x	USB 2.0	-	✓	8	✓	-	-	-	Edge	MACRO ZOOM	€ 400 - 500
AM4115ZTW	1,3 Megapixel	10 - 50x	USB 2.0	-	✓	8	✓	✓	-	-	Edge	MACRO ZOOM	€ 500 - 600
AM4515T	1,3 Megapixel	20 - 220x	USB 2.0	-	✓	8	✓	-	-	-	Edge	AMR	€ 400 - 500
AM4515ZT	1,3 Megapixel	20 - 220x	USB 2.0	-	✓	8	✓	✓	-	-	Edge	AMR	€ 500 - 600
AM4815T	1,3 Megapixel	20 - 220x	USB 2.0	-	✓	8	✓	-	-	-	Edge	EDOF/EDR	€ 600 - 700
AM4815ZT	1,3 Megapixel	20 - 220x	USB 2.0	-	✓	8	✓	✓	-	-	Edge	EDOF/EDR	€ 700 - 800
AM7013MT	5 Megapixel	10 - 70x, 200x	USB 2.0	-	✓	8	-	-	✓	✓	-	-	€ 500 - 600
AM7013MZT	5 Megapixel	10 - 70x, 200x	USB 2.0	-	✓	8	-	✓	✓	✓	-	-	€ 600 - 700
AM7115MZT	5 Megapixel	20 - 220x	USB 2.0	-	✓	8	✓	✓	✓	✓	Edge	FLC	€ 700 - 800
AM7115MZTW	5 Megapixel	10 - 50x	USB 2.0	-	✓	8	✓	✓	✓	✓	Edge	MACRO ZOOM /FLC	€ 800 - 900
AM7515MZT	5 Megapixel	20 - 220x	USB 2.0	-	✓	8	✓	✓	✓	✓	Edge	AMR/FLC	€ 800 - 900
AM7915MZT	5 Megapixel	10 - 220x	USB 2.0	-	✓	8	✓	✓	✓	✓	Edge	AMR/EDOF/EDR/FLC	€ 900 - 1000
AM7515MT2A	5 Megapixel	130 - 220x	USB 2.0	-	✓	9	✓	-	✓	✓	Edge	AMR/FLC/Coaxial	€ 900 - 1000
MODEL	RESOLUTION	MAGNIFICATION	CONNECTIVITY	LONG WORKING DISTANCE	MEASUREMENT & CALIBRATION	NUMBER OF LEDS	EXCHANGABLE CAPS	POLARIZER	METAL HOUSING	ESD-SAFE	GENERATION	ADDITIONAL FEATURES	PRICE RANGE
HIGH MAGNIFICATION													
AM4113ZT4	1,3 Megapixel	400 - 470x	USB 2.0	-	✓	8	-	✓	-	-	-	-	€ 300 - 400
AM4013MZT4	1,3 Megapixel	400 - 470x	USB 2.0	-	✓	8	-	✓	✓	✓	-	-	€ 500 - 600
AM7013MZT4	5 Megapixel	400 - 470x	USB 2.0	-	✓	8	-	✓	✓	✓	-	-	€ 600 - 700
AM4113T5	1,3 Megapixel	500x	USB 2.0	-	✓	8	-	-	-	-	-	-	€ 300 - 400
AM4013MT5	1,3 Megapixel	500x	USB 2.0	-	✓	8	-	-	✓	✓	-	-	€ 400 - 500
AM4515ZT4	1,3 Megapixel	400 - 470x	USB 2.0	-	✓	8	✓	✓	-	-	Edge	AMR	€ 500 - 600
AM4515T5	1,3 Megapixel	500 - 550x	USB 2.0	-	✓	8	✓	-	-	-	Edge	AMR	€ 500 - 600
AM4515T8	1,3 Megapixel	700 - 900x	USB 2.0	-	✓	8	✓	-	-	-	Edge	AMR	€ 600 - 700
AM7515MT4A	5 Megapixel	415 - 470x	USB 2.0	-	✓	9	✓	-	✓	✓	Edge	AMR/FLC/Coaxial	€ 900 - 1000
AM7515MT8A	5 Megapixel	700 - 900x	USB 2.0	-	✓	9	✓	-	✓	✓	Edge	AMR/FLC/Coaxial	€ 900 - 1000

long working distance (lwd)

MODEL	RESOLUTION	MAGNIFICATION	CONNECTIVITY	LONG WORKING DISTANCE	MEASUREMENT & CALIBRATION	NUMBER OF LEDS	EXCHANGABLE CAPS	POLARIZER	METAL HOUSING	ESD-SAFE	GENERATION	ADDITIONAL FEATURES	PRICE RANGE
LONG WORKING DISTANCE (LWD)													
AM4113TL	1,3 Megapixel	10-90x	USB 2.0	✓	✓	8	-	-	-	-	-	-	€ 300 - 400
AM4013MTL	1,3 Megapixel	10-90x	USB 2.0	✓	✓	8	-	-	✓	✓	-	-	€ 400 - 500
AM4113TL-M40	1,3 Megapixel	5-40x	USB 2.0	✓	✓	8	-	-	-	-	-	MACRO ZOOM	€ 300 - 400
AM4113ZTL	1,3 Megapixel	10-90x	USB 2.0	✓	✓	8	-	✓	-	-	-	-	€ 300 - 400
AM4013MZTL	1,3 Megapixel	10-90x	USB 2.0	✓	✓	8	-	✓	✓	✓	-	-	€ 500 - 600
AD4113ZTL	1,3 Megapixel	20-90x	USB 2.0	✓	✓	8	✓	✓	-	-	-	-	€ 400 - 500
AD4013MZTL	1,3 Megapixel	20-90x	USB 2.0	✓	✓	8	✓	✓	✓	✓	-	-	€ 500 - 600
AM4115TL	1,3 Megapixel	10-140x	USB 2.0	✓	✓	8	✓	-	-	-	Edge	-	€ 400 - 500
AM4115ZTL	1,3 Megapixel	10-140x	USB 2.0	✓	✓	8	✓	✓	-	-	Edge	-	€ 500 - 600
AM4515ZTL	1,3 Megapixel	10-140x	USB 2.0	✓	✓	8	✓	✓	-	-	Edge	AMR	€ 500 - 600
AM4815ZTL	1,3 Megapixel	10-140x	USB 2.0	✓	✓	8	✓	✓	-	-	Edge	EDOF/EDR	€ 700 - 800
AM4115TF	1,3 Megapixel	10-70x	USB 2.0	✓	✓	8	✓	-	-	-	Edge	ELWD	€ 500 - 600
AD7013MTL	5 Megapixel	20-90x	USB 2.0	✓	✓	8	✓	-	✓	✓	-	-	€ 600 - 700
AM7115MZTL	5 Megapixel	10-140x	USB 2.0	✓	✓	8	✓	✓	✓	✓	Edge	FLC	€ 700 - 800
AM7515MZTL	5 Megapixel	10-140x	USB 2.0	✓	✓	8	✓	✓	✓	✓	Edge	AMR/FLC	€ 800 - 900
AM7915MZTL	5 Megapixel	10-140x	USB 2.0	✓	✓	8	✓	✓	✓	✓	Edge	AMR/EDOF/EDR/FLC	€ 900 - 1000
AM7115MTF	5 Megapixel	10-70x	USB 2.0	✓	✓	8	✓	-	✓	✓	Edge	ELWD/FLC	€ 700 - 800

special lighting

MODEL	RESOLUTION	MAGNIFICATION	CONNECTIVITY	LONG WORKING DISTANCE	MEASUREMENT & CALIBRATION	NUMBER OF LEDS	TYPE OF LEDS	EMISSION FILTER	EXCHANGABLE CAPS	POLARIZER	METAL HOUSING	ESD-SAFE	GENERATION	PRICE RANGE
SPECIAL LIGHTING ULTRAVIOLET														
AM4113FVT2	1,3 Megapixel	10 - 70x, 200x	USB 2.0	-	✓	4	~375 nm UV	✓	-	-	-	-	-	€ 200 - 300
AM4113FVT	1,3 Megapixel	10 - 70x, 200x	USB 2.0	-	✓	8	390/400 nm UV	✓	-	-	-	-	-	€ 200 - 300
AM4115-FUT	1,3 Megapixel	20 - 220x	USB 2.0	-	✓	4	~375 nm UV	✓	✓	-	-	-	Edge	€ 400 - 500
AM4115-FVT	1,3 Megapixel	20 - 220x	USB 2.0	-	✓	8	390/400 nm UV	✓	✓	-	-	-	Edge	€ 400 - 500
AM4113T-FV2W	1,3 Megapixel	10 - 70x, 200x	USB 2.0	-	✓	4+4	375 nm UV + white	✓	-	-	-	-	-	€ 300 - 400
AM4113T-FVW	1,3 Megapixel	10 - 70x, 200x	USB 2.0	-	✓	4+4	390/400 nm UV + white	✓	-	-	-	-	-	€ 300 - 400
AM4013MT-FVW	1,3 Megapixel	10 - 70x, 200x	USB 2.0	-	✓	4+4	390/400 nm UV + white	✓	-	-	✓	✓	-	€ 400 - 500
AM4113T-VW	1,3 Megapixel	10 - 70x, 200x	USB 2.0	-	✓	4+4	390/400 nm UV + white	-	-	-	-	-	-	€ 300 - 400
AM4013MT-VW	1,3 Megapixel	10 - 70x, 200x	USB 2.0	-	✓	4+4	390/400 nm UV + white	-	-	-	✓	✓	-	€ 400 - 500
AM4113TL-FVW	1,3 Megapixel	10 - 90x	USB 2.0	✓	✓	4+4	390/400 nm UV + white	✓	-	-	-	-	-	€ 300 - 400
AM4013MTL-FVW	1,3 Megapixel	10 - 90x	USB 2.0	✓	✓	4+4	390/400 nm UV + white	✓	-	-	✓	✓	-	€ 500 - 600
AM4115T-FUW	1,3 Megapixel	20 - 220x	USB 2.0	-	✓	4+4	375 nm UV + white	✓	✓	-	-	-	Edge	€ 500 - 600
AM4115T-FVW	1,3 Megapixel	20 - 220x	USB 2.0	-	✓	4+4	390/400 nm UV + white	✓	✓	-	-	-	Edge	€ 500 - 600
AM4115TL-FVW	1,3 Megapixel	10 - 140x	USB 2.0	✓	✓	4+4	390/400 nm UV + white	✓	✓	-	-	-	Edge	€ 500 - 600
AM7115MT-FUW	5 Megapixel	20 - 220x	USB 2.0	-	✓	4+4	375 nm UV + white	✓	✓	-	✓	✓	Edge	€ 700 - 800
SPECIAL LIGHTING INFRARED														
AM4115-FKT	1,3 Megapixel	20-220x	USB 2.0	-	✓	8	780 nm IR	✓	✓	-	-	-	Edge	€ 500 - 600
AM4115-FIT	1,3 Megapixel	20-220x	USB 2.0	-	✓	8	850 nm IR	✓	✓	-	-	-	Edge	€ 400 - 500
AM4115-FJT	1,3 Megapixel	20-220x	USB 2.0	-	✓	8	940 nm IR	✓	✓	-	-	-	Edge	€ 400 - 500
AD4113T-I2V	1,3 Megapixel	20-200x	USB 2.0	-	✓	4+4	390/400 nm UV + 940 nm IR	✓	✓	-	-	-	-	€ 300 - 400
AM4115T-JV	1,3 Megapixel	20-220x	USB 2.0	-	✓	4+4	390/400 nm UV + 940 nm IR	✓	✓	-	-	-	Edge	€ 500 - 600
AM7013M-FIT	5 Megapixel	10-70x, 200x	USB 2.0	-	✓	8	850 nm IR	✓	-	-	✓	✓	-	€ 500 - 600
AD7013MTL-FI2	5 Megapixel	20-90x	USB 2.0	✓	✓	8	940 nm IR	✓	✓	-	✓	✓	-	€ 600 - 700

special lighting

MODEL	RESOLUTION	MAGNIFICATION	CONNECTIVITY	LONG WORKING DISTANCE	MEASUREMENT & CALIBRATION	NUMBER OF LEDS	EXCITATION WAVELENGTH	EMISSION WAVELENGTH	FLUOROPHORE (EXAMPLE)	EXCHANGABLE CAPS	POLARIZER	METAL HOUSING	ESD-SAFE	GENERATION	ADDITIONAL FEATURES	PRICE RANGE
SPECIAL LIGHTING FLUORESCENCE																
AM4115T-CFVW	1,3 Megapixel	20 - 220x	USB 2.0	-	✓	7 FL + 1 White	EX: 400 nm + white	EM: 430 nm LP	DAPI	✓	-	-	-	Edge		€ 600 - 700
AM4115T-GFBW	1,3 Megapixel	20 - 220x	USB 2.0	-	✓	7 FL + 1 White	EX: 480 nm + white	EM: 510 nm LP	GFP, FITC	✓	-	-	-	Edge		€ 600 - 700
AM4115T-YFGW	1,3 Megapixel	20 - 220x	USB 2.0	-	✓	7 FL + 1 White	EX: 525 nm + white	EM: 570 nm LP	Cy3, TRITC	✓	-	-	-	Edge		€ 600 - 700
AM4115T-RFYW	1,3 Megapixel	20 - 220x	USB 2.0	-	✓	7 FL + 1 White	EX: 575 nm + white	EM: 610 nm LP	TxRed, mCherry	✓	-	-	-	Edge		€ 600 - 700
AM4115T-DFRW	1,3 Megapixel	20 - 220x	USB 2.0	-	✓	7 FL + 1 White	EX: 620 nm + white	EM: 650 nm LP	Cy5	✓	-	-	-	Edge		€ 600 - 700
AM4115T-GRFBY	1,3 Megapixel	20 - 220x	USB 2.0	-	✓	4 FL + 4 FL	EX: 480 nm + 575 nm	EM: 510 nm & 610 nm	GFP/FITC & TxRed/mCherry	✓	-	-	-	Edge		€ 700 - 800
AM4515T4-GFBW	1,3 Megapixel	400 - 470x	USB 2.0	-	✓	7 FL + 1 White	EX: 480 nm + white	EM: 510 nm LP	GFP, FITC	✓	-	-	-	Edge	AMR	€ 600 - 700

MODEL	RESOLUTION	MAGNIFICATION	CONNECTIVITY	LONG WORKING DISTANCE	MEASUREMENT & CALIBRATION	NUMBER OF LEDS	TYPE OF LEDS	FPS	EXCHANGABLE CAPS	POLARIZER	METAL HOUSING	ESD-SAFE	GENERATION	ADDITIONAL FEATURES	PRICE RANGE
SPECIAL LIGHTING STROBOSCOPE															
AM3713TB	VGA (640x480)	10 - 70x, 200x	USB 2.0	-	✓	8	white (stroboscopic)	60 fps	-	-	-	-	-	-	€ 300 - 400
AM3715TB	VGA (640x480)	20 - 220x	USB 2.0	-	✓	8	white (stroboscopic)	30 fps	✓	-	-	-	Edge	external trigger	€ 400 - 500

high speed connection

MODEL	RESOLUTION	MAGNIFICATION	CONNECTIVITY	LONG WORKING DISTANCE	MEASUREMENT & CALIBRATION	NUMBER OF LEDS	MAX. FPS*	EXCHANGEABLE CAPS	POLARIZER	METAL HOUSING	ESD-SAFE	GENERATION	ADDITIONAL FEATURES	PRICE RANGE
HIGH SPEED USB 3.0 CONNECTION														
AM73115MZT	5 Megapixel	20-220x	USB 3.0	-	✓	8	45 fps	✓	✓	✓	✓	Edge	FLC	€ 900-1000
AM73115MZTL	5 Megapixel	10-140x	USB 3.0	✓	✓	8	45 fps	✓	✓	✓	✓	Edge	FLC	€ 900-1000
AM73115MTF	5 Megapixel	10-70x	USB 3.0	✓	✓	8	45 fps	✓	-	✓	✓	Edge	ELWD/FLC	€ 900-1000
AM73515MZT	5 Megapixel	20-220x	USB 3.0	-	✓	8	45 fps	✓	✓	✓	✓	Edge	AMR/FLC	€ 900-1000
AM73515MZTL	5 Megapixel	10-140x	USB 3.0	✓	✓	8	45 fps	✓	✓	✓	✓	Edge	AMR/FLC	€ 900-1000
AM73915MZT	5 Megapixel	20-220x	USB 3.0	-	✓	8	45 fps	✓	✓	✓	✓	Edge	EDOF/EDR/AMR/FLC	€ 1100-1200
AM73915MZTL	5 Megapixel	10-140x	USB 3.0	✓	✓	8	45 fps	✓	✓	✓	✓	Edge	EDOF/EDR/AMR/FLC	€ 1100-1200

MODEL	RESOLUTION	MAGNIFICATION	CONNECTIVITY	LONG WORKING DISTANCE	MEASUREMENT & CALIBRATION	NUMBER OF LEDS	MAX. FPS*	EXCHANGEABLE CAPS	POLARIZER	METAL HOUSING	ESD-SAFE	GENERATION	ADDITIONAL FEATURES	PRICE RANGE
HIGH-SPEED VGA CONNECTION														
AM4116T	800x600	10-70x, 200x	VGA (D-Sub)	-	-	8	60 fps	-	-	-	-	-	-	€ 200-300
AM4116TL	800x600	10-90x	VGA (D-Sub)	✓	-	8	60 fps	-	-	-	-	-	-	€ 200-300
AM4116ZT	800x600	10-70x, 200x	VGA (D-Sub)	-	-	8	60 fps	-	✓	-	-	-	-	€ 300-400
AM4116ZTL	800x600	10-90x	VGA (D-Sub)	✓	-	8	60 fps	-	✓	-	-	-	-	€ 300-400
AM5116T	720P	10-70x, 200x	VGA (D-Sub)	-	-	8	60 fps	-	-	-	-	-	Freeze Frame Function	€ 300-400
AM5116ZT	720P	10-70x, 200x	VGA (D-Sub)	-	-	8	60 fps	-	✓	-	-	-	Freeze Frame Function	€ 400-500
AM5116ZTL	720P	10-90x	VGA (D-Sub)	✓	-	8	60 fps	-	✓	-	-	-	Freeze Frame Function	€ 400-500
AM5216T	720P	20-220x	VGA (D-Sub)	-	-	8	60 fps	-	-	-	-	Edge	Freeze Frame Function	€ 400-500
AM5216ZT	720P	20-220x	VGA (D-Sub)	-	-	8	60 fps	✓	✓	-	-	Edge	Freeze Frame Function	€ 500-600
AM5216ZTL	720P	10-140x	VGA (D-Sub)	✓	-	8	60 fps	✓	✓	-	-	Edge	Freeze Frame Function	€ 500-600
AM5216TF	720P	10-70x	VGA (D-Sub)	✓	-	8	60 fps	✓	-	-	-	Edge	Freeze Frame Function/ELWD	€ 500-600

MODEL	RESOLUTION	MAGNIFICATION	CONNECTIVITY	LONG WORKING DISTANCE	MEASUREMENT & CALIBRATION	NUMBER OF LEDS	MAX. FPS*	EXCHANGEABLE CAPS	POLARIZER	METAL HOUSING	ESD-SAFE	GENERATION	ADDITIONAL FEATURES	PRICE RANGE
HIGH-SPEED DVI CONNECTION														
AM5018MZT	HD 720p	10-70x, 200x	High Definition (DVI)	-	-	8	60 fps	-	✓	✓	✓	-	Freeze Frame Function	€ 600-700
AM5018MZTL	HD 720p	20-90x	High Definition (DVI)	✓	-	8	60 fps	-	✓	✓	✓	-	Freeze Frame Function	€ 600-700
AM5218MZT	HD 720p	20-220x	High Definition (DVI)	-	-	8	60 fps	✓	✓	✓	✓	Edge	Freeze Frame Function	€ 700-800
AM5218MZTL	HD 720p	10-140x	High Definition (DVI)	✓	-	8	60 fps	✓	✓	✓	✓	Edge	Freeze Frame Function	€ 700-800

basic - eyepiece camera's

MODEL	RESOLUTION	MAGNIFICATION	CONNECTIVITY	LONG WORKING DISTANCE	MEASUREMENT & CALIBRATION	NUMBER OF LEDS	EXCHANGABLE CAPS	POLARIZER	METAL HOUSING	ESD-SAFE	GENERATION	ADDITIONAL FEATURES	PRICE RANGE
BASIC													
AM2111	VGA (640x480)	10 - 70x, 200x	USB 2.0	-	-	4	-	-	-	-	-	-	€ 100 - 200
AM3113T	VGA (640x480)	10 - 70x, 200x	USB 2.0	-	✓	8	-	-	-	-	-	-	€ 100 - 200

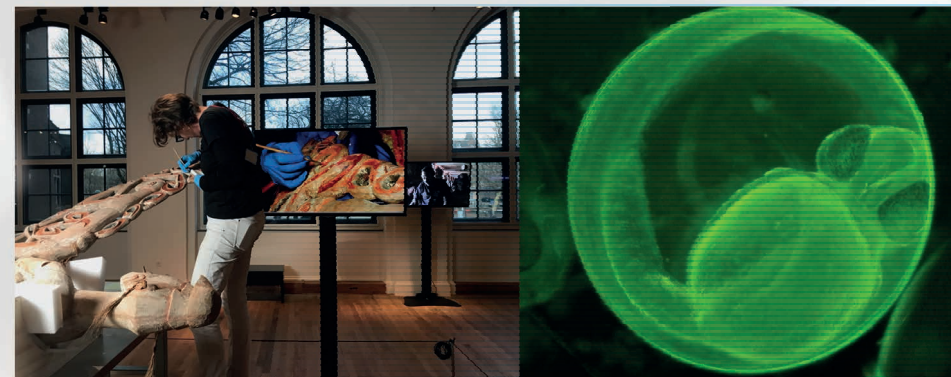
MODEL	RESOLUTION	BUILT-IN MAGNIFICATION	CONNECTIVITY	MEASUREMENT & CALIBRATION	MOUNTING TYPE	OCULAR TUBE DIAMETER	GENERATION	ADDITIONAL FEATURES	PRICE RANGE
EYEPIECE CAMERA'S									
AM4023	1,3 Megapixel	✓	USB 2.0	✓	inside ocular tube	23 mm	-	-	€ 100 - 200
AM4023X	1,3 Megapixel	✓	USB 2.0	✓	inside ocular tube	23,30 & 30,5 mm	-	-	€ 200 - 300
AM4023U	1,3 Megapixel	✓	USB 2.0	✓	over ocular	up to 36 mm	-	-	€ 200 - 300
AM4025X	1,3 Megapixel	✓	USB 2.0	✓	inside ocular tube & c-mount	23,30 & 30,5 mm	Edge	manual EDOF	€ 300 - 400
AM7025X	5 Megapixel	✓	USB 2.0	✓	inside ocular tube & c-mount	23,30 & 30,5 mm	Edge	manual EDOF	€ 400 - 500



Dino-Lite

Digital Microscope

The Industry Standard



Version 2019/Q3 © Dino-Lite Europe/ IDCP B.V. Unauthorized use and/or duplication of this material without express and written permission from us is strictly prohibited.

Dino-Lite Europe is the importer and master distributor for the Dino-Lite products for Europe, Africa and the Middle East. Dino-Lite products are sold by hundreds of local partners, please check www.dino-lite.eu/wheretobuy for the best reseller in your region.



Characterisation,
Measurement &
Analysis

Lambda Photometrics Limited

Lambda House Batford Mill
Harpenden Herts AL5 5BZ
United Kingdom
E: info@lambdaphoto.co.uk
W: www.lambdaphoto.co.uk
T: +44 (0)1582 764334
F: +44 (0)1582 712084