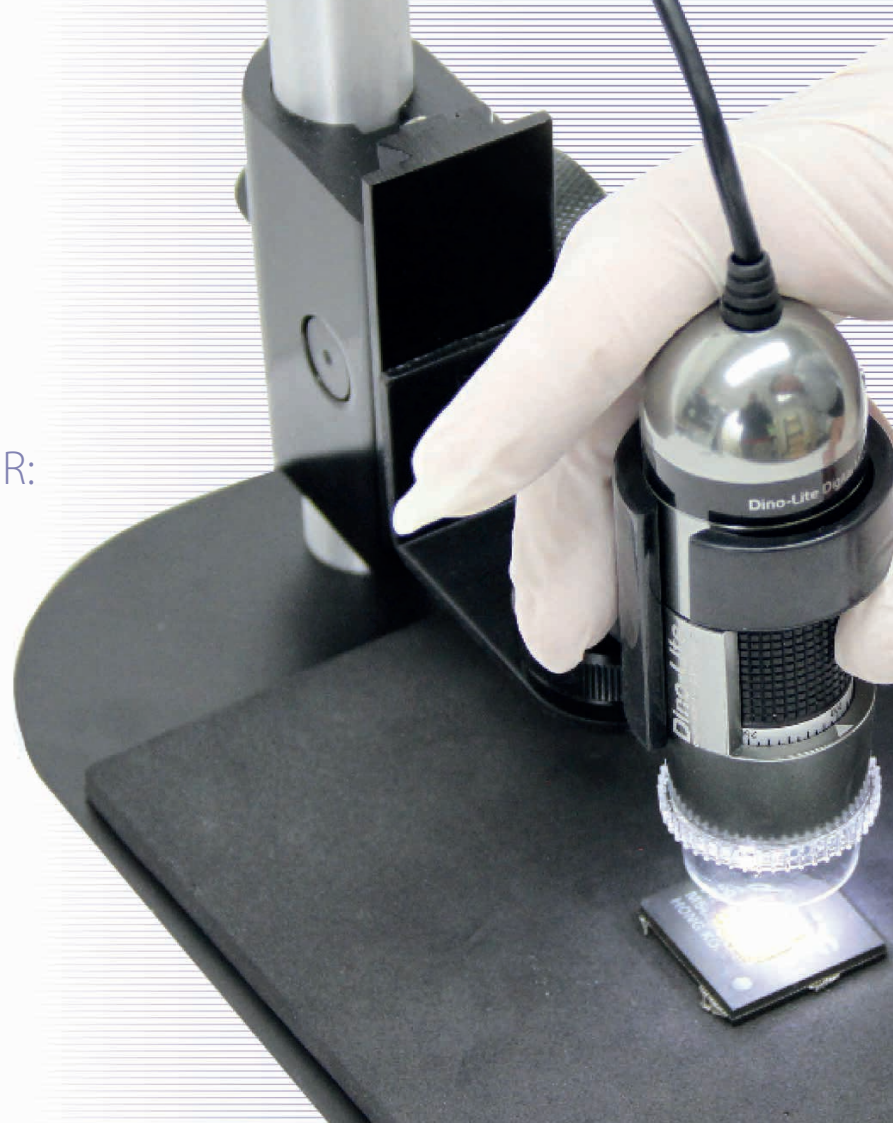


DINO-LITE  
ESD-SAFE PRODUCT RANGE FOR:  
THE ELECTRONICS  
INDUSTRY



## A FULL RANGE OF ESD SAFE DIGITAL MICROSCOPES

Dino-Lite offers a full range of Electrostatic Discharge (ESD) safe digital microscopes and accessories, specifically designed with the needs of the electronics industry in mind. The robust aluminum housing of the ESD-safe microscope models generates no significant static. The special ESD-safe stands are finished with a specially formulated, ESD-safe coating, developed for environments involving sensitive electronic circuits. This makes the Dino-Lite a safe and essential tool for anyone in the electronics industry, for inspection, quality control, rework/repair or precision assembly tasks.

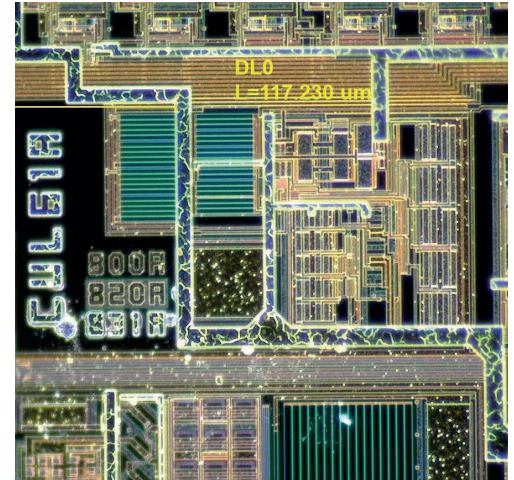
---

DINO-LITE OFFERS A FULL RANGE OF ESD-SAFE  
DIGITAL MICROSCOPES AND ACCESSORIES,  
SPECIFICALLY DESIGNED WITH THE NEEDS  
OF THE ELECTRONICS INDUSTRY IN MIND

---

## APPLICATIONS

- > Solder Inspection
- > Component Inspection
- > Failure Analysis
- > Quality Control
- > Counterfeit Component Detection
- > BGA Inspection Assembly



## FEATURES

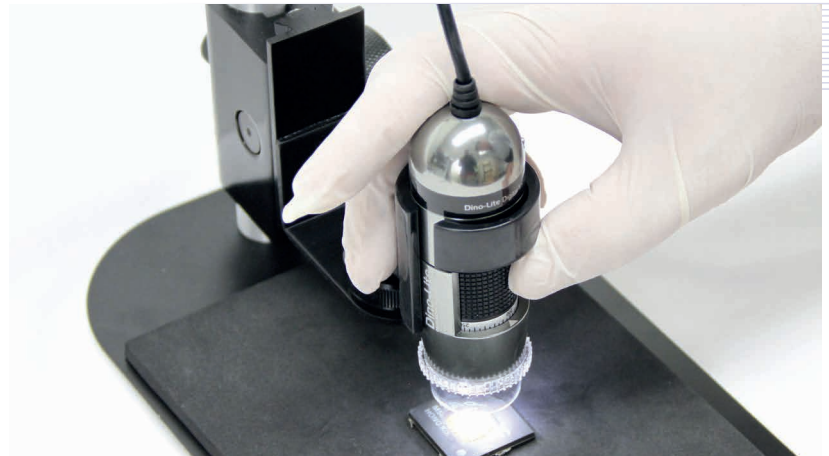
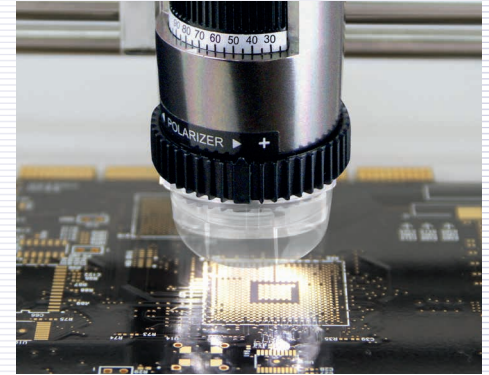
All USB Dino-Lite models come with a professional, multilingual software suite, both for Windows and MacOS. With the software, images and videos can be captured, or shared live over the internet, which makes it very simple to cooperate with colleagues, customers or suppliers all over the world. The integrated measurement functionality with calibration option allows for accurate measurements of all sorts (line, circle, angles, polygons, etc.). The integrated, fully adjustable polarizer reduces reflections and glare resulting in crystal clear high quality images.

---

THE POLARIZER REDUCES  
THE REFLECTIONS OF THE LEDs,  
RESULTING IN CRYSTAL CLEAR  
HIGH QUALITY IMAGES

---

Several models offer a long working distance which makes working under the microscope possible. The Micro-Touch snapshot function allows for easy taking of pictures, simply by touching the sensor on the microscope. For situations where image capturing is not required, but real-time images are vital, the Dino-Lite DVI models or USB 3.0 models are the right choice. They offer a very high frame rate (up to 60 fps) and crystal clear images.



# DINO-LITE HIGH SPEED

More info: [www.dino-lite.eu/highspeed](http://www.dino-lite.eu/highspeed)

## AM5018MZT

The main features of the AM5018MZT are:

HD 720P | High Definition connection (DVI) up to 60fps | 10-70x & 200x magnification | Adjustable integrated polarizer | 8 white switchable white LEDs | Metal housing.



**HD** HD 720 p

 DVI CONNECTOR

 ADJUSTABLE  
~10-70x & 200x

 POLARIZER  
ANTI-REFLECTION

 8 WHITE LEDs  
SWITCHABLE

 METAL  
HOUSING

## AM5018MZTL

The main features of the AM5018MZTL are:

HD 720P | High Definition connection (DVI) up to 60fps | 20-90x magnification | Long Working Distance (LWD) | Adjustable integrated polarizer | 8 white switchable white LEDs | Metal housing.



**HD** HD 720 p

 DVI CONNECTOR

 CONTINUOUS  
~20x-90x

 LONG WORKING  
DISTANCE  
4-15 cm

 POLARIZER  
ANTI-REFLECTION

 8 WHITE LEDs  
SWITCHABLE

 METAL  
HOUSING

## AM73115MZTL

The main features of the AM73115MZTL are:

5 Megapixel sensor | USB 3.0 connection with up to 45fps | 10-140x magnification | Adjustable integrated polarizer | 8 white switchable white LEDs | Metal housing | Flexible LED Control (FLC) | Extensive measurement functionality | Calibrated measurements | Exchangeable caps.



Also available AM73115MZT  
standard working distance, 20-220x Magnification



5 MEGAPIXEL  
2592 x 1944



USB 3.0



CONTINUOUS  
~10x-140x



POLARIZER  
ANTI-REFLECTION



8 WHITE LEDs  
SWITCHABLE



METAL  
HOUSING



FLEXIBLE  
LED CONTROL



MEASUREMENT  
FUNCTIONALITY



EXCHANGEABLE  
CAP

## AM73915MZTL

The main features of the AM73915MZTL are:

5 Megapixel sensor | USB 3.0 connection with up to 45fps | 10-140x magnification | Adjustable integrated polarizer | 8 white switchable white LEDs | Metal housing | Flexible LED Control (FLC) | Extended Depth of Field (EDOF) | Extended Dynamic Range (EDR) | Automatic Magnification Reading (AMR) | Extensive measurement functionality | Calibrated measurements | Exchangeable caps.



Also available AM73915MZT  
standard working distance, 20-220x Magnification



5 MEGAPIXEL  
2592 x 1944



USB 3.0



CONTINUOUS  
~10x-140x



POLARIZER  
ANTI-REFLECTION



8 WHITE LEDs  
SWITCHABLE



METAL  
HOUSING



FLEXIBLE  
LED CONTROL



EXTENDED  
DEPTH OF FIELD



EXTENDED  
DYNAMIC RANGE



AUTOMATIC  
MAGNIFICATION  
READING



MEASUREMENT  
FUNCTIONALITY



EXCHANGEABLE  
CAP



# DINO-LITE UNIVERSAL

More info: [www.dino-lite.eu/universal](http://www.dino-lite.eu/universal)

## AM4013MZT

The main features of the AM4013MZT are:

1.3 Megapixel sensor | USB 2.0 connection | 10-70x & 200x magnification | Adjustable integrated polarizer | 8 white switchable white LEDs | Metal housing | Extensive measurement functionality | Calibrated measurements.



1.3 MEGAPIXEL  
1280 x 1024



USB 2.0



ADJUSTABLE  
~10-70x & 200x



POLARIZER  
ANTI-REFLECTION



8 WHITE LEDs  
SWITCHABLE



METAL  
HOUSING



MEASUREMENT  
FUNCTIONALITY

# DINO-LITE LONG WORKING DISTANCE

More info: [www.dino-lite.eu/longworkingdistance](http://www.dino-lite.eu/longworkingdistance)

## AM4013MZTL

The main features of the AM4013MZTL are:

1.3 Megapixel sensor | USB 2.0 connection | 10-90x magnification-Long Working Distance (LWD) | Adjustable integrated polarizer | 8 white switchable white LEDs | Metal housing, Extensive measurement functionality | Calibrated measurements.



1.3 MEGAPIXEL  
1280 x 1024



USB 2.0



CONTINUOUS  
~10x-90x



LONG WORKING  
DISTANCE  
4-15 cm



POLARIZER  
ANTI-REFLECTION



8 WHITE LEDs  
SWITCHABLE



METAL  
HOUSING



MEASUREMENT  
FUNCTIONALITY

# DINO-LITE LONG WORKING DISTANCE

More info: [www.dino-lite.eu/longworkingdistance](http://www.dino-lite.eu/longworkingdistance)

## AM7115MZTL

The main features of the AM7115MZTL are:

5 Megapixel sensor | USB 2.0 connection | 10-140x magnification  
Long Working Distance (LWD) | Adjustable integrated polarizer  
8 white switchable white LEDs | Metal housing | Flexible LED Control  
(FLC) | Extensive measurement functionality | Calibrated measurements | Exchangeable caps.



Also available AM7115MZT  
standard working distance, 20-220x Magnification



5 MEGAPIXEL  
2592 x 1944



USB 2.0



CONTINUOUS  
~10x-140x



LONG WORKING  
DISTANCE  
4-15 cm



POLARIZER  
ANTI-REFLECTION



8 WHITE LEDs  
SWITCHABLE



METAL  
HOUSING



FLEXIBLE  
LED CONTROL  
FLC



MEASUREMENT  
FUNCTIONALITY



EXCHANGEABLE  
CAP

## AM7915MZTL

The main features of the AM7915MZTL are:

5 Megapixel sensor | USB 2.0 connection | 10-140x magnification  
Long Working Distance (LWD) | Adjustable integrated polarizer  
8 white switchable white LEDs | Metal housing | Flexible LED Control  
(FLC) | Extended Depth of Field (EDOF) | Extended Dynamic Range  
(EDR) | Automatic Magnification Reading (AMR).



Also available AM7915MZT  
standard working distance, 20-220x Magnification



5 MEGAPIXEL  
2592 x 1944



USB 2.0



CONTINUOUS  
~10x-140x



LONG WORKING  
DISTANCE  
4-15 cm



POLARIZER  
ANTI-REFLECTION



8 WHITE LEDs  
SWITCHABLE



METAL  
HOUSING



FLEXIBLE  
LED CONTROL  
FLC



EXTENDED  
DEPTH OF FIELD  
EDOF



EXTENDED  
DYNAMIC RANGE  
EDR



AUTOMATIC  
MAGNIFICATION  
READING  
AMR

# DINO-LITE ACCESSORIES

More info: [www.dino-lite.eu/accessories](http://www.dino-lite.eu/accessories)



## RK-06-AE

The Dino-Lite RK-06-AE stand is a sturdy and stable mid-range stand solution that can be used with all Dino-Lite digital microscopes. It is constructed of stainless steel and lightweight aluminum and offers precise focus adjustment as well as a quick vertical release function.



## RK-10A

The Dino-Lite RK-10A stand is a sturdy and stable high-range stand solution that can be used with all Dino-Lite digital microscopes. It is constructed of stainless steel and lightweight aluminum and offers precise focus adjustment as well as a quick vertical release function.



## RK-10-FX

The RK-10-FX is an optional flexible arm extension for the RK-06-AE and the RK-10A stand.



## RK-10-PX

The RK-10-PX is a XY positioning arm with accurate and smooth adjustment options. It is a great add-on to the high precision RK-10A and the RK-06-AE stand.



## RK-10-EX

The RK-10-EX is an optional horizontal arm attachment for the RK-06-AE and the RK-10A stand.



## RK-10-VX

RK-10-VX is an optional vertical arm attachment for the RK-06-AE and the RK-10A stand.





## MS35BE STAND

Square metal base with ESD-safe coating with column and support providing several adaptable heights. The MS35BE comes with an ESD (electrostatic discharge) safe base plate instead of the standard MS35B base plate.



## MS36BE STAND

Square metal base with ESD-safe coating with column and support providing several adaptable heights. The MS36BE comes with an ESD (electrostatic discharge) safe base plate instead of the standard MS36B base plate. The MS36BE has a horizontal beam to enable additional flexibility in the horizontal plane.



## SW-F1

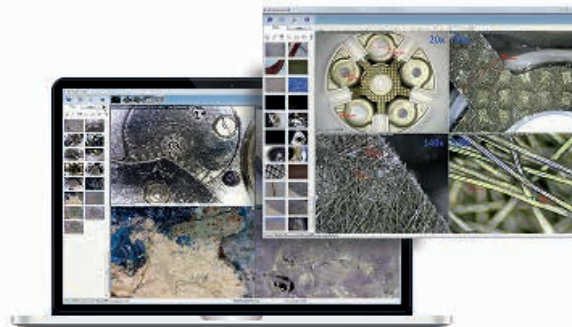
Foot pedal accessory allowing you to take a picture with your foot

# DINO-LITE SOFTWARE

More info: [www.dino-lite.eu/support/software](http://www.dino-lite.eu/support/software)

## ADVANCED SOFTWARE INCLUDED

A professional, reliable software environment is essential when working with computer accessories like a USB microscope. All Dino-Lite USB products are equipped with an in-house developed software suite. The Dino-Capture software is continuously developed, is free of charge for Dino-Lite users and has an automatic update feature. DinoCapture software is available for Windows and DinoXcope for Macintosh computers. DinoCapture software is intuitive, user-friendly and can be used without hardly any training. Free online & e-mail software support is available.



## LANGUAGES

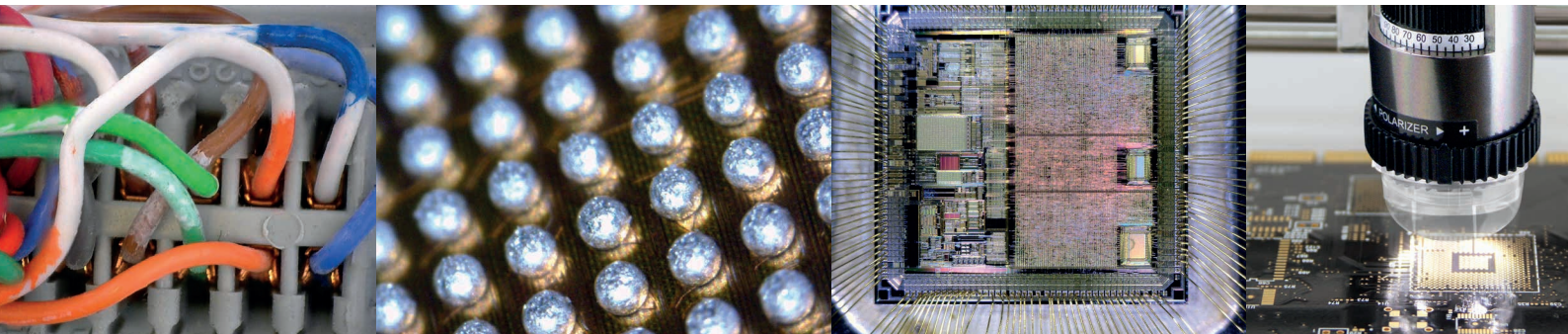
The DinoCapture 2.0 software is available in many languages, such as: English, German, French, Spanish, Chinese, Japanese, Portuguese, Italian, Russian, Dutch, Greek, Hungarian, Polish, Romanian, Swedish, Finnish, Danish, Czech, Croatian, Norwegian, Turkish.

## MAIN SOFTWARE FEATURES

---

- > Capturing photographs, videos or time-lapsed videos
  - > Saving pictures in several formats
  - > Advanced image processing
  - > Measurement options like: line, radius, circle, 3-point circle, angle, etc.
  - > Measurements on captured images or on live images
  - > Calibration options
  - > E-mail integration
  - > Adding notes and markings on images
  - > Skype integration for real-time on-line sharing with suppliers, customers or colleagues
  - > Connect multiple Dino-Lite microscopes
  - > Controlling lighting options from the software
  - > IP functionality for remote viewing of microscopic images
  - > Barcode/QR code recognition functionality
  - > GPS integration
-

MODEL	RESOLUTION	MAGNIFICATION	CONNECTION		LONG WORKING DISTANCE	MEASUREMENT & CALIBRATION	LED	EXCHANGEABLE CAPS	POLARIZER	METAL HOUSING	ESD - SAFE	GENERATION	ADDITIONAL FEATURES	PRICE RANGE	FPS
AM5018MZT	HD 720p	10-70x, 200x	High Definition (DVI)		N	N	8	N	Y	Y	Y		Freeze Frame Function	€ 600-700	60fps
AM5018MZTL	HD 720p	20-90x	High Definition (DVI)		Y	N	8	N	Y	Y	Y		Freeze Frame Function	€ 600-700	60fps
AM73115MZTL	5 MP	10-140x	USB 3.0		Y	Y	8	Y	Y	Y	Y	Edge	FLC	€ 900-1000	45fps
AM73915MZTL	5 MP	10-140x	USB 3.0		Y	Y	8	Y	Y	Y	Y	Edge	AMR/EDOF/EDR/FLC	€ 1100-1200	45fps
AM4013MZT	1,3 MP	10-70x, 200x	USB 2.0		N	Y	8	N	Y	Y	Y			€ 400-500	
AM4013MZTL	1,3 MP	10-90x	USB 2.0		Y	Y	8	N	Y	Y	Y			€ 500-600	
AM7115MZTL	5 MP	10-140x	USB 2.0		Y	Y	8	Y	Y	Y	Y	Edge	FLC	€ 700-800	
AM7915MZTL	5 MP	10-140x	USB 2.0		Y	Y	8	Y	Y	Y	Y	Edge	AMR/EDOF/EDR/FLC	€ 900-1000	
RK-06AE	Sturdy and stable mid-range stand		RK-10-EX	Horizontal arm			RK-10-VX		Vertical arm						
RK-10A	Sturdy and stable high-range stand		RK-10-FX	Flexible arm			RK-10-PX		Positioning arm						
MS35BE		Metal vertical desktop stand													
MS36BE		Metal vertical and horizontal desktop stand													
SW-F1		Foot pedal													
WF-10		WiFi streamer for Dino-Lite USB models + Battery													



## Dino-Lite

### Digital Microscope

**The Industry Standard**

Version 2019/Q3 © Dino-Lite Europe/ IDCP B.V. Unauthorized use and/or duplication of this material without express and written permission from us is strictly prohibited.

Dino-Lite Europe is the importer and master distributor for the Dino-Lite products for Europe, Africa and the Middle East. Dino-Lite products are sold by hundreds of local partners, please check [www.dino-lite.eu/wheretobuy](http://www.dino-lite.eu/wheretobuy) for the best reseller in your region.



**Lambda**

Characterisation,  
Measurement &  
Analysis

#### **Lambda Photometrics Limited**

Lambda House Batford Mill  
Harpenden Herts AL5 5BZ  
United Kingdom

E: [info@lambdaphoto.co.uk](mailto:info@lambdaphoto.co.uk)  
W: [www.lambdaphoto.co.uk](http://www.lambdaphoto.co.uk)  
T: +44 (0)1582 764334  
F: +44 (0)1582 712084